

Machine Serial Number Identification

1. Hindley Green Serial Number Identification.

It is important to obtain the complete serial number, before looking up CPN numbers in the parts manual. On current machines the serial number is located on the canopy, on the right or front side, depending on the model.

Should the data plate be missing, the serial number is also stamped into the truck frame and also on the tow bar of each unit.

From 1970 machine serial numbers have incorporated a system of a three digit product code after the serial number, which represents a model of compressor built by the Portable Division.

A complete tabulation of machine product codes are as illustrated on pages 48 to 50, of the Product Support Manual 2002.

Example of complete serial number:

412405 E 95 341

412405	Machine Serial Number
E, U	Manufacturing Location - E = Hindley Green, U = Mocksville
95	Year of Manufacture
341	Product Code

2. Czech Republic Serial Number Identification.

VIN (Vehicle Identification Number) coding

The VIN number consists of the following numbers of digits :

XXX	XXXXXX	X	X	XXXXXX
a)	b)	c)	d)	e)

- a) SCZ = WMI code for IR (3 digits)
- b) 731EFX = model, type (6 digits)
- c) 5 = year (2004 = 4, 2005 = 5, 2006 = 6, etc) (1 digit)
- d) Y = assembled in Europe (1 digit)
- e) 123456 = machine serial number (6 digit)

VIN example for compressor, assembled in year 2005, serial number 123456

SCZ731EFX5Y123456

3. USA Serial Number Identification.

a) Model Notations for Portable Compressors.

Below are listed the notations that you will come across on the Portable Compressors.

Prefixes: P — 100PSI NXP — 125PSI (Non Lube)
 NHP — 151 thru 249 PSI (Non Lube)
 XP — 125PSI VHP — 151 thru 249PSI
 HP — 150PSI XHP — 250PSI or up

Suffixes:

- 1) “A”, “B”, “C”, “D”, “E”, “F” – Designates that unit is a redesigned model. In other words XP600AWGM is **not** the same unit as XP600WGM, or XP750WGM is **not** the same unit as XP750AWGM.
- 2) “W” or “S” – Designates whisperized or standard.
- 3) “F”, “W”, “D”, “GM”, “CU”, “CAT” or “JD” – These notations after the “Whisperized” or “Standard” notations refer to the driver.
 W — White CAT — Caterpillar
 D — Deutz JD — John Deere
 GM — General Motors F — Ford
 CU — Cummins IR — Ingersoll Rand

- 4) "U" – Designates utility version
Example – P100AWWU –This means:
P — 100PSI W — Whisperized
100 — 100CFM W — White engine
A — Redesigned unit U — Utility version
- 5) The other suffixes you may encounter after the CFM rating:
O.F. — Oil Field Rig
D.D. — Direct Drive
A.T. — Automatic Transmission

b) Model Notations for Light Towers.

Prefixes: L — Light Tower

Suffixes: 4MH – Number and type of Lamp (ex. 4 metal halide lamps)

c) Model Notations for Compressor Modules.

Prefixes: Same as listing in "a)" above.

Suffixes: CM - Compressor Module (Shaft mounted fan cooling)
CMH - Compressor Module (hydraulic mounted fan cooling)

Serial Number of the unit.

From the early 1950's to 1970, serial numbers were in the following sequence types:

- 1) 600AR18719 ----- R600 serial #18719
- 2) 125SRA19209 ----- RA125 serial #19209
- 3) A85RR61253 ----- RR85 serial #61253
- 4) 50621L900M ----- L900 serial #50621

These serial numbers gave the style of unit and the unique serial number. They were stamped on the air end and on the Portable Machine identification plate. Beginning in 1970 Portable Power went to a product code system for serial numbers. The basic concept was simple in that, a three digit product code would represent each style of compressor built by the Portable Division. The same concept was carried on until 1991.

Example of "Product Code" type serial number:

98716U77500

- 1) 98716 Serial number.
- 2) U Unit was manufactured in Mocksville.
- 3) 77 Unit was manufactured in 1977.
- 4) 500 Product code for DR600.

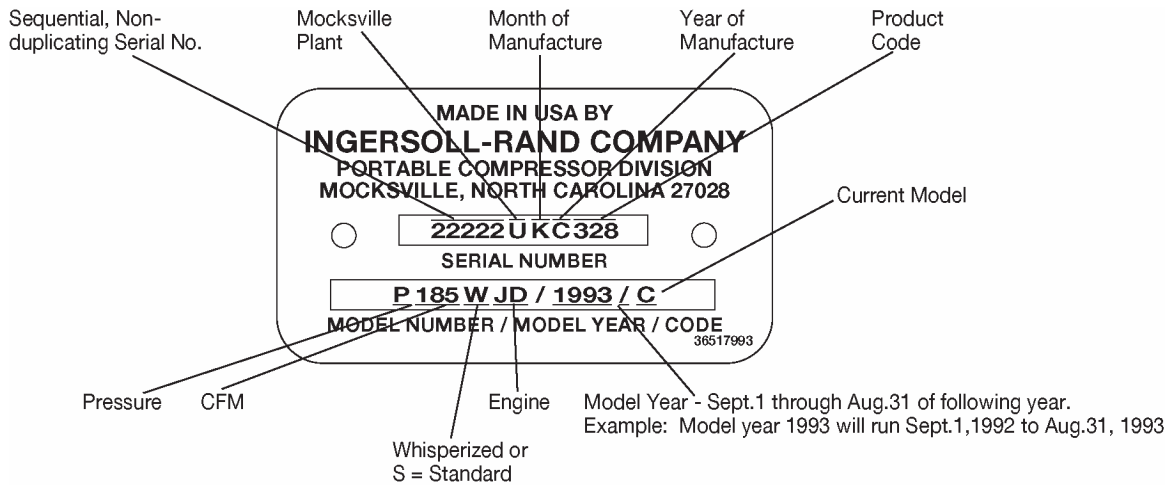
Also at this point in time, the compressor serial number was removed from the air end. In its place was stamped a unique air end serial number which was totally different from the compressor serial number. The compressor serial number was now stamped on the frame on the right hand side of the unit, when facing the drawbar looking toward the unit. Note: This may vary from unit to unit.

Beginning in 1991 with unit serial number 194276, the year of manufacture was removed from the serial number. A typical serial number looked as follows: 195200U578. Also in 1991, at unit serial number 199888, the serial number was no longer stamped on the frame of the unit.

Effective in August 1992, with unit serial number 214473, the numeric year of manufacture was reinstated by using two letters that give you the actual month and year of manufacture. The month and year of manufacture is encoded into the serial number according to the coding system that follows.

The new serial number plate will now show the model number for easier identification. This model number will be the nomenclature such as P185WJD. The letter immediately following the Model Year is a code that indicates the current model configuration of the unit. This is just one more feature that will make ordering service parts and referencing maintenance manuals easier.

The new metal serial number plate will look as follows:



<u>MONTH of Manufacture</u>	<u>CODE</u>	<u>YEAR of Manufacture</u>	<u>CODE</u>
January	A	1992	B, C
February	B	1993	D
March	C	1994	E
April	D	1995	F
May	E	1996	G
June	F	1997	H
July	G	1998	I
August	H	1999	J
September	I	2000	K
October	J	2001	L
November	K	2002	M
December	L	2003	N
		2004	O
		2005	P
		2006	Q
		2007	R
		2008	S
		2009	T
		2010	U
		2011	V
		2012	W
		2013	X
		2014	Y
		2015	Z

Location of Serial Number Plates (effective with S/N 214473)

Platinum Series (P100 thru P185):

Inside front panel near radiator (street side), or curb side fan shroud.

P250 thru P375 Cummins and John Deere:

Fan shroud (curb side).

Prestige Series (100 thru 250 cfm), P250WD, VHP300WD/P375WD, HP375WD, XP400WD, P425WD, XHP600/750SCAT:

Left hand side (street side) of fan shroud, or above instrument panel on horizontal part of box.

Fast Tracks (New style with fenders):

Fan shroud (curb side), or above instrument panel on horizontal part of box.

Fast Tracks, Large EPA, HP300WCU, P375WCU, HP450WCU, XP525WCU, P600WCU and other intermediate size compressors:

Above instrument panel on horizontal part of box.

AF-1600:

On outside of the discharge pipe support, midway between sub-base and top.

L6/L8 Light Towers:

On the backside of the instrument/control panel rear cover in top right hand corner. L6A and L8A: on left hand side (street side) of rear tower support above fan shroud. L6B and L8B: Right hand side (inside of unit) of rear panel near radiator. L6C and L8C: radiator side support on curb side.

Light Source:

Top of instrument panel box.

Compressor Module:

On top of inside bottom frame rail.

VEHICLE IDENTIFICATION NUMBERS (VIN)

Beginning in January of 2000, Portable Power began assigning vehicle identification numbers (VIN) to all highway tow able products. The VIN decal is attached to the exterior of the unit and looks as follows:

MANUFACTURED BY : INGERSOLL-RAND CO.			
DATE : <u>02/10/00</u>		GVWR (LBS) : <u>3484</u>	
GAWR (LBS)	TIRE	RIM	PSI
(1) <u>3345</u>	<u>P215/75R15B</u>	<u>15 X 6JJ</u>	<u>35</u>
THIS VEHICLE CONFORMS TO ALL APPLICABLE FEDERAL MOTOR VEHICLE SAFETY STANDARDS IN EFFECT ON THE DATE OF MANUFACTURE SHOWN ABOVE.			
V.I.N. <u>4FVCABAA6YU309282</u>			
TYPE OF VEHICLE : <u>TRAILER</u>			

MANUFACTURED BY / FABRIQUÉ PAR : INGERSOLL-RAND CO.			
V.I.N. / N.I.V. <u>4FVCABAA6YU309282</u>			
GVWR / PNVB (KG) : <u>1580</u>		DATE : <u>02/10/00</u>	
TYPE OF VEHICLE / TYPE DE VÉHICULE : <u>TRA / REM</u>		COLD INFL PRESS / PRESS DE GONF. À FROID	
GAWR / PNBE (KG)	TIRE / PNEU	RIM / JANTE	PSI / LPC (KPA)
(1) <u>1517</u>	<u>P215/75R15B</u>	<u>15 X 6JJ</u>	<u>35/241</u>
THIS VEHICLE CONFORMS TO ALL APPLICABLE STANDARDS PRESCRIBED UNDER THE CANADIAN MOTOR VEHICLE SAFETY REGULATIONS IN EFFECT ON THE DATE OF MANUFACTURE.		CE VÉHICULE EST CONFORME À TOUTES LES NORMES QUI LUI SONT APPLICABLES EN VERTU DU REGLEMENT SUR LA SÉCURITÉ DES VÉHICULES AUTOMOBILES DU CANADA EN VIGUEUR À LA DATE DE SA FABRICATION.	
		38531176 REV. D	

17 Digit VIN Number Logic.

1	2	3	4	5	6	7	8	9	10	11	12	13	14	15	16	17
manufacturers ID	TYPE		SERIES	CONFIGURATION	LENGTH	AXLE	CHECK DIGIT	MODEL YEAR	PLANT	First 6 digits from unit serial #						
			C=Compressor G=Genset L=Light Tower	COMPRESSORS A=100psi B=125psi C=150psi D=170psi E=200psi F=250psi G=300psi H=350psi LIGHT TOWERS R=5KW S=6KW T=8KW U=Lightsource	A=Standard B=Whisperized	A = 12ft B =13ft C =14ft D =15ft E =16ft F =17ft G =18ft H =19ft J =20ft K =21ft L =22ft	A=Single B=Tandem	*SUM/11	see table V=1997 W=1998 X=1999 Y=2000 Z=2001	U=Mocksville						