

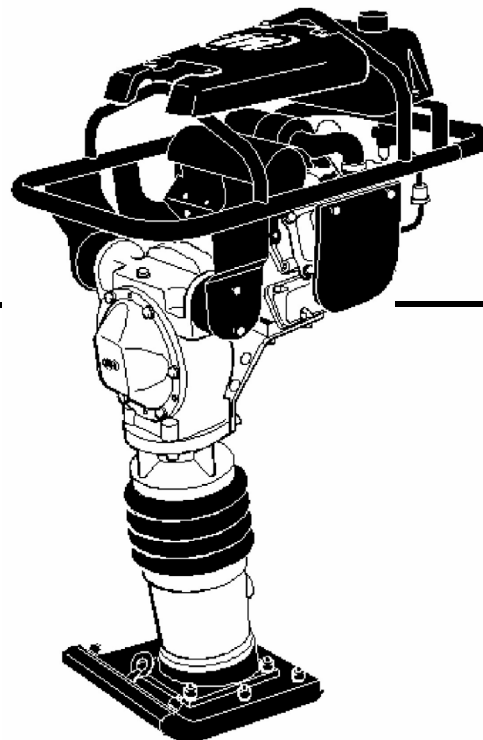
RX-264H

Upright Rammer



Doosan purchased Bobcat Company from Ingersoll-Rand Company in 2007. Any reference to Ingersoll-Rand Company or use of trademarks, service marks, logos, or other proprietary identifying marks belonging to Ingersoll-Rand Company in this manual is historical or nominative in nature, and is not meant to suggest a current affiliation between Ingersoll-Rand Company and Doosan Company or the products of either.

PARTS MANUAL



RX-264H Serial No. JF3500 →

HOW TO USE THIS MANUAL

This Parts Manual applies to all RX-264H Upright Rammers

When the Comm. # is not Known - Use the Word Index:

- Ingersoll-Rand's Word Index will make this item easy to locate. The Word Index is found in the very back of the book. The items listed are in alphabetical order and may be repeated several times depending on their functional descriptions.
- Let's assume you need to replace the AIR CLEANER FILTER.

Use any of the functional words in the item description to locate the desired item. Example: The first listing for the **Air Cleaner Filter** in the **Word Index** is: Air Cleaner Filter. The index shows the component will be found on pages **43 & 73**, which are the **Parts List** page numbers for the two different Engine Assemblies.

A	
Air Cleaner Filter	43, 73
Air Cleaner.....	43, 73
Alert Unit, Oil.....	33, 69
Arm, Governor	37,69
B	
Bag, Tool13	

- The item is also listed as:

Filter, Air Cleaner

Using the Parts Identification Pages:

- The **PARTS IDENTIFICATION PAGES** consist of the **PARTS ILLUSTRATION** (even numbered pages) and the **PARTS LIST** (odd numbered pages).
- The **Parts Illustration** shows the assembly with its component parts identified by **Item Numbers**.
- On the **Parts List**, the components are listed in **Item Number** order as found in the **ITEM** column. Other information provided by the **Parts List** is the **Comm. Number** which will be required to order Genuine Ingersoll-Rand Replacement Parts, a **functional description**, the **quantity** required to assemble one complete assembly, and any additional **notes/ dimensions** required to help place your parts order.
- **For the example: The Air Cleaner Filter shown on Page 43 is listed as Item 3, and the Comm. Number for the Element is 13221320, Quantity of 1.**

When the Comm. # is not known - Use the Table of Contents:

- Turn to the TABLE OF CONTENTS pages in the front of this manual. These pages show the major systems of the machine divided into FUNCTIONAL GROUPS.
- Find the Functional Group that best describes the area of the machine you are interested in. For example: Engine Assembly.
- See the sample Table of Contents shown below:

4 Engine Assembly - Internal Breakdown	
....	
04-01-13 Carburetor - BX-60WH	39
04-01-14 Air Cleaner - BX-60WH.....	43

Listed under the Functional Group of Internal Breakdown are SECTIONS (identified by numbers that describe major repairable components of that group. Find the listing that refers to the Honda Engine (58836438).

- Since the Air Cleaner Filter is what needs to be replaced, refer to the parts listing for the Engine. The Air Cleaner used on your machine is found in Functional Group 04; Section 01, this makes up the first part of the page number. Turn to that section of the parts manual and find the parts listing on page 43 for the Air Cleaner (13221312).

When the Comm. # is Known - Use the Numerical Index:

- If you already know the **Comm. Number** (part number) for the item required, a **NUMERICAL INDEX** is provided in the back of the manual to assist you. Look up the **Comm. Number** desired and the **Numerical Index** will show the **Page Number** where the item can be found.

For our Air Cleaner Filter Example: The Comm. Number for the Air Cleaner Filter 13221320 is found in the Numerical Index, it shows that component will be found on page 43.

UTILISATION DE CE CATALOGUE

Ce catalogue des pièces détachées s'applique à toutes les Pilonneuses Vibrantes RX-264H

En l'absence du numéro de pièce (Comm. Number), utilisez l'index de mots (Word Index):

- L'index de mots (Word Index) se trouve au dos de chaque catalogue. Les articles y sont classés dans l'ordre alphabétique et peuvent apparaître à plusieurs reprises, selon leurs descriptions fonctionnelles.
- Supposons que vous deviez remplacer le FILTRE A AIR (Air Cleaner Filter).

Utilisez n'importe quel terme fonctionnel de la description pour retrouver l'article souhaité. Par exemple: la première mention relative au **filtre à air** dans l'index de mots (Word Index) est: **Air Cleaner Filter**. L'index indique que le composant figure aux pages **43 & 73**, qui sont les numéros de page de la **Liste des pièces (Parts List)** des deux ensembles de moteur différents.

A	
Air Cleaner Filter	43, 73
Air Cleaner.....	43, 73
Alert Unit, Oil.....	33, 69
Arm, Governor	37,69
B	
Bag, Tool13	

- L'article est aussi répertorié sous la mention:
Filter, Air Cleaner (Filtre, à air)

Utilisation des pages d'identification des pièces (Parts Identification Pages):

- Les **PAGES D'IDENTIFICATION DES PIÈCES** incluent les **ILLUSTRATIONS DE PIÈCES (Parts Illustration)** (pages paires) et les **LISTES DE PIÈCES (Parts List)** (pages impaires).
- L'**illustration des pièces** représente l'ensemble avec les pièces qui le composent, identifiées par des **références (Item Numbers)**.
- La **Liste des pièces** énumère les composants dans l'ordre des **références** correspondant à la colonne **ARTICLE (Item)**. Les autres informations fournies par la **Liste des pièces** sont le **Numéro de pièce (Comm. Number)**, requis pour commander des pièces de rechange d'origine Ingersoll-Rand, la **description fonctionnelle**, la **quantité** requise pour assembler un ensemble complet ainsi que des **remarques/dimensions** diverses susceptibles de faciliter la commande de pièces.
- **Par exemple: Le filtre à air (Air Cleaner Filter) illustré à la Page 43 est répertorié sous l'article 3. Son numéro comm. est 13221320 et sa quantité, 1.**

En l'absence du numéro de pièce (Comm. Number), utilisez la table des matières (Table of Contents):

- Consultez les pages de la **TABLE DES MATIERES**, au début du catalogue. Ces pages répartissent les principaux circuits de la machine dans des **GROUPES FONCTIONNELS**.
- Retrouvez le **Groupe fonctionnel** qui décrit le mieux la zone de la machine qui vous intéresse. Par exemple: **Engine Assembly (Ensemble moteur)**
- Consultez l'exemple de **Table des matières** ci-dessous:

4 Engine Assembly - Internal Breakdown	
....	
04-01-13 Carburetor - BX-60WH	39
04-01-14 Air Cleaner - BX-60WH.....	43

Sous le **Groupe fonctionnel** des **compositions internes (Internal Breakdown)** sont répertoriées des **SECTIONS** (identifiées par des numéros décrivant les principaux composants réparables de ce groupe). Retrouvez la liste qui fait référence au moteur Honda (Honda Engine) (58836438).

- Comme le composant à remplacer est le **filtre à air (Air Cleaner Filter)**, consultez la liste des pièces (Parts List) du Moteur (Engine). Le filtre à air (Air Cleaner Filter) installé sur votre machine figure dans le **Groupe fonctionnel 04; Section 01**, qui constitue la première partie du numéro de page. Accédez à cette section du catalogue des pièces détachées et retrouvez les pièces énumérées à la page 43 qui constituent le **filtre à air (Air Cleaner)** (13221312).

Quand le numéro de pièce est connu, utilisez l'index numérique (Numerical Index):

- Si vous connaissez déjà le numéro de pièce de l'article requis, utilisez l'**INDEX NUMERIQUE (Numerical Index)**, fourni au dos du catalogue. Retrouvez le numéro de pièce souhaité et l'index numérique mentionnera le **Numéro de page** de l'article.

Pour notre exemple de filtre air (Air Cleaner Filter): le numéro de pièce (Comm. Number) de l'élément du filtre à air (Air Cleaner Filter) 13221320 figure dans l'index numérique (Numerical Index) et indique que ce composant se trouve à la page 43.

ANGABEN ZUR VERWENDUNG DIESES HANDBUCHES

Diese Ersatzteilleiste gilt für alle Stampfer des Typs RX-264H

Wenn die Teile-Nr. (Comm. #) unbekannt ist - das Stichwortverzeichnis (Word Index) verwenden:

- Das Stichwortverzeichnis befindet sich ganz hinten im Handbuch. Die Teile sind in alphabetischer Reihenfolge aufgeführt und können je nach ihrer Funktionsbeschreibung doppelt oder sogar mehrfach aufgeführt werden.
- Gehen wir einmal davon aus, dass der **LUFTFILTEREINSATZ (air cleaner filter)** ausgewechselt werden soll.

Zum Auffinden des gewünschten Teils eines der Funktionswörter in der Teilebeschreibung verwenden. Beispiel: Zum ersten Mal erscheint eine Auflistung für den **Luftfiltereinsatz** im Stichwortverzeichnis unter: Luftfiltereinsatz. Laut Stichwortverzeichnis ist das Teil auf den Seiten **43 & 73** beschrieben; es handelt sich dabei um die Seitennummer der **Teilleiste (parts list)** für die zwei unterschiedlichen Motorbaugruppen.

A	
Air Cleaner Filter	43, 73
Air Cleaner.....	43, 73
Alert Unit, Oil.....	33, 69
Arm, Governor	37,69
B	
Bag, Tool13	

- Das Teil ist ebenfalls aufgeführt unter:
Filter, Luftfilter

Verwendung der Teile-Seiten:

- Die **TEILE-SEITEN (parts identification pages)** bestehen aus der **TEILEDARSTELLUNG (parts illustration)** (Seiten mit gerader Seitennummer) und der **TEILLEISTE** (Seiten mit ungerader Seitennummer).
- Die **Teileabbildung** zeigt die komplette Baugruppe mit den dazugehörigen Einzelteilen, die durch die **Positionsnummern (item numbers)** gekennzeichnet sind.
- In der **Teilleiste** sind die Teile in der Spalte **POS. (item)** in der Reihenfolge der **Positionsnummer** aufgeführt. Zusätzlich enthält die **Teilleiste** folgende Angaben: die **Teilenummer (Comm. Number)**, die zum Bestellen von Original Ingersoll-Rand Ersatzteilen benötigt wird, eine **Funktionsbeschreibung**, die **Anzahl**, die für die Montage einer kompletten Baugruppe benötigt wird sowie zusätzliche **Bemerkungen/Maße**, die hilfreich für die Teilebestellung sind.
- **Beispiel:** der auf Seite 43 gezeigte Luftfiltereinsatz ist als Pos. 3 aufgeführt, die Bestellnummer für den Filtereinsatz lautet 13221320, und die Anzahl entspricht 1.

Wenn die Teile-Nr. unbekannt ist - das Inhaltsverzeichnis verwenden:

- Die Seiten mit dem **INHALTSVERZEICHNIS (table of contents)** vorn in diesem Handbuch aufschlagen. Auf diesen Seiten sind die wichtigsten Systeme der Maschine, unterteilt nach **FUNKTIONS-GRUPPEN** aufgelistet.
- Die Funktionsgruppe ausfindig machen, die am besten den Bereich der Maschine beschreibt, an dem Sie interessiert sind. Beispiel: Motorbaugruppe.
- Sehen Sie dazu die nachfolgend gezeigte Musterseite des **Inhaltsverzeichnisses**:

4 Engine Assembly - Internal Breakdown	
....	
04-01-13 Carburetor - BX-60WH	39
04-01-14 Air Cleaner - BX-60WH.....	43

Unter der **Funktionsgruppe** mit der Bezeichnung Internal Breakdown (Innere Ausstattung) sind **ABSCHNITTE (sections)** (gekennzeichnet durch die Nummer zur Beschreibung der wichtigsten reparablen Elemente der betreffenden Gruppe) aufgeführt. Die Auflistung suchen, die sich auf den Honda-Motor (M58836438) bezieht.

- Da der **Luftfiltereinsatz** ausgewechselt werden soll, muss in der Teileliste für den Motor nachgeschlagen werden. Der an der betreffenden Maschine verwendete Luftfilter kann unter **Funktionsgruppe 04; Abschnitt 1** nachgeschlagen werden; dieser Kennbuchstabe und die Kennnummer geben schon den ersten Teil der Seitennummer an. Zum betreffenden Abschnitt des Teilehandbuchs weiterblättern; hier ist dann auf Seite **43** die Teileliste für den **Luftfilter** (13221312) aufgeführt.

Wenn die Teile-Nr. bekannt ist - den Zahlenindex verwenden:

- Wenn die **Bestellnummer** (Teilenummer) für das gewünschte Teil bereits bekannt ist, kann in einem **ZAHLENINDEX** (numerical index) hinten im Handbuch nachgeschlagen werden. Die gewünschte **Bestellnummer** nachschlagen, und unter dem Zahlenindex kann dann die **Seitennummer** für das betreffende Teil nachgeschlagen werden.

Für das Beispiel des Luftfiltereinsatzes gilt also: Durch Nachschlagen der Bestellnummer für den Luftfiltereinsatz 13221320 im Zahlenindex wird festgestellt, dass das Teil auf Seite 43 beschrieben ist.

COME UTILIZZARE QUESTO MANUALE

Questo manuale ricambi é valido per tutte le Pestelli RX-264H

Quando non si conosce il numero di riferimento, utilizzare l'indice per parola (Word Index):

- L'indice per parola si trova alla fine del libro. Le voci sono elencate in ordine alfabetico e possono essere ripetute più volte a seconda della descrizione della loro funzione.
- Supponiamo che si debba cambiare l'**Air Cleaner Filter (l'elemento filtro dell'aria)**.

Per trovare la voce desiderata utilizzare una delle parole della descrizione della stessa voce. Esempio: la prima parola elencata per l'**Air Cleaner Filter (Elemento Filtro dell'aria)** nell'Indice per parola é: Air Cleaner Filter. L'indice indica che il componente si trova a pagina **43 e 73**, che é il numero della pagina della **Lista Ricambi (Parts List)** per diversi gruppi motore.

A	
Air Cleaner Filter	43, 73
Air Cleaner.....	43, 73
Alert Unit, Oil.....	33, 69
Arm, Governor	37,69
B	
Bag, Tool13	

- La voce é indicata anche in questo modo:

Filter, Air Cleaner

Utilizzo delle pagine d'identificazione dei ricambi (Parts Identification Pages):

- Le **PAGINE D'IDENTIFICAZIONE DEI RICAMBI (PARTS IDENTIFICATION PAGES)** sono costituite dalle **ILLUSTRAZIONI DEI RICAMBI (PARTS ILLUSTRATION)** (numeri di pagina pari) e dalla **LISTA RICAMBI (PARTS LIST)** (numeri di pagina dispari).
- La sezione Illustrazioni dei ricambi mostra il gruppo con i pezzi che lo compongono, identificati tramite **numeri di riferimento (Item Number)**.
- Sulla **Lista ricambi**, le componenti sono elencate in ordine di **numero di riferimento (Item Number)** come si troverà nella colonna per **PAROLE (Item)**. Altre informazioni fornite dalla **Lista Ricambi** sono: il numero di riferimento, necessario per ordinare i ricambi originali Ingersoll-Rand, una **descrizione delle funzioni (functional description)**, la **quantità (quantity)** richiesta per costituire un gruppo completo e le **note/ dimensioni (notes/dimensions)** supplementari necessarie a ordinare i ricambi.
- **Esempio: Air Cleaner Filter che appare alla pagina 43 é la terza voce della lista, il numero di riferimento per l'elemento é 13221320, Quantità 1.**

Quando non si conosce il numero di riferimento (Comm. #), utilizzare l'indice analitico (Table of Contents):

- Ritorniamo all'**INDICE ANALITICO** all'inizio di questo manuale. Queste pagine indicano i principali impianti della macchina divisi in **GRUPPI FUNZIONALI (FUNCTIONAL GROUPS)**.
- Localizzare il **Gruppo Funzionale** che descrive meglio l'area della macchina interessata. Ad esempio: **Gruppo motore**.
- Ecco un campione dell'**Indice analitico**:

4 Engine Assembly - Internal Breakdown	
....	
04-01-13 Carburetor - BX-60WH	39
04-01-14 Air Cleaner - BX-60WH.....	43

Nella lista **Gruppi funzionali di Internal Breakdown** (intervalli interni) ci sono le **SEZIONI (SECTIONS)** (identificate dai numeri che descrivono le principali componenti riparabili di quel gruppo). Scorrere la lista sul **motore** Honda (58836438).

- Dal momento che l'**Air Cleaner Filter** é l'elemento da sostituire, consultare la lista dei ricambi del Motore. L'Air Cleaner utilizzato sulla vostra macchina si trova nel **Gruppo funzionale 04; Sezione 01**, questo numero corrisponde alla prima parte del numero di pagina. Andare a questa sezione del manuale e cercare la lista dei pezzi alla pagina **43** per l'**Air Cleaner** (13221312).

Quando si conosce il numero di riferimento (Comm. #) utilizzare l'Indice numerico (Numerical Index):

- Se si conosce già il **numero di riferimento** (codice) del pezzo desiderato, fare riferimento all'**INDICE NUMERICO** alla fine del manuale. Individuare il Numero di riferimento desiderato e l'Indice numerico mostrerà il **Numero di pagina** in cui la voce può essere trovata.

Nel caso dell'esempio dell'Air Cleaner Filter: il **Numero di riferimento** per l'Air Cleaner Filter 13221320 é stato trovato nell'**Indice numerico**, da cui risulta che il pezzo si trova a pagina 43.

CÓMO USAR EL PRESENTE MANUAL

Este Manual de recambios se refiere a todas las Pisones RX-264H

Cuando no se conoce el nº de pedido (Comm.#) – Utilice el índice alfabético (Word Index):

- El índice alfabético se encuentra en la cont raportada del libro. Los elementos están ordenados por orden alfabético, y pueden aparecer varias veces según sea su descripción funcional.
- Supongamos de necesita sustituir el **FILTRO DE AIRE** (AIR CLEANER ELEMENT).

Use cualquiera de las palabras en la descripción de elementos para localizar el que usted necesite. Ejemplo: La primera aparición del **Filtro de aire** en el **índice alfabético** es: Air Cleaner Element. El índice le indica que el componente se encuentra en las páginas **43 y 73**, correspondiente a la **lista de piezas (Parts List)** de los dos conjuntos de motor diferentes.

A	
Air Cleaner Filter	43, 73
Air Cleaner.....	43, 73
Alert Unit, Oil.....	33, 69
Arm, Governor	37,69
B	
Bag, Tool13	

- El elemento aparece también como:
Elemento, filtro de aire (Element, Air Cleaner)

Uso de las páginas de identificación de repuestos:

- Las **PÁGINAS DE IDENTIFICACIÓN DE REPUESTOS** (Parts Identification Pages) están compuestas de la **PÁGINA DE ILUSTRACIÓN** (Parts Illustration) (páginas pares) y la **LISTA DE PIEZAS** (Parts List) (páginas impares).
- La **ilustración de las piezas** muestra los componentes del conjunto identificados por medio de un **número de orden** (Comm. Number).
- En la lista de piezas, los componentes se enumeran según el **número de orden (Item Number)** en la columna de **NÚMERO (Item)**. Otra información que aparece en la **lista de piezas** es el **número pedido**, necesario para encargar repuestos originales Ingersoll-Rand, una **descripción funcional (functional description)**, la **cantidad (quantity)** precisa para montar un conjunto completo y las **notas/dimensiones (notes/dimensions)** adicionales necesarias para poder hacer el pedido de piezas.
- **Por ejemplo: El filtro de aire es el elemento nº 3 de la página 43, y el número de pedido para dicho elemento es el M13221320, cantidad: 1.**

Cuando no se conoce el nº de pedido (Comm.#) - Utilice el índice (Table of Contents):

- Diríjase al **ÍNDICE**, situado en las primeras páginas del manual. Dichas páginas recogen los sistemas principales de la máquina divididos en **GRUPOS FUNCIONALES** (Functional Groups).
- Localice el grupo funcional que mejor describa la zona de la máquina en la que está interesado. Por ejemplo: **Conjunto del motor** (Engine Assembly).
- Véase el ejemplo de índice más abajo:

4 Engine Assembly - Internal Breakdown	
....	
04-01-13 Carburetor - BX-60WH	39
04-01-14 Air Cleaner - BX-60WH.....	43

Enumeradas bajo el **grupo funcional de divisiones internas** (Internal Breakdown) hay **SECCIONES** (Sections) (identificadas por medio de números que describen los principales componentes reparables de ese grupo. Localice la lista que hace referencia al motor Honda (58836438).

- Dado que el filtro de aire es lo que necesitamos sustituir, remítase a la lista de piezas del motor. El filtro de aire usado en su máquina se encuentra en el **grupo funcional 04; Sección 01**, correspondientes a la primera parte del número de página. Diríjase al manual y encontrará la lista de piezas en la página **43** para el **filtro de aire** (13221312).

Cuando sí se conoce el nº de pedido (Comm.#) – Utilice el índice numérico (Numerical Index):

- Si conociese de antemano el número de pedido (referencia) del elemento de que se trate, encontrará en la parte posterior del manual un **ÍNDICE NUMÉRICO** que le será de utilidad. Busque el **número de pedido** que desee y el **índice numérico** le proporcionará el **número de página** en el que encontrará el elemento.

En el caso de nuestro filtro de aire de ejemplo: El número de pedido del filtro de aire 13221320 se encuentra en el índice numérico, donde vemos que el componente está en la página 43.

HOE MOET U DIT HANDBOEK GEBRUIKEN

Dit onderdelenhandboek is van toepassing op alle RX-264H Trilstampers

Als het bestelnummer niet bekend is, gebruikt u de woordindex:

- De woordindex van Ingersoll-Rand maakt dit artikel gemakkelijk op te sporen. De woordindex vindt u helemaal achterin het boek. De artikelen in de lijst staan in alfabetische volgorde en kunnen, afhankelijk van hun functiebeschrijvingen, verscheidene keren worden herhaald.
- Stel dat u het **LUCHTFILTER (AIR CLEANER FILTER)** moet vervangen.

Gebruik een van de functiewoorden in de artikelbeschrijving om het gewenste artikel op te sporen. Voorbeeld: De eerste beschrijving voor het **luchtfILTER** (Air Cleaner Filter) in de woordindex is: **Luchtreiniger Filter** (Air Cleaner Filter). De index toont dat de component kan worden gevonden op de pagina's **43 & 73**. Dit zijn de paginanummers van de onderdelenlijst voor de twee verschillende motorassemblages (Engine Assemblies).

A	
Air Cleaner Filter	43, 73
Air Cleaner.....	43, 73
Alert Unit, Oil.....	33, 69
Arm, Governor	37,69
B	
Bag, Tool13	

- Het artikel is ook in de lijst opgenomen als:
Filter, luchtreiniger (Filter, Air Cleaner)

De pagina's onderdelenidentificatie gebruiken:

- De PAGINA'S **ONDERDELENIDENTIFICATIE** bestaan uit de **ILLUSTRATIE VAN DE ONDERDELEN** (even genummerde pagina's) en de **ONDERDELENLIJST** (oneven genummerde pagina's).
- De illustratie van de onderdelen toont de assemblage met zijn componentonderdelen, geïdentificeerd aan de hand van de artikelnummers.
- Op de onderdelenlijst zijn de componenten opgesomd op volgorde van de artikelnummers, zoals ze worden aangetroffen in de kolom **ARTIKEL**. Andere informatie die door de onderdelenlijst wordt verstrekt, is het bestelnummer dat vereist is om originele Bobcat reserveonderdelen te bestellen, een functiebeschrijving, het aantal dat vereist is voor de montage van een complete assemblage, en alle extra opmerkingen/ afmetingen die vereist zijn om u te helpen bij de plaatsing van uw onderdelenbestelling.
- **Als voorbeeld: Het luchtfILTER (Air Cleaner Filter) dat wordt getoond op pagina 43 is in de lijst opgenomen als artikel 3, en het bestelnummer voor het element is 13221320, het aantal is 1.**

Als het bestelnummer niet bekend is, gebruikt u de inhoudsopgave:

- Blader naar de pagina's van de INHOUDSOPGAVE vooraan in deze handleiding. Deze pagina's tonen de belangrijkste systemen van de machine, verdeeld in FUNCTIEGROEPEN.
- Zoek de functiegroep die het gedeelte van de machine waarin u geïnteresseerd bent het best beschrijft. Bijvoorbeeld: Motorassemblage (Engine Assembly).
- Zie het voorbeeld van de Inhoudsopgave dat hieronder wordt getoond:

4 Engine Assembly - Internal Breakdown	
....	
04-01-13 Carburetor - BX-60WH	39
04-01-14 Air Cleaner - BX-60WH.....	43

In de lijst zijn onder de functiegroep Interne storingen (Internal Breakdown) SECTIES opgenomen (geïdentificeerd door nummers die de belangrijkste repareerbare onderdelen van die groep beschrijven). Zoek de beschrijving die verwijst naar de Honda motor (58836438) (Honda Engine).

- Omdat het **luchtfILTER** (Air Cleaner Filter) vervangen moet worden, raadpleegt u de onderdelenlijst voor de **motor** (Engine).
De op uw machine gebruikte **luchtreiniger** (Air Cleaner) vindt u in functiegroep 04; Sectie 01, dit vormt het eerste deel van het paginanummer. Blader naar die sectie van het onderdelenhandboek en zoek de onderdelenlijst op pagina **43** van de **luchtreiniger** (13221312) (Air Cleaner).

Als het bestelnummer wel bekend is, gebruikt u de numerieke index:

- Als u het **bestelnummer** (onderdeelnummer) van het vereiste artikel al kent, gebruikt u de **NUMERIEKE INDEX** achterin de handleiding om u bij te staan. Zoek het gewenste bestelnummer op en de numerieke index toont u het paginanummer waar het artikel kan worden aangetroffen.

Voor ons Luchtfiltervoorbeeld: het bestelnummer voor het luchtfILTER 13221320 vindt u in de numerieke index. Deze toont aan dat de component kan worden gevonden op pagina 43.

STANDARD ABBREVIATIONS

AC	Alternating Current	Ref	Reference
A/R	As Required	RH	Right Hand
ARC	Authorized Rebuilt Component	RHSS	Round Head SelfTapping Screw
Assy	Assembly	ROPS	Roll-Over Protection System
BHCS	Button Head Cap Screw	RPM	Revolutions Per Minute
Cu Yd	Cubic Yard	SAE	Society of Automotive Engineers
Cyl	Cylinder	Sec	Section
DC	Direct Current	SFH	Slotted Fillister Head
Dia	Diameter	SHCS	Socket Head Cap Screw
Eff	Effective	SMV	Slow Moving Vehicle
FHCS	Flat Head Cap Screw	S/N	Serial Number
F-N-R	Forward-Neutral-Reverse	SPST	Single Pole/Single Throw
FOPS	Falling Object Protection System	S.T.	Self-Tapping
F/P	Fork Positioning	Std	Standard
Gr	Grade	Str	Straight
HHCS	Hex Head Cap Screw	Sw	Swivel
HHMS	Hex Head Machine Screw	Tach	Tachometer
HSBHCS	Hex Socket Button Head Cap Screw	Temp	Temperature
ID	Inside Diameter	Thd	Thread
LH	Left Hand	Thk	Thick
M	Metric	Typ	Typical
MIK	Maintenance Interval Kit	UNC	Unified Coarse
mm	Millimeter	UNF	Unified Fine
Nat Asp	Naturally Aspirated	Univ	Universal
Neg	Negative	Var	Variable
NSS	Not Sold Separately	V	Volt
NSVA	Non Serviceable Assembly	VPM	Vibrations Per Minute
OD	Outside Diameter	Wgt	Weight
Pos	Positive	w/	With
PSI	Pounds per Square Inch	w/o	Without
Q/A	Quick-Attach	Wp	Weatherproof

ABBREVIATIONS STANDARD

AC	Courant alternatif	Ref	Référence
A/R	Comme requis	RH	Droite
ARC	Composant rénové autorisé	RHSS	Vis auto-taraudeuse à tête arrondie
Assy	Ensemble	ROPS	Dispositif de protection contre le retournement
BHCS	Vis à tête demi-ronde	RPM	Tours par minute
Cu Yd	Yard cubique	SAE	Society of Automotive Engineers
Cyl	Vérin	Sec	Section
DC	Courant continu	SFH	Tête conique à encoche
Dia	Diamètre	SHCS	Vis creuse à tête demi-ronde
Eff	Effectif	SMV	Véhicule lent
FHCS	Vis à tête plate	S/N	Numéro de série
F-N-R	Avant-Point mort-Arrière	SPST	Contacteur unipolaire
FOPS	Dispositif de protection contre la chute d'objets	S.T.	Auto-taraudeuse
F/P	Positionnement des fourches	Std	Standard
Gr	Classe	Str	Droit
HHCS	Vis à tête hex	Sw	Pivot
HHMS	Vis à six pans	Tach	Tachymètre
HSBHCS	Vis demi-ronde à six pans creuse	Temp	Température
ID	Diamètre intérieur	Thd	Filet
LH	Gauche	Thk	Epaisseur
M	Métrique	Typ	Typique
MIK	Kit de maintenance	UNC	Unifié gros
mm	Millimètre	UNF	Unifié fin
Nat Asp	Aspiré naturellement	Univ	Universel
Neg	Négatif	Var	Variable
NSS	Non vendu séparément	V	Volt
NSVA	Ensemble ne nécessitant pas d'entretien	VPM	Vibrations par minute
OD	Diamètre extérieur	Wgt	Poids
Pos	Positif	w/	Avec
PSI	Livres par pouce carré	w/o	Sans
Q/A	Fixation rapide	Wp	Etanche

STANDARDABKÜRZUNGEN

AC	Wechselstrom	RH	Rechts
A/R	Nach Bedarf	RHSS	Rundkopf-Schneidschraube
ARC	Mit Genehmigung instandgesetztes Teil	ROPS	Überrollschutz
Assy	Baugruppe	RPM	Umdrehungen pro Minute
BHCS	Halbrundschrabe	SAE	Gesellschaft der Automobilingenieure (Society of Automotive Engineers)
Cu Yd	Kubikyard	Sec	Kapitel, Schnitt
Cyl	Zylinder	SFH	Schlitzschraube mit Zylinderkopf
DC	Gleichstrom	SHCS	Innensechskant-Kopfschraube
Dia	Durchmesser	SMV	Langsam fahrendes Fahrzeug
Eff	Effektiv	S/N	Seriennummer
FHCS	Senkkopfschraube	SPST	Einpoliger Schalter
F-N-R	Vorwärts-Leerlauf-Rückwärts	S.T.	Selbstschneidend
FOPS	Aufbau zum Schutz gegen herabfallende Gegenstände	Std	Standard
F/P	Gabelpositionierung	Str	Gerade
Gr	Klasse	Sw	Drehgelenk
HHCS	Sechskantschraube	Tach	Drehzahlmesser
HHMS	Sechskant-Maschinenschraube	Temp	Temperatur
HSBHCS	Innensechskant-Halbrundkopfschraube	Thd	Gewinde
ID	Innendurchmesser	Thk	Dick
LH	Links	Typ	Typisch
M	Metrisch	UNC	Grobgewinde
MIK	Wartungssatz	UNF	Feingewinde
mm	Millimeter	Univ	Universal
Nat Asp	Saug-Neg Negativ	Var	Variable
NSS	Nicht separat verkauft	V	Volt
NSVA	Nicht wartbare Baugruppe	VPM	Vibrationen pro Minute
OD	Außendurchmesser	Wgt	Gewicht
Pos	Positiv	w/	Mit
PSI	Pfund pro Quadratzoll	w/o	Ohne
Q/A	Schnellanbringung	Wp	Witterungsbeständig
Ref	Referenz		

ABBREVIAZIONI STANDARD

AC	Corrente alternata	Ref	Riferimento
A/R	Secondo la necessità	RH	Destro
ARC	Componente a ricostruzione autorizzata	RHSS	Vite autofilettante a testa circolare
Assy	Gruppo	ROPS	Sistema di protezione contro il ribaltamento
BHCS	Vite con testa tonda stretta	RPM	Giri al minuto
Cu Yd	larda cubica	SAE	Society of Automotive Engineers
Cyl	Cilindro	Sec	Sezione
DC	Corrente diretta	SFH	Testa cilindrica a fessura
Dia	Diametro	SHCS	Vite ad esagono incassato
Eff	Effettivo	SMV	Veicolo lento
FHCS	Vite a testa piana	S/N	Numero di serie
F-N-R	Avanti-Folle-Retromarcia	SPST	Interruttore unipolare
FOPS	Sistema di protezione contro la caduta di oggetti	S.T.	Autofilettante
F/P	Posizionamento della forza	Std	Standard
Gr	Grado	Str	Diritto
HHCS	Vite a testa esagonale	Sw	Interruttore
HHMS	Vite a testa esagonale lavorata	Tach	Tachimetro
HSBHCS	Vite a testa esagonale incassata	Temp	Temperatura
ID	Diametro interno	Thd	Filettatura
LH	Sinistro	Thk	Grosso
M	Metrico	Typ	Tipico
MIK	Kit intervallo di manutenzione	UNC	Passo grosso
mm	Millimetro	UNF	Passo fine
Nat Asp	Aspirato naturalmente	Univ	Universale
Neg	Negativo	Var	Variabile
NSS	Non venduto separatamente	V	Volt
NSVA	Gruppo non riparabile	VPM	Vibrazioni al minuto
OD	Diametro esterno	Wgt	Peso
Pos	Positivo	w/	Con
PSI	Libbre per pollice quadrato	w/o	Senza
Q/A	Aggancio rapido	Wp	Resistente all'acqua

ABREVIATURAS ESTÁNDAR

AC	Corriente alterna	Ref	Número de orden
A/R	Según sea necesario	RH	Derecha
ARC	Componente reelaborado autorizado	RHSS	Tornillo autorroscante cabeza redonda
Assy	Conjunto	ROPS	Sist. protección contra vuelcos
BHCS	Tornillo de cabeza de botón	RPM	Revoluciones por minuto
Cu Yd	Yarda cúbica	SAE	Society of Automotive Engineers
Cyl	Cilindro	Sec	Sección
DC	Corriente continua	SFH	Cabeza con ranura de encaje
Dia	Diámetro	SHCS	Tornillo con cabeza de tubo
Eff	Efectivo	SMV	Vehículo lento
FHCS	Tornillo de cabeza plana	S/N	Número de serie
F-N-R	Adelante-Punto muerto-Atrás	SPST	Unipolar y univanal (un contacto)
FOPS	Sist. protección contra caída de objetos	S.T.	Autorroscante
F/P	Posicionamiento de las horquillas	Std	Estándar
Gr	Nivelar	Str	Recto
HHCS	Tornillo de cabeza hexagonal	Sw	Basculante
HHMS	Tornillo de cabeza hexagonal maqui- nada	Tach	Tacómetro
HSBHCS	Tornillo de cabeza botón hexagonal	Temp	Temperatura
ID	Diámetro interior	Thd	Rosca
LH	Izquierda	Thk	Grueso
M	Métrico	Typ	Típico
MIK	Conjunto de intervalo de mantenimiento	UNC	Paso ancho unificado
mm	Milímetro	UNF	Paso fino unificado
Nat Asp	Aspirado	Univ	Universal
Neg	Negativo	Var	Variable
NSS	No se vende por separado	V	Voltios
NSVA	Conjunto no reparable	VPM	Vibraciones por minuto
OD	Diámetro exterior	Wgt	Peso
Pos	Positivo	w/	Con
PSI	Libras por pulgada cuadrada	w/o	Sin
Q/A	Quick-Attach (enganche rápido)	Wp	Impermeable

STANDAARD AFKORTINGEN

AC	Wisselstroom	Ref	Referentie
A/R	Zoals vereist	RH	Rechts
ARC	Toegelaten ruilcomponent	RHSS	Bolkop parkerschroef
Assy	Samenstel	ROPS	Roll-over beschermingsysteem
BHCS	(Plat)bolkop kopschroef	TPM	Toeren per minuut
Cu Yd	Kubieke yard	SAE	Society of Automotive Engineers (Vereniging van autotechnische ingenieurs)
Cyl	Cilinder	Sec	Sectie
DC	Gelijkstroom	SFH	Sleufcilinderkop
Dia	Diameter	SHCS	Inbuskop kopschroef
Eff	Effectief	SMV	Traag bewegend voertuig
FHCS	Platkop kopschroef	S/N	Serienummer
F-N-R	Vooruit -Vrijstand-Achteruit	SPST	Enkelpolig/enkele wikkelspoed
FOPS	Beschermingsysteem tegen vallende objecten	S.T.	Zelftappend
F/P	Vorkpositionering	Std	Standaard
Gr	Graad	Str	Recht
HHCS	Zeskantkop kopschroef	Sw	Wartel
HHMS	Zeskantkop kolomschroef	Tach	Snelheidsmeter
HSBHCS	Platbolkop kopschroef met verzonken zeskant	Temp	Temperatuur
ID	Binnendiameter	Thd	Schroefdraad
LH	Links	Thk	Dik
M	Metrisch	Typ	Karakteristiek
MIK	Onderhoudsintervalkit	UNC	Grove schroefdraad
mm	Millimeter	UNF	Fijne schroefdraad
Nat Asp	Natuurlijke aanzuiging	Univ	Universeel
Neg	Negatief	Var	Variabele
NSS	Niet afzonderlijk verkocht	V	Volt
NSVA	Niet onderhoudbaar samenstel	VPM	Trillingen per minuut
OD	Buitendiameter	Wgt	Gewicht
Pos	Positief	w/	Met
PSI	Pond per vierkante inch	w/o	Zonder
Q/A	Snelbevestiging	Wp	Weerbestendig

CONTENTS

0 Recommended Service Parts

00-01-01 Recommended Service Parts - 0 - 1000 Operating Hours	3
00-01-02 Recommended Service Parts - 1000 - 3000 Operating Hours	5
00-01-03 Recommended Service Parts - 3000 < Operating Hours	7

1 Upper Section And Engine

01-01-01 Upper Section And Engine	9
-----------------------------------	---

2 Lower Section

02-01-01-Lower Section	13
------------------------	----

3 Handle Section

03-01-01 Handle Section	17
03-01-02 Carrying Cart And Tools	21

4 Decals

04-01-01 Decals	23
-----------------	----

5 Internal Breakdowns

05-01-01 Cylinder Head	25
05-01-02 Crank Case Cover	27
05-01-03 Crankshaft	29
05-01-04 Piston	31
05-01-05 Camshaft	33
05-01-06 Starter	35
05-01-07 Fan Cover	37
05-01-08 Carburetor	39
05-01-09 Air Cleaner	41
05-01-10 Muffler	43
05-01-11 Flywheel	45
05-01-12 Control	47
05-01-13 Fuel Tank	49

Intentionally left blank

Upright Rammer RX-264H

Recommended Service Parts

0 - 1000 Operating Hours

**Recommended
Service Parts**
0-1000 Operating Hours

PC000000

Recommended Service Parts
1000 - 3000 Operating Hours

**Recommended
Service Parts**
1000-3000 Operating Hours

Recommended Service Parts 1000 - 3000 Operating Hours

**Section
00-01-02**

Item	Part Number	Denomination	Remarks	Serial Number	Qty
		Engine			
	58836933	Oil Gauge			1
	59244145	Engine Stop Switch			1
		Frame			
	59830315	Throttle Lever			1
	54680459	Throttle Cable			1

Recommended Service Parts

3000 < Operating Hours

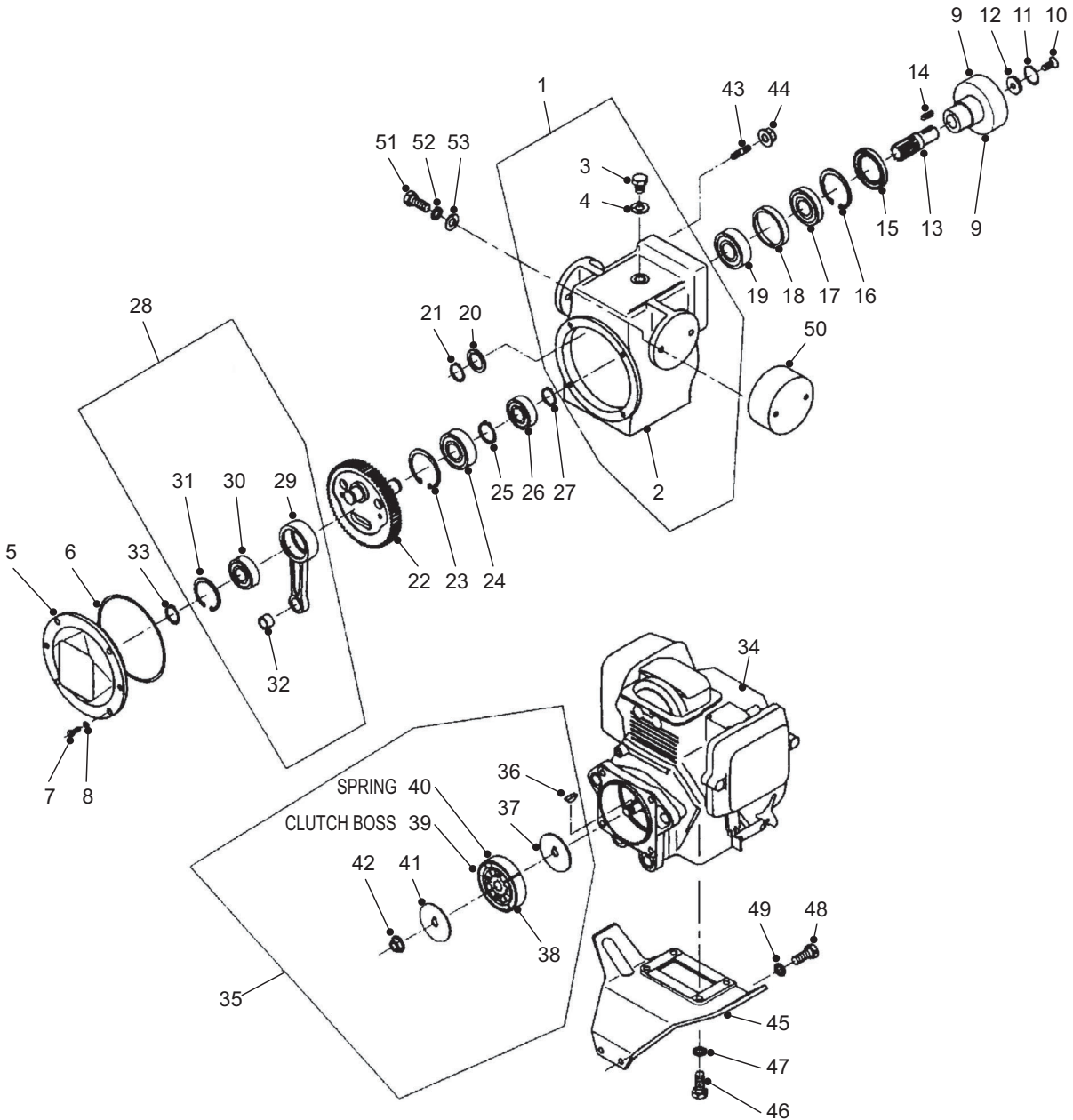
**Recommended
Service Parts**
3000 < Operating Hours

Recommended Service Parts
3000 < Operating Hours

Section
00-01-03

Item	Part Number	Denomination	Remarks	Serial Number	Qty
		Engine			
	22328793	Muffler			1
	22328330	Intake Valve			1
	22328348	Exhaust Valve			1

Upper Section And Engine



PC000043

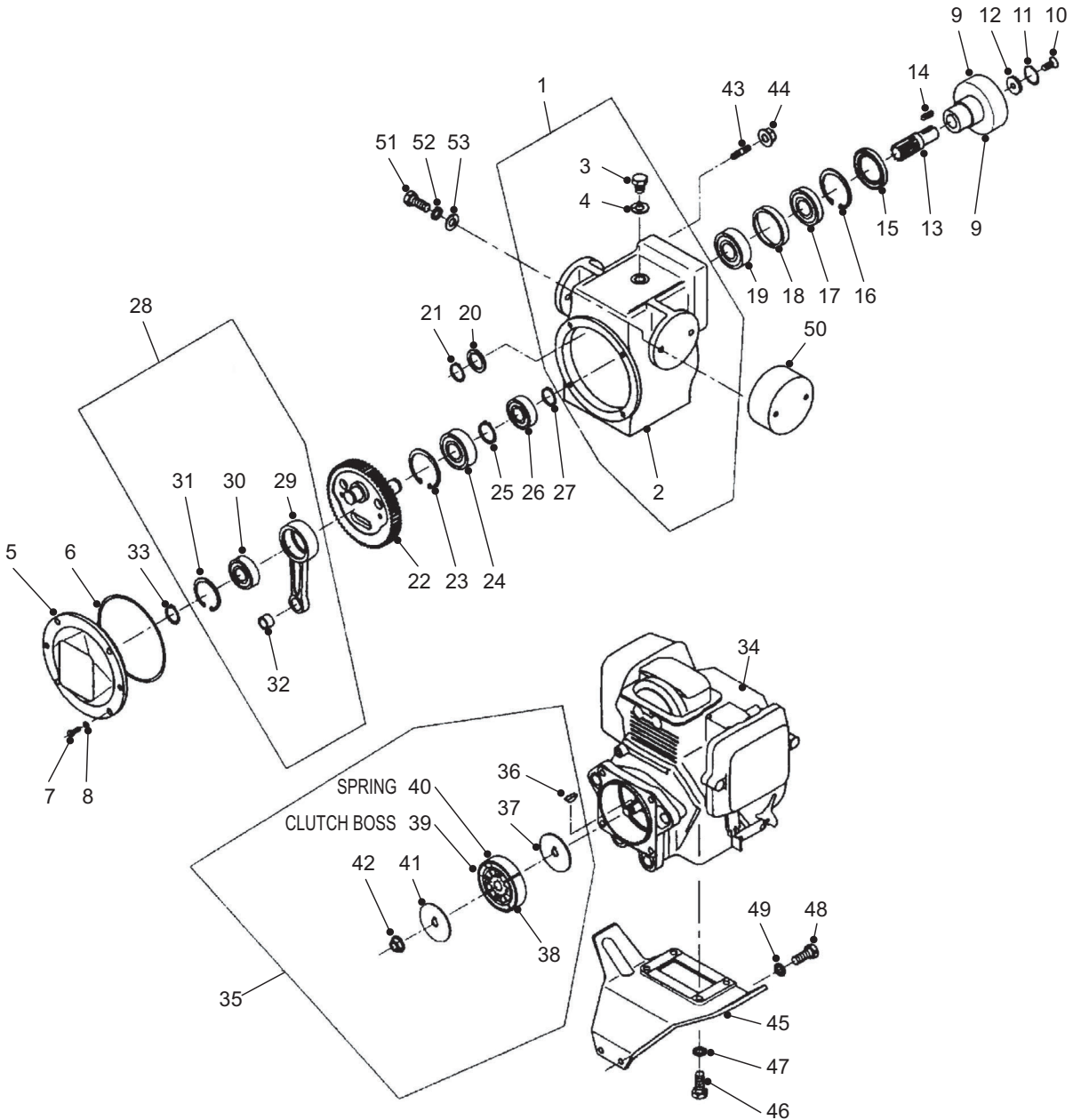
Upper Section And Engine

**Section
01-01-01**

Item	Part Number	Denomination	Remarks	Serial Number	Qty
1	54680145	Crackcase CP	Includes Ref 2 - 4		1
2	NSS	Crankcase			1
3	59831123	Plug			1
4	59831131	Packing			1
5	54680152	Crankcase Cover			1
6	58836610	O-ring			1
7	59952325	Bolt			4
8	59831925	Spring Washer			4
9	54680160	Clutch Drum			1
10	59187864	Screw			1
11	59187856	O-ring			1
12	59187849	O-ring Washer			1
13	54680178	Pinion Gear			1
14	59839852	Key			1
15	58836638	Oil Seal			1
16	59839332	Snap Ring			1
17	54680186	Ball Bearing			1
18	58836651	Collar			1
19	59239152	Ball Bearing			1
20	58836677	Collar			1
21	58836685	Snap Ring			1
22	54680202	Crank Gear			1
23	59839332	Snap Ring			1
24	59839274	Ball Bearing			1
25	59839282	Snap Ring			1
26	59839431	Ball Bearing			1
27	59839456	Snap Ring			1
28	58836727	Crank Rod Assembly	Includes Ref. 29 - 32		1
29	NSS	Crank Rod			1
30	59839431	Ball Bearing			1
31	59837948	Snap Ring			1

Upper Section And Engine

Recurrence of previous drawing



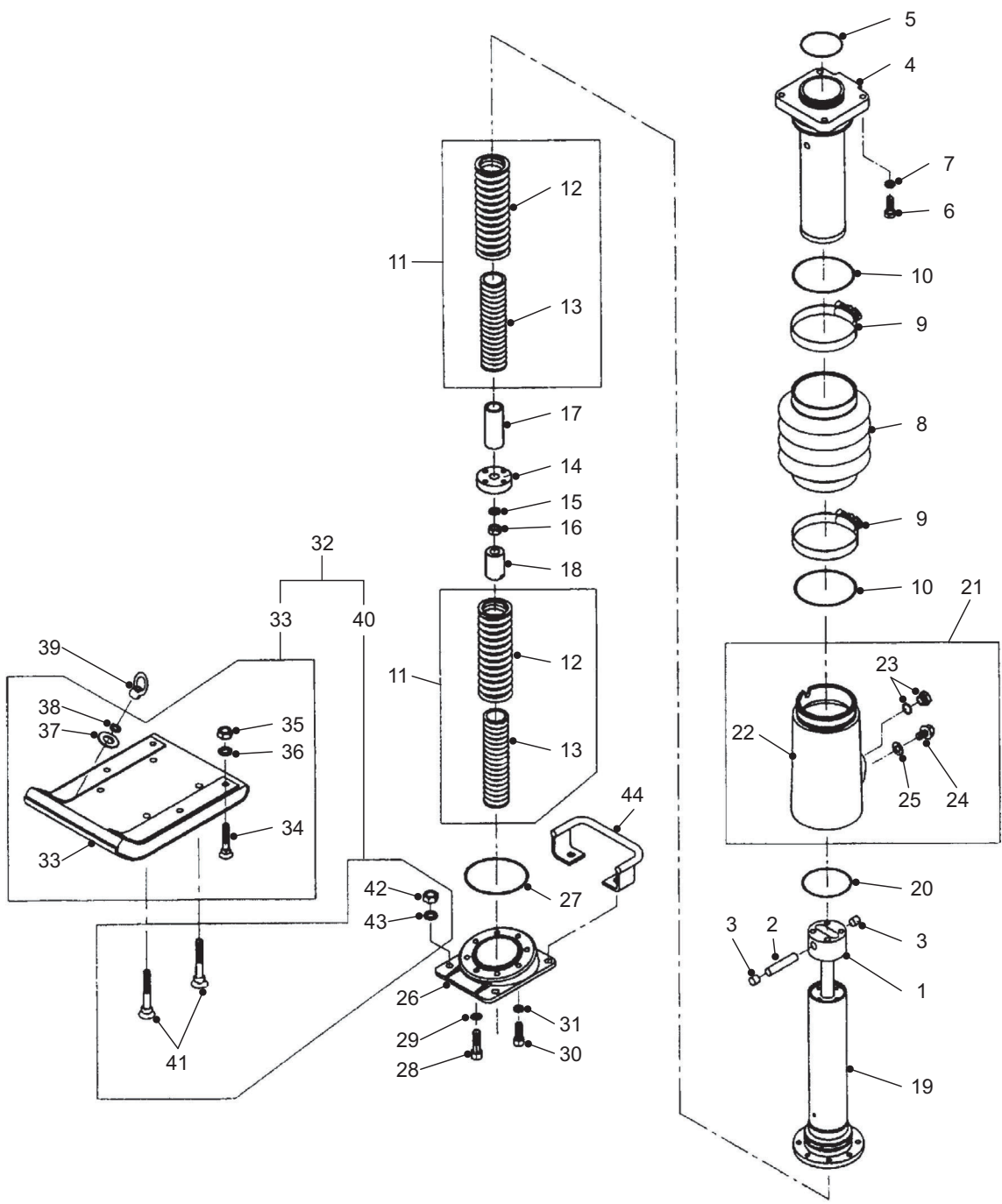
PC000043

Upper Section And Engine

**Section
01-01-01**

Item	Part Number	Denomination	Remarks	Serial Number	Qty
32	58836735	Bushing			1
33	59839456	Snap Ring			1
34	13201397	Honda Engine			1
35	54680228	Clutch Assembly	Includes Ref. 36 - 42		1
36	54680236	Woodruff Key			1
37	59187963	Guide Plate (A)			1
38	59187930	Clutch Lining Shoe			4
39	59187948	Clutch Boss			1
40	59187955	Clutch Spring			2
41	59187971	Guide Plate (B)			1
42	54680244	Flange Nut			1
43	13201405	Stud Bolt			4
44	13201413	Flange Nut			4
45	13201421	Engine Support			1
46	59952382	Bolt			4
47	59831925	Spring Washer			4
48	59952325	Bolt			2
49	59831925	Spring Washer			2
50	59239376	Rubber Buffer			2
51	59952325	Bolt			4
52	59831925	Spring Washer			4
53	59835371	Washer			4

Lower Section



PC000044

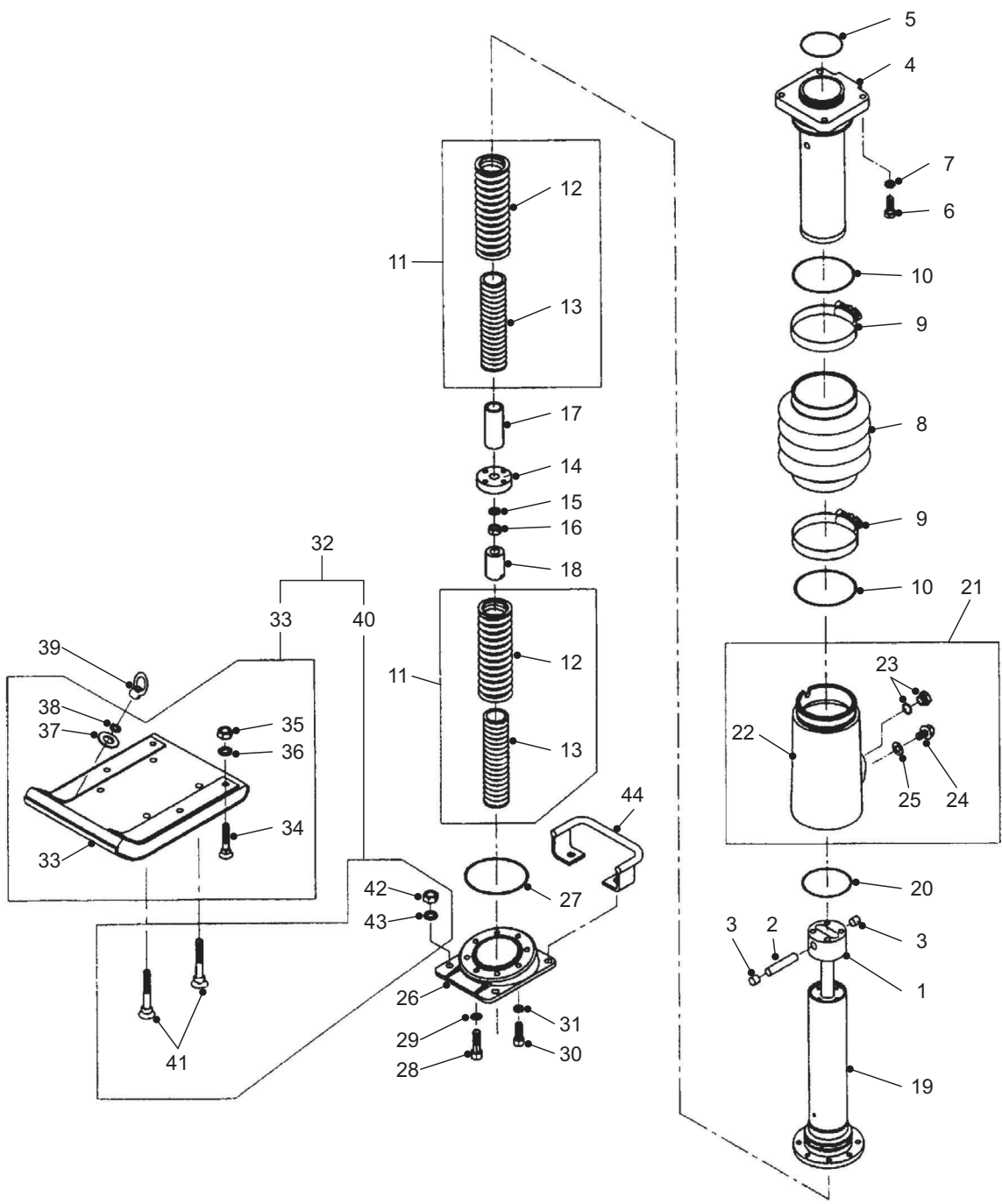
Lower Section

**Section
02-01-01-**

Item	Part Number	Denomination	Remarks	Serial Number	Qty
1	58836750	Piston			1
2	58836792	Crank Rod Pin			1
3	59841239	Nylon Plug			2
4	54680301	Upper Cylinder			1
5	58836818	O-ring			1
6	59842708	Bolt			4
7	59951632	Spring Washer			4
8	54680319	Bellows			1
9	54680327	Band w/Nut			2
10	58836842	O-ring			2
11	54680335	Coil Spring Assembly	Includes Ref. 12 + 13		2
12	58836859	Large Coil Spring			2
13	58836867	Small Coil Spring			2
14	58836875	Piston Guide			1
15	59840140	Spring Washer			1
16	58836883	Nut			1
17	58836891	Upper Damper			1
18	58836909	Lower Damper			1
19	58836917	Lower Cylinder			1
20	59838334	O-ring			1
21	54680343	Pipe Protector Assembly	Includes Ref. 22 - 25		1
22	NSS	Pipe Protector			1
23	58836933	Oil Gauge			1
24	59831123	Plug			1
25	59831131	Packing			1
26	13202114	Foot Block			1
27	59841460	O-ring			1
28	58836958	Socket Head Bolt			6
29	59831560	Lockwasher			6
30	58836966	Socket Head Bolt			2
31	59831560	Lockwasher			2

Lower Section

Recurrence of previous drawing



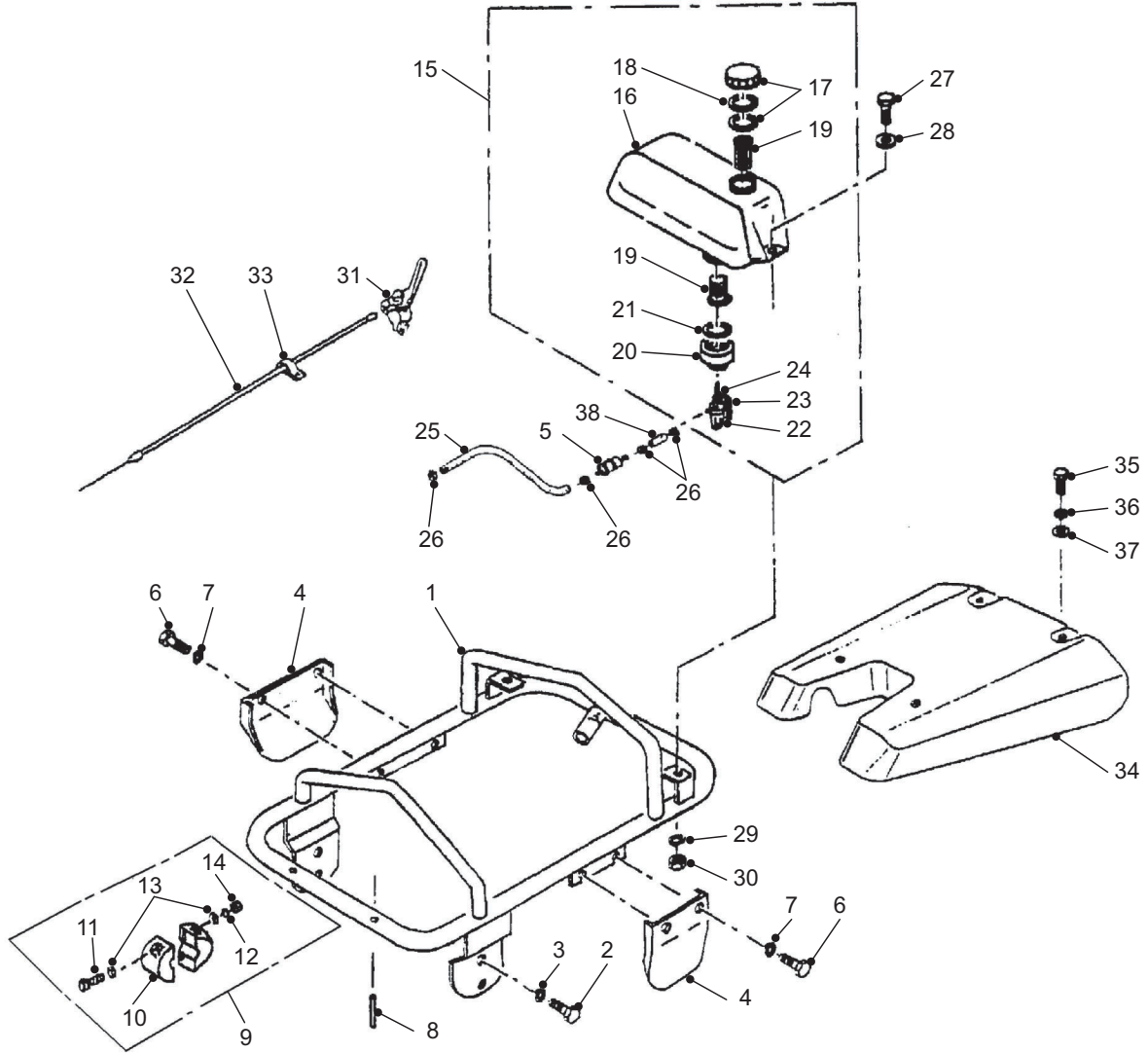
PC000044

Lower Section

Section
02-01-01-

Item	Part Number	Denomination	Remarks	Serial Number	Qty
32	54680350	Foot Plate & Bolt Assembly	Includes Ref. 33 + 40		1
33	54680368	Foot Plate Assembly (Standard)			1
	54680376	Foot Plate Assembly (Optional)			1
	58836974	Foot Plate Assembly (Optional)			1
	58836552	Foot Plate Assembly (optional)	Includes Ref. 34 - 36 + 38 - 39		1
34	59188086	Flush Bolt			7
35	59834721	Nylon Nut			6
36	59951632	Spring Washer			6
37	59188102	Washer			1
38	59951632	Spring Washer			1
39	59188094	Eye Nut			1
40	54680384	Flush Bolt Assembly	Includes Ref. 41 - 43		1
41	58836982	Flush Bolt			2
42	59840454	Nylon Nut			4
43	59237388	Spring Washer (Wave)			4
44	54680392	Lifting Handle			1

Handle Section



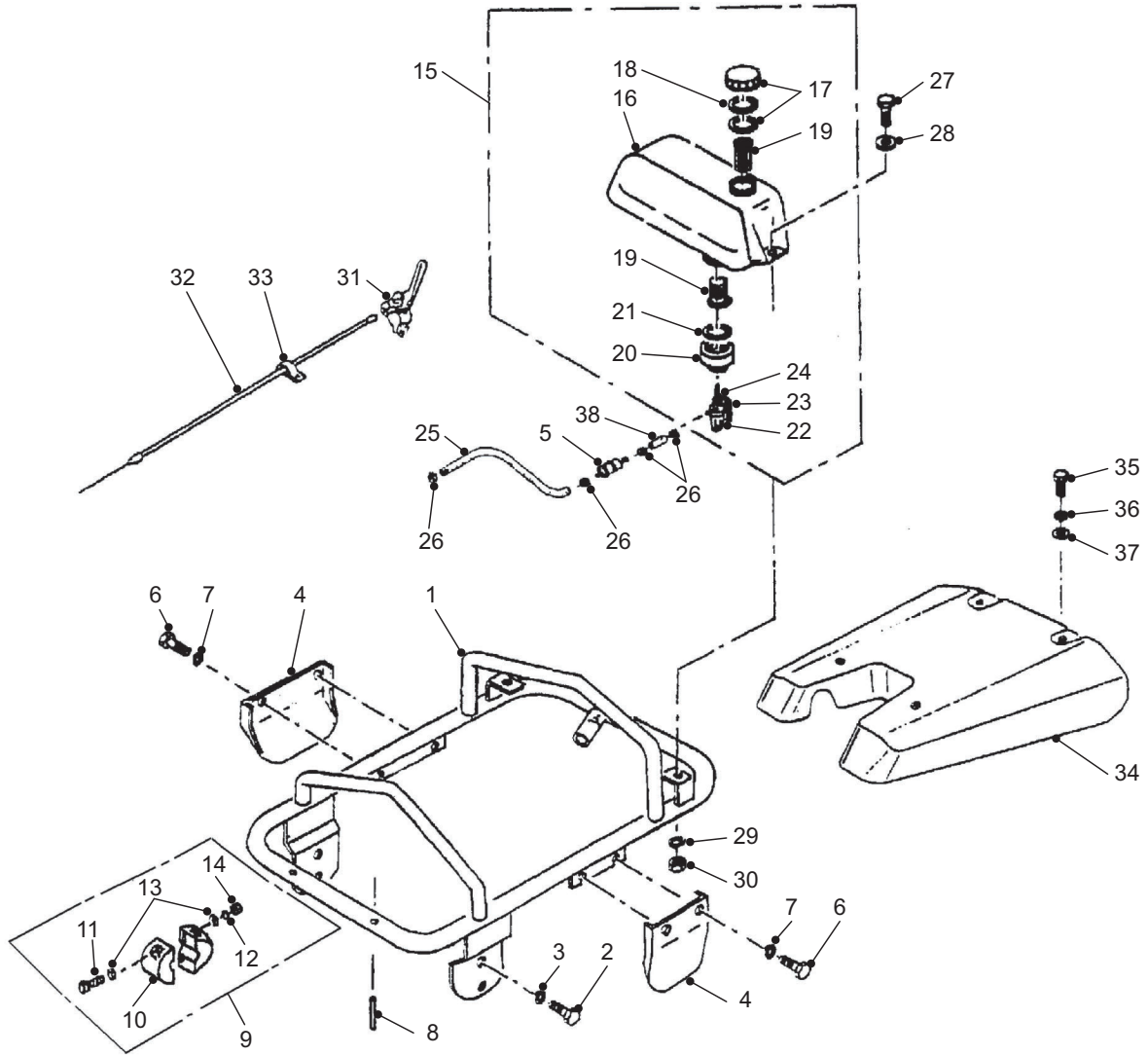
PC000045

Handle Section

**Section
03-01-01**

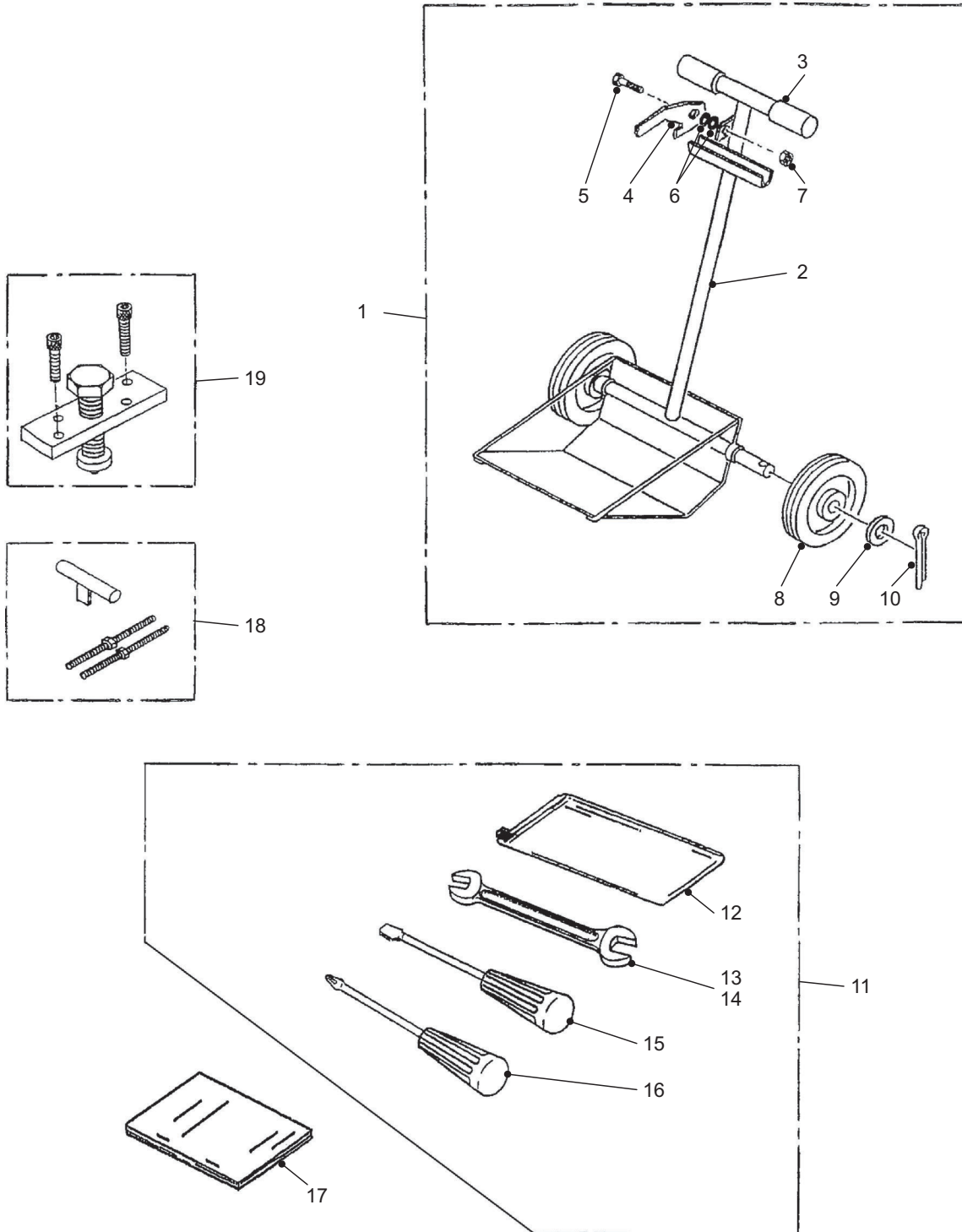
Item	Part Number	Denomination	Remarks	Serial Number	Qty
1	13201439	Operation Handle			1
2	59832535	Bolt			4
3	59831925	Spring Washer			4
4	13201447	Side Protector			2
5	59188219	Strainer			1
6	59188144	Bolt			4
7	59831925	Spring Washer			4
8	59237412	Spring Pin			2
9	59237420	Guide Roller Assembly	Includes Ref. 10 - 14		2
10	59237438	Guide Roller			4
11	59406504	Bolt			4
12	59833350	Spring Washer			4
13	59832188	Washer			8
14	59405514	Nut			4
15	54680418	Fuel Tank Assembly	Includes Ref. 16 - 24		1
16	54680426	Fuel Tank			1
17	13202122	Fuel Tank Cap CP			1
18	54680442	Packing			1
19	59853358	Fuel Filter			2
20	59188185	Cap			1
21	59188193	Packing			1
22	59188201	Fuel Strainer			1
23	59841684	Locknut			1
24	59841692	O-ring			1
25	59841700	Rubber Pipe			1
26	59188243	Hose Clamp			4
27	59953935	Bolt			2
28	58898230	Washer			2
29	59831925	Spring Washer			2
30	59831917	Nylon Nut			2
31	59830315	Throttle Lever			1

Recurrence of previous drawing



PC000045

Carrying Cart And Tools

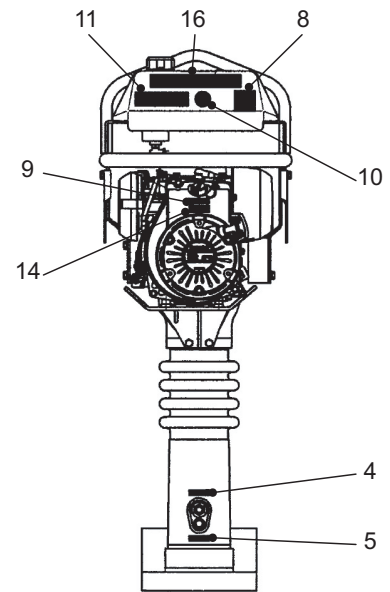
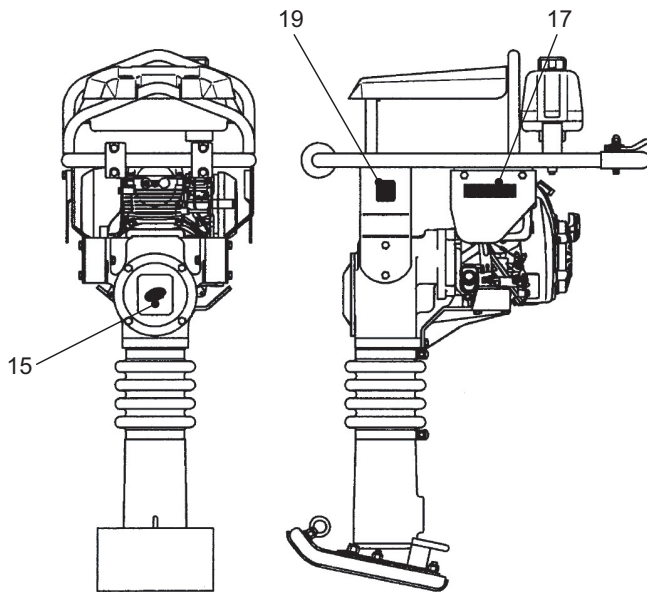
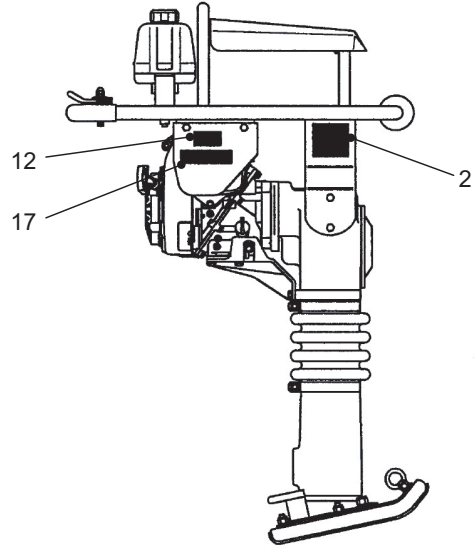
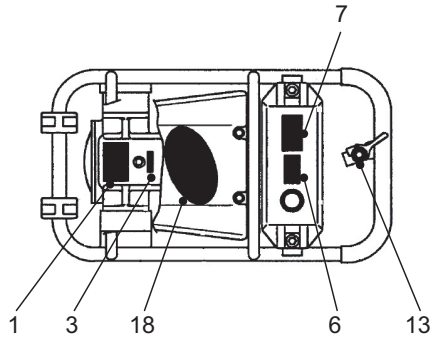


PC000046

Carrying Cart And Tools

**Section
03-01-02**

Item	Part Number	Denomination	Remarks	Serial Number	Qty
1	54680558	Carrying Cart Assembly	Includes Ref. 2 - 10		1
2	54680566	Cart Body			1
3	59840496	Grip			2
4	59188342	Stopper			1
5	59952325	Bolt			1
6	59188359	Friction Spring			2
7	59832931	Nut			1
8	59843706	Tire & Wheel Assembly			2
9	59839159	Washer			2
10	59840579	Cotter Pin			2
11	13200795	Tool Kit	Includes Ref. 12 - 16		1
12	59839050	Tool Bag			1
13	59830018	Double Ended Spanner			1
14	59830000	Double Ended spanner			1
15	59838805	Slotted Screwdriver			1
16	59840637	Cross Slot Screwdriver			1
17	80025927	Operation & Maintenance Manual	(EN-FR-DE-IT-ES-NL-PT)		1
	80025935	Operation & Maintenance Manual	(EN-DA-FI-NO-SE)		1
	80025943	Parts Manual			1
18	59842153	Disassembling Tool			1
19	59843136	Clutch Puller			1



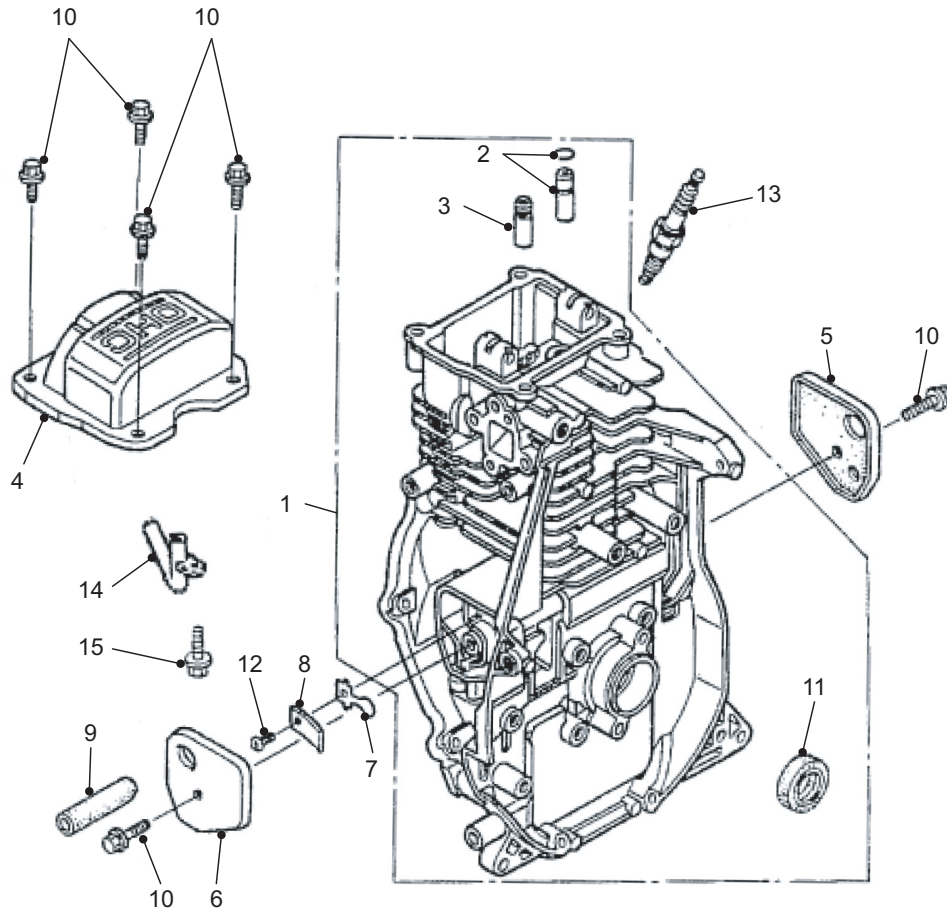
PC000047

Decals

**Section
04-01-01**

Item	Part Number	Denomination	Remarks	Serial Number	Qty
	13201462	Decal Kit	Includes Ref. 1 - 19		1
1	59188011	Name Plate			1
2	54680483	Decal: Oil Caution			1
3	59839654	Decal: Oil Feed			1
4	59839662	Decal: Oil Gauge			1
5	59840306	Decal: Drain			1
6	59188276	Decal: Gasoline			1
7	54683180	Decal: PL Caution			1
8	59188292	Decal: Oil Level			1
9	13200811	Lable, Stop			1
10	59188300	Lable, Caution			1
11	59188318	Decal: Drawing/Warning			1
12	54680509	Decal: Warning			1
13	59841767	Lable, High-Low			1
14	54680517	Decal: Engine RPM			1
15	54680525	Decal: IR Emblem			1
16	54680533	Decal: IR Logo			1
17	13201454	Decal: RX-264H			2
18	54679170	decal, IR emblem			1
19	13200829	Lable, Noise			1

Cylinder Head



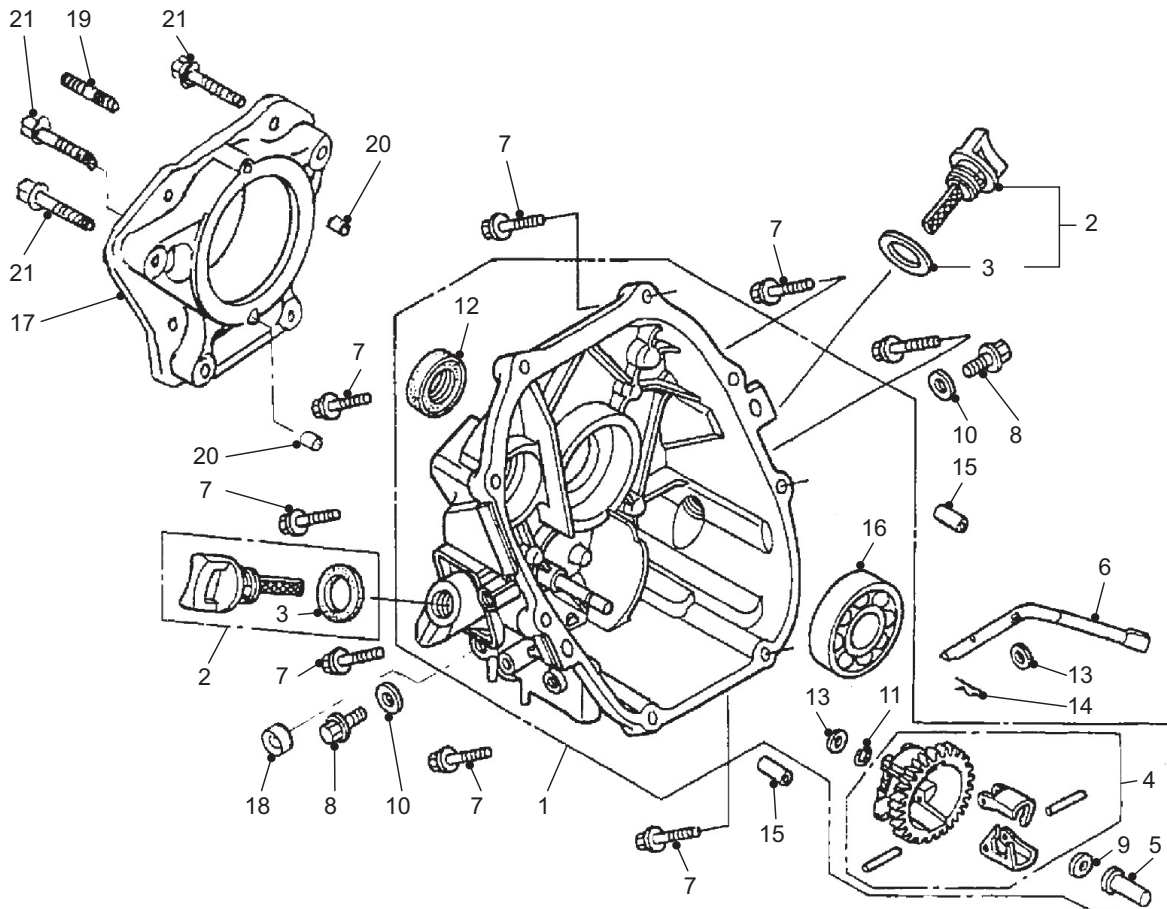
PC000048

Cylinder Head

Section
05-01-01

Item	Part Number	Denomination	Remarks	Serial Number	Qty
1	22327977	Cylinder Barrel Assembly	Includes Ref 2 + 3 + 11		1
2	22327985	Exhaust Valve Guide Assembly (OS)			1
3	22327993	Inlet Valve Guide (OS)			1
4	22328009	Head Cover			1
5	22328017	Breather Cover CPA			1
6	22328025	Breather Cover CPB			1
7	22328033	Oil Outlet Valve			1
8	22328041	Stopper Plate			1
9	22328058	Breather Tube			1
10	59243709	Flange Bolt			1
11	22328066	Oil Seal			1
12	22328074	Pan Screw			1
13	22328082	Spark Plug			1
14	22328090	Breather Pipe			1
15	22328108	Bolt			1

Crank Case Cover



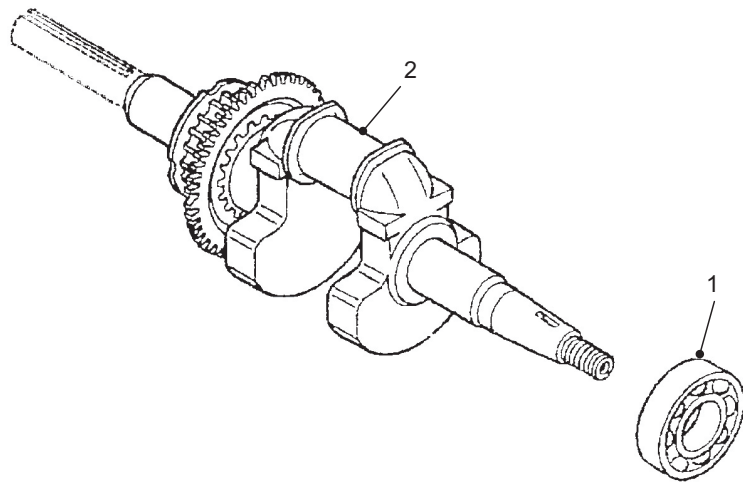
PC000049

Crank Case Cover

Section
05-01-02

Item	Part Number	Denomination	Remarks	Serial Number	Qty
1	22328116	Crank Case Cover Assembly	Includes Ref. 11 - 13 + 16		1
2	22328124	Oil Filler Cap Assembly	Includes Item 3		1
3	59243691	Packing	Oil Filler Cap Packing		1
4	22328132	Governor Assembly			1
5	59243352	Slider			1
6	22328140	Governor Shaft Arm			1
7	59244665	Flange Bolt			8
8	59243378	Drain Plug			1
9	59243386	Thrust Washer			1
10	59243394	Washer			1
11	59243600	Clip			1
12	22328066	Oil Seal			1
13	59243634	Washer			2
14	59243642	Lockpin			1
15	22328157	Knock Pin			2
16	22328165	Radial Ball Bearing			1
17	22328173	P.T.O. Flange			1
18	22328181	Oil Seal			1
19	13201405	Stud Bolt			4
20	22328199	Knock Pin			2
21	22328207	Flange Bolt			4

Crankshaft



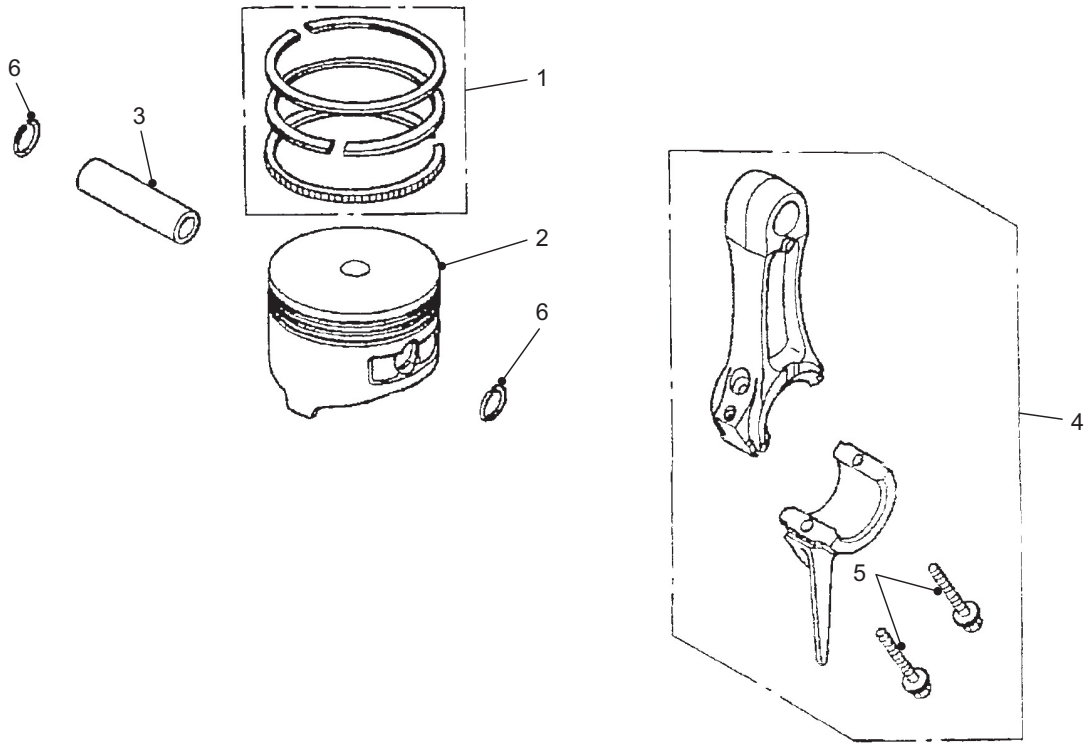
PC000050

Crankshaft

Section
05-01-03

Item	Part Number	Denomination	Remarks	Serial Number	Qty
1	22328215	Radial Ball Bearing			1
2	22328223	Crankshaft CP			1

Piston



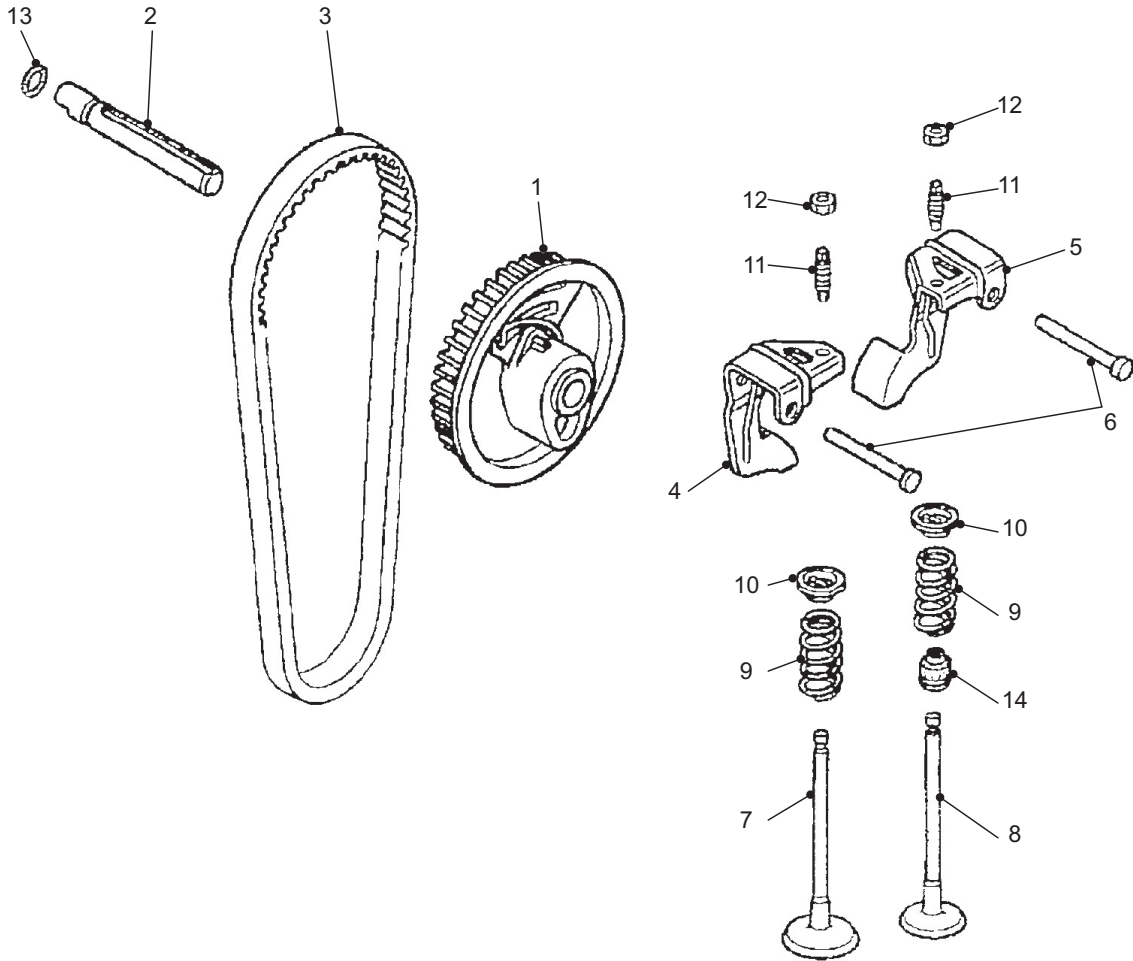
PC000051

Piston

**Section
05-01-04**

Item	Part Number	Denomination	Remarks	Serial Number	Qty
1	22328231	Piston Ring Set			1
2	22328249	Piston			1
3	59243808	Piston Pin			1
4	22328256	Connecting Rod Assembly	Includes Ref. 5		1
5	22328264	Connecting Rod Bolt			2
6	59243832	Clip			2

Camshaft

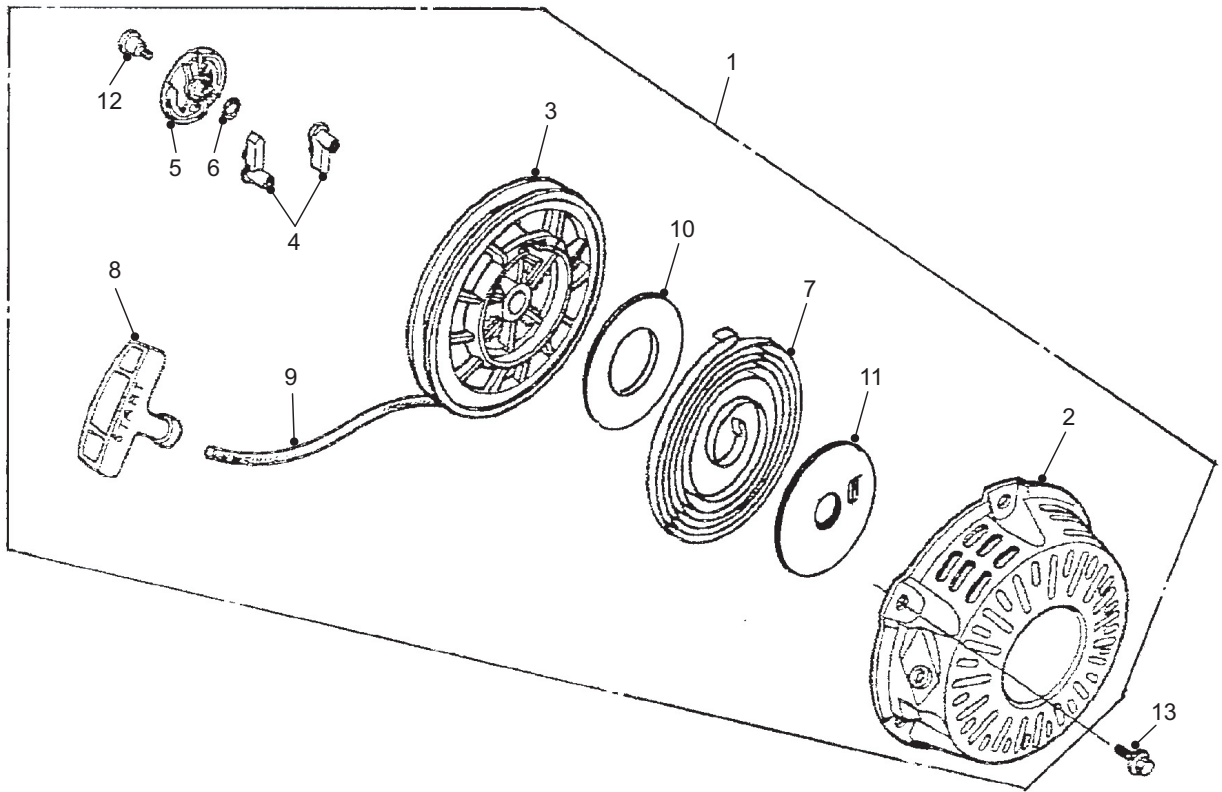


PC000052

Camshaft

**Section
05-01-05**

Item	Part Number	Denomination	Remarks	Serial Number	Qty
1	22328272	Camshaft Pulley CP			1
2	22328280	Camshaft Pulley			1
3	22328298	Timing Belt			1
4	22328306	Intake Valve Rocker Arm			1
5	22328314	Exhaust Valve Rocker Arm			1
6	22328322	Rocker Arm Shaft			2
7	22328330	Intake Valve			1
8	22328348	Exhaust Valve			1
9	22328355	Valve Spring			2
10	22328363	Valve Spring Retainer			2
11	22328371	Tappet Adjusting Screw			2
12	22328389	Tappet Adjusting Nut			2
13	22328397	O-ring			1
14	22328405	Valve Stem Seal			1



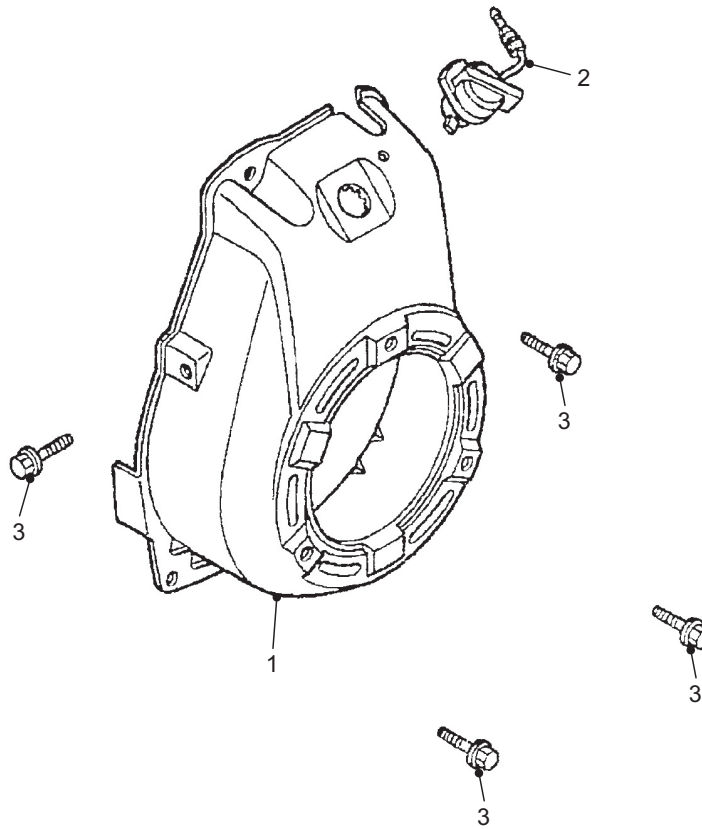
PC000053

Starter

Section
05-01-06

Item	Part Number	Denomination	Remarks	Serial Number	Qty
1	22328413	Recoil Starter Assembly	Includes Ref. 2 - 12		1
2	22328421	Recoil Starter Case CP			1
3	22328439	Recoil Starter Reel			1
4	22328447	Starter Ratchet			2
5	22328454	Ratchet Guide			1
6	22328462	Friction Spring			1
7	59244053	Starter Spring			1
8	59244079	Starter Knob			1
9	22328470	Recoil Starter Rope			1
10	22328488	Side Plate			1
11	22328496	Side Plate			1
12	59244095	Setting Screw			1
13	59244103	Flange Bolt			3

Fan Cover



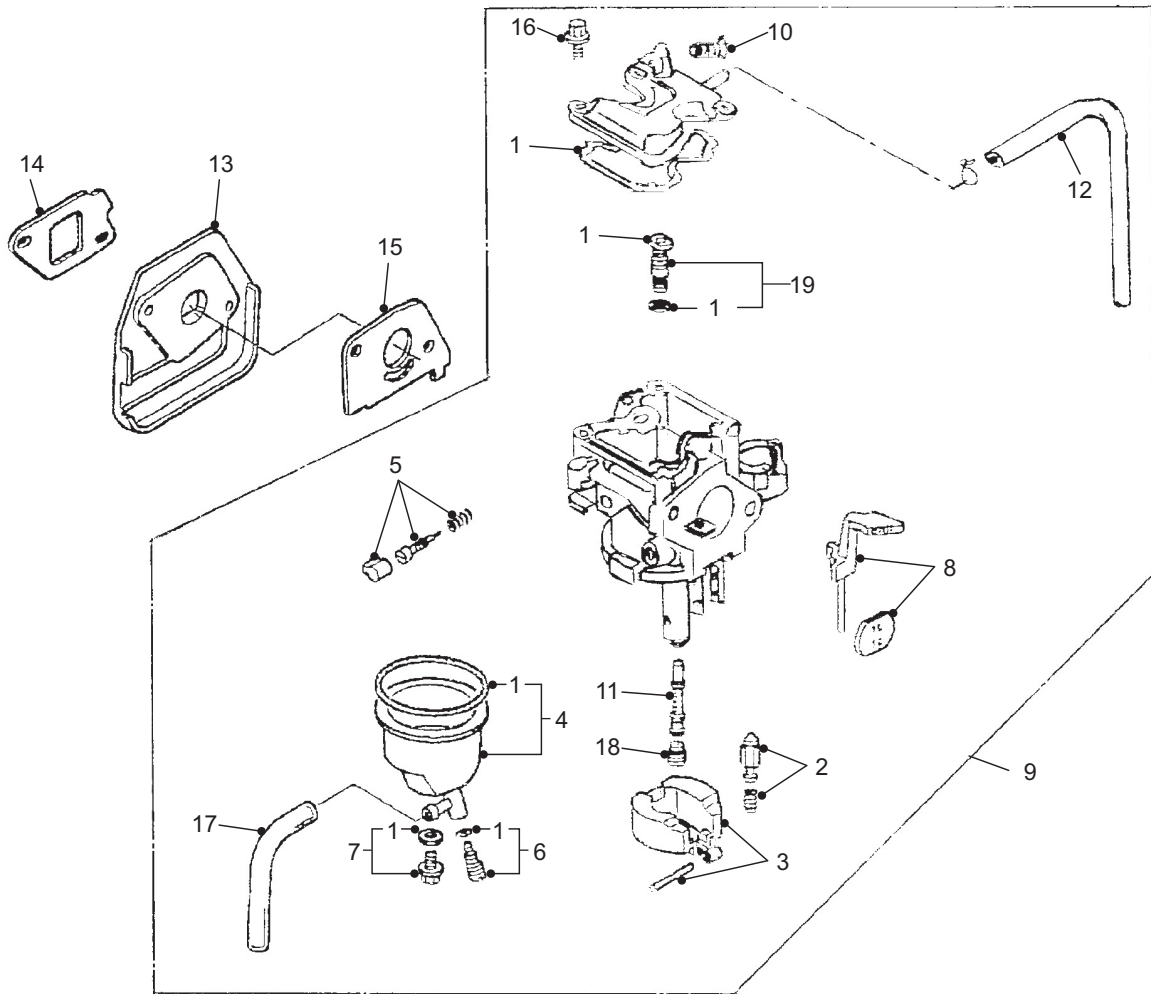
PC000054

Fan Cover

**Section
05-01-07**

Item	Part Number	Denomination	Remarks	Serial Number	Qty
1	22328504	Fan Cover CP			1
2	59244145	Engine Stop Switch			1
3	59243709	Flange Bolt			1

Carburetor



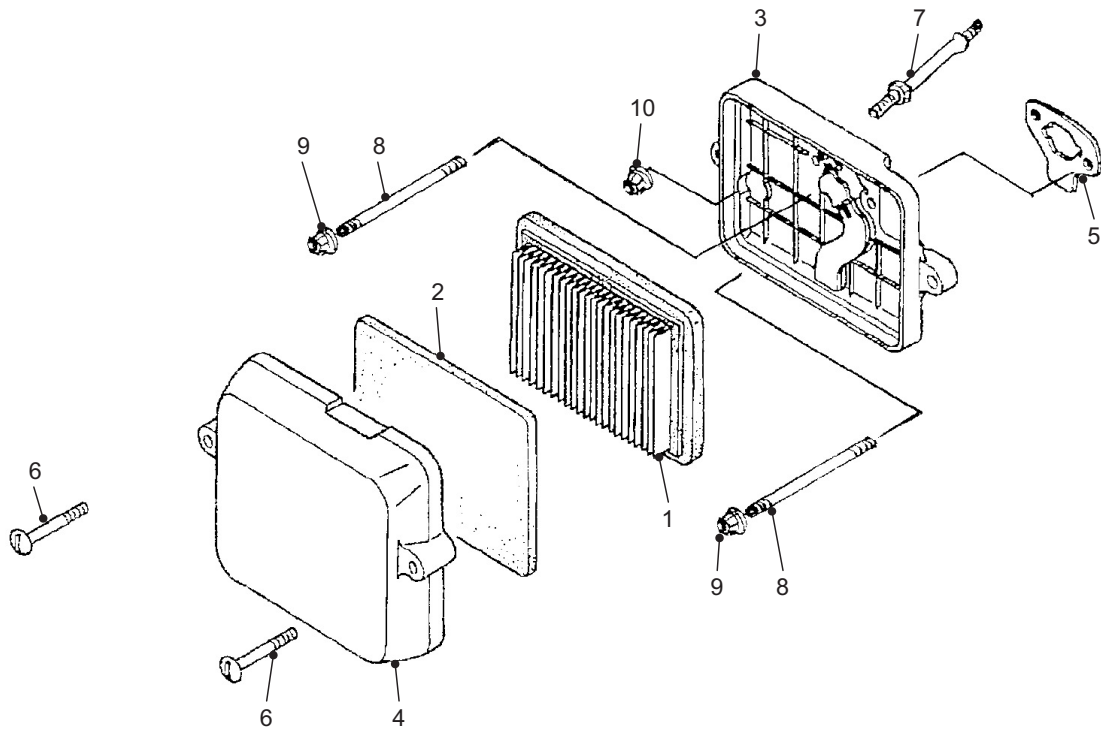
PC000055

Carburetor

Section
05-01-08

Item	Part Number	Denomination	Remarks	Serial Number	Qty
1	22328512	Gasket Set			1
2	59244186	Float Valve Set			1
3	22328520	Float Set			1
4	22328538	Float Chamber Set			1
5	22328546	Set Screw			1
6	22328553	Drain Screw Set			1
7	22328561	Screw Set			1
8	22328579	Choke Lever Set			1
9	22328587	Carburetor Assembly	Includes Ref. 1 - 8 + 11 + 12 + 16 - 19		1
10	54475140	Throttle Stop Screw			1
11	22328595	Main Nozzle			1
12	22328603	Bent Tube			1
13	22328611	Carburetor Insulator			1
14	22328629	Insulator Packing			1
15	22328637	Carburetor Packing			1
16	22328645	Screw Washer			4
17	22328678	Vinyl Tube			1
18	22328686	Main Jet #60			1
19	22328694	Pilot Jet Set #35			1

Air Cleaner



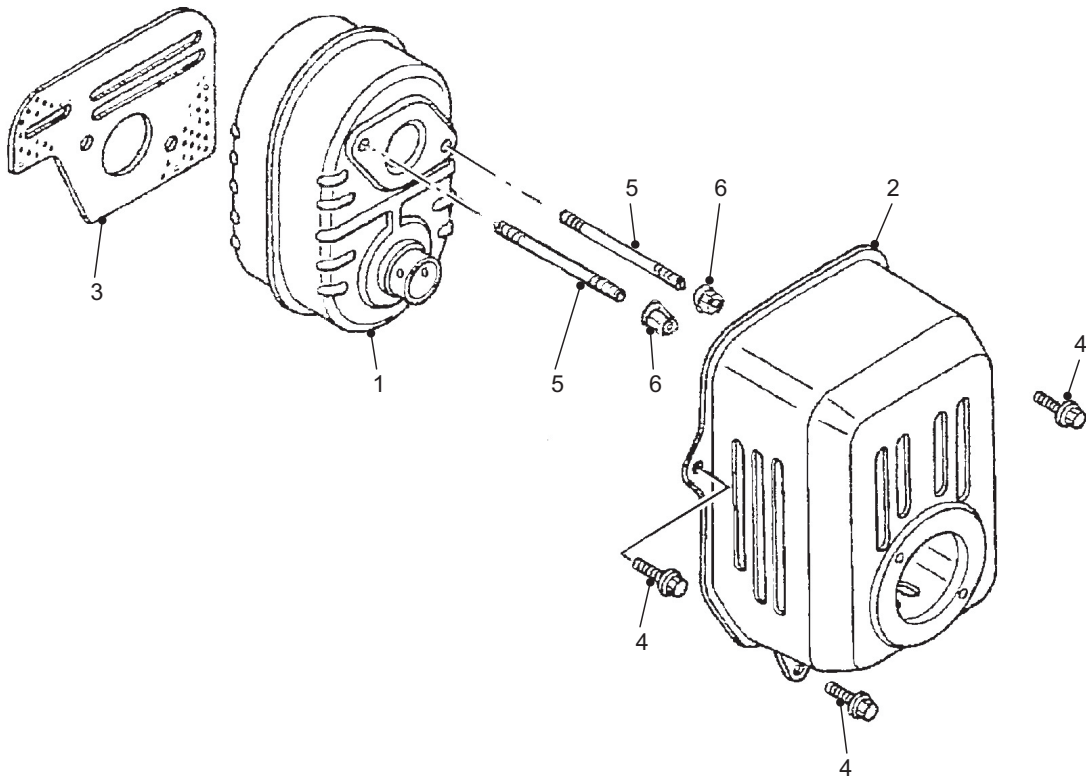
PC000056

Air Cleaner

Section
05-01-09

Item	Part Number	Denomination	Remarks	Serial Number	Qty
1	22328702	Air Cleaner Inner Filter			1
2	22328710	Air Cleaner Outer Filter			1
3	22328728	Air Cleaner Case CP			1
4	22328736	Air Cleaner Cover			1
5	22328744	Air Cleaner Packing			1
6	22328751	Air Cleaner Cover Bolt			2
7	22328769	Stud Bolt			1
8	22328777	Stud Bolt			2
9	22328785	Flange Nut			2
10	59244418	Flange Nut			1

Muffler



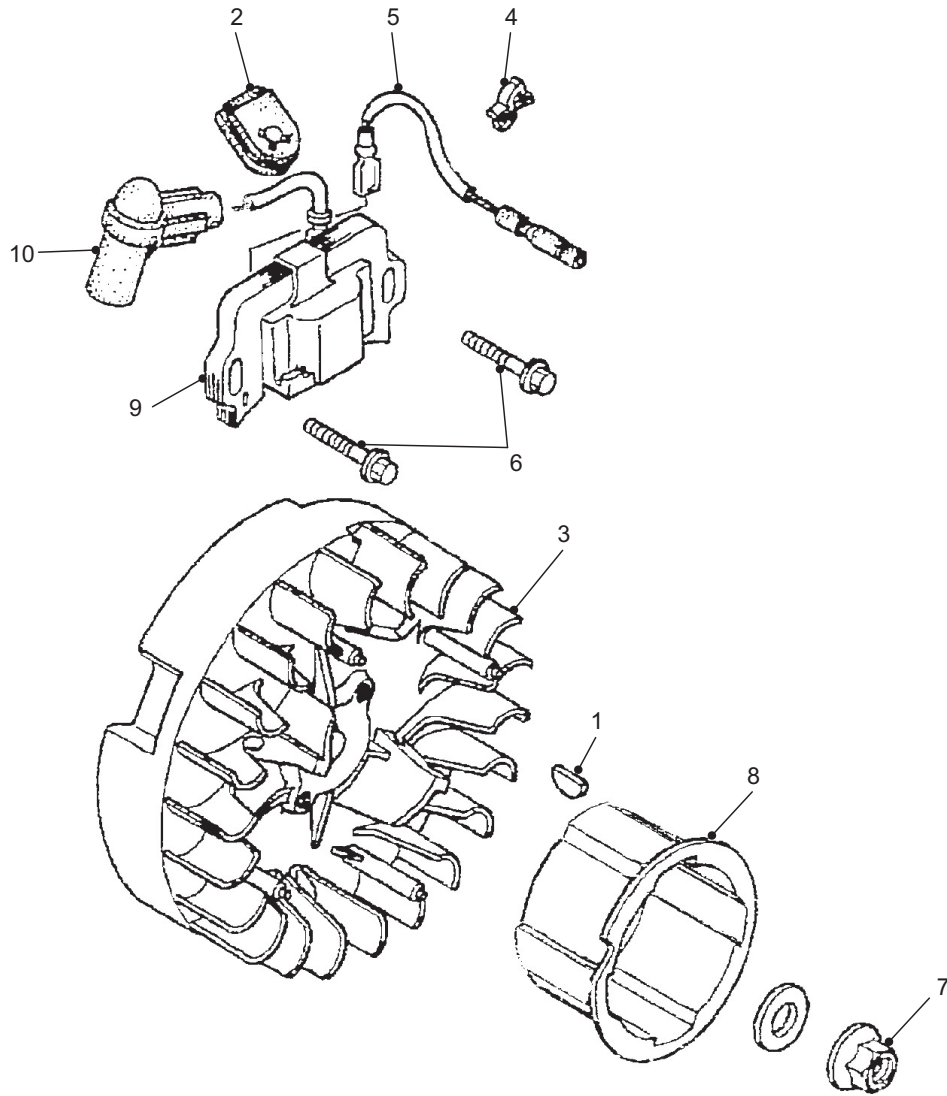
PC000057

Muffler

**Section
05-01-10**

Item	Part Number	Denomination	Remarks	Serial Number	Qty
1	22328793	Muffler			1
2	22328801	Muffler Protector			1
3	22328819	Muffler Gasket			1
4	59243709	Flange Bolt			1
5	22328827	Stud Bolt			2
6	22328835	Self-locking Nut			2

Flywheel

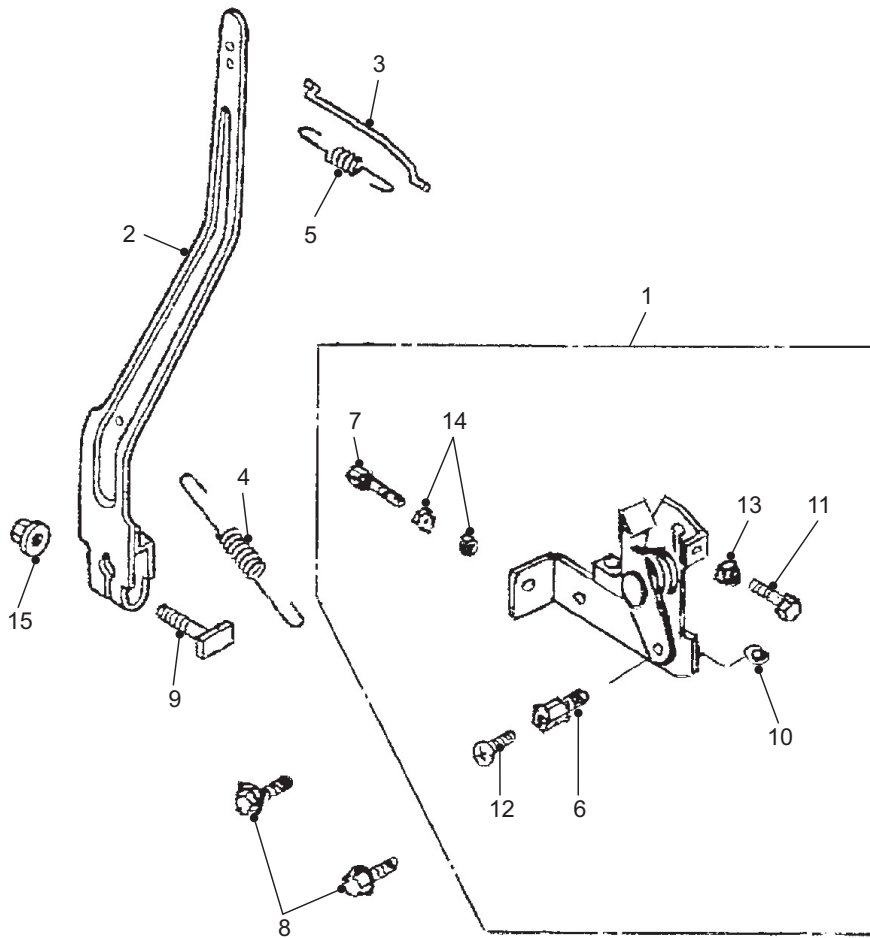


PC000058

Flywheel

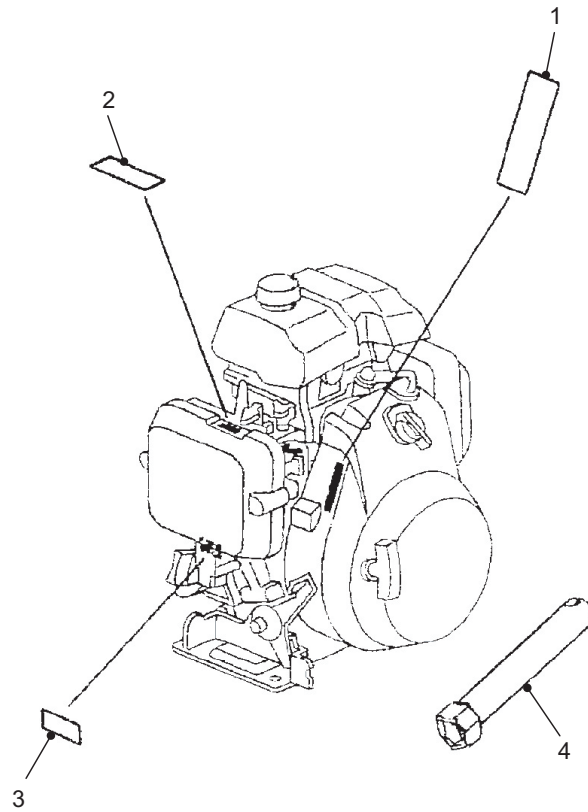
**Section
05-01-11**

Item	Part Number	Denomination	Remarks	Serial Number	Qty
1	22328843	Key			1
2	22328850	Cord Grommet			1
3	22328868	Flywheel CP			1
4	22328876	High Tension Cord Clip			1
5	22328884	Stop Switch Cord			1
6	59244764	Flange Bolt			2
7	22328892	Flange Nut			1
8	22328900	Starter Pulley			1
9	22328918	Ignition Coil Assembly			1
10	22328926	High Tension Terminal Assemnly			1



PC000059

Fuel Tank



PC000060

Fuel Tank

Section
05-01-13

Item	Part Number	Denomination	Remarks	Serial Number	Qty
1	22329023	Emblem			1
2	22329031	Choke Mark			1
3	22329049	Type Mark			1
4	22329056	Spark Plug Wrench			1

Intentionally left blank

WORD INDEX

A

Air Cleaner Case CP	41
Air Cleaner Cover Bolt	41
Air Cleaner Inner Filter	3, 41
Air Cleaner Outer Filter	3, 41
Air Cleaner Packing	41

B

Ball Bearing	9
Bellows	13
Bent Tube	39
Bolt	9, 13, 17, 21, 25
Breather Cover CPA	25
Breather Cover CPB	25
Breather Pipe	25
Breather Tube	25
Bushing	9

C

Cable Adjusting Bolt	47
Camshaft Pulley CP	33
Cap	17
Carburetor Assembly	39
Carburetor Insulator	39
Carburetor Packing	39
Carrying Cart Assembly	21
Cart Body	21
Choke Lever Set	39
Choke Mark	49
Circlip	47
Clamp	17
Clip	27, 31
Clutch Assembly	9
Clutch Boss	9
Clutch Drum	9
Clutch Lining Shoe	9
Clutch Puller	21
Clutch Spring	9
Coil Spring Assembly	13
Collar	9
Connecting Rod Assembly	31
Connecting Rod Bolt	31
Control Assembly	47
Cord Grommet	45
Cotter Pin	21
Crackcase CP	9
Crank Case Cover Assembly	27
Crank Gear	9
Crank Rod	9
Crank Rod Assembly	9

Crankcase	9
Crankcase Cover	9
Crankshaft CP	29
Cross Slot Screwdriver	21
Cylinder Barrel Assembly	25

D

Decal Kit	23
Decal: Drain	23
Decal: Drawing/Warning	23
Decal: Engine RPM	23
Decal: Gasoline	23
Decal: IR Emblem	23
Decal: IR Logo	23
Decal: Oil Caution	23
Decal: Oil Feed	23
Decal: Oil Gauge	23
Decal: Oil Level	23
Decal: PL Caution	23
Decal: RX-264H	23
Decal: Warning	23
Disassembling Tool	21
Double Ended Spanner	21
Drain Plug	27
Drain Screw Set	39

E

Emblem	49
Engine Cover	17
Engine Stop Switch	5, 37
Engine Support	9
Exhaust Valve	7, 33
Exhaust Valve Guide Assembly (OS)	25
Exhaust Valve Rocker Arm	33
Eye Nut	13

F

Fan Cover CP	37
Flange Nut	9, 41, 45, 47
Float Chamber Set	39
Float Set	39
Float Valve Set	39
Flush Bolt	13
Flush Bolt Assembly	13
Flywheel CP	45
Foot Block	13
Foot Plate & Bolt Assembly	13
Foot Plate Assembly (Optional)	13
Foot Plate Assembly (Standard)	13
Frame	5
Friction Spring	21, 35

Fuel Strainer	3, 17	Nylon Plug	13
Fuel Tank	17	O	
Fuel Tank Assembly	17	Oil Filler Cap Assembly	3, 27
Fuel Tank Cap	3	Oil Gauge	5, 13
Fuel Tank Cap CP	17	Oil Outlet Valve	25
G		Oil Seal	9, 25, 27
Gasket Set	39	Operation & Maintenance Manual	21
Governor Arm CP	47	Operation Handle	17
Governor Assembly	27	O-ring	9, 13, 17, 33
Governor Rod	47	O-ring Washer	9
Governor Shaft Arm	27	P	
Governor Spring	47	P.T.O. Flange	27
Grip	21	Pan Screw	25, 47
Guide Plate (A)	9	Parts Manual	21
Guide Plate (B)	9	Pilot Jet Set #35	39
Guide Roller	17	Pinion Gear	9
Guide Roller Assembly	17	Pipe Protector	13
H		Pipe Protector Assembly	13
Head Cover	25	Piston	13, 31
High Tension Terminal Assemnly	45	Piston Guide	13
Honda Engine	9	Piston Pin	31
Hose Clamp	17	Piston Ring Set	31
I		Plug	9, 13
Ignition Coil Assembly	45	R	
Insulator Packing	39	Radial Ball Bearing	27, 29
Intake Valve	7, 33	Ratchet Guide	35
Intake Valve Rocker Arm	33	Recessed Bolt	47
K		Recoil Starter Assembly	35
Key	9, 45	Recoil Starter Case CP	35
Knock Pin	27	Recoil Starter Reel	35
L		Recoil Starter Rope	3, 35
Lable, Caution	23	Rocker Arm Shaft	33
Lable, Noise	23	Rubber Buffer	9
Lable, Stop	23	Rubber Pipe	17
Large Coil Spring	13	S	
Lifting Handle	13	Screw	9
Locknut	17	Screw Washer	39
Lockpin	27	Self-locking Nut	43
Lockwasher	13	Set Screw	39
Lower Cylinder	13	Setting Screw	35
Lower Damper	13	Side Plate	35
M		Side Protector	17
Main Jet #60	39	Slider	27
Muffler	7, 43	Slotted Screwdriver	21
Muffler Gasket	43	Small Coil Spring	13
Muffler Protector	43	Snap Ring	9
N		Socket Head Bolt	13
Name Plate	23	Spark Plug	25
		Spark Plug Wrench	49
		Spring Pin	17

Spring Washer (Wave)	13
Starter Knob	3, 35
Starter Pulley	45
Starter Ratchet	35
Starter Spring	35
Stop Switch Cord	45
Stopper	21
Stopper Plate	25
Strainer	17
Stud Bolt	9, 27, 41, 43

T

Tappet Adjusting Nut	33
Throttle Cable	5, 17
Throttle Lever	5, 17
Throttle Return Spring	47
Throttle Stop Screw	39
Thrust Washer	27
Timing Belt	3, 33
Tire & Wheel Assembly	21
Tool Bag	21
Tool Kit	21
Type Mark	49

U

Upper Cylinder	13
--------------------------	----

V

Valve Spring	33
Valve Stem Seal	33
Vinyl Tube	39

W

Washer	9, 13, 17, 21, 27
Wire Holder	47
Woodruff Key	9

NUMERICAL INDEX

Part Number	Denomination	WAS	Page	Subgroup
			21	Carrying Cart And Tools
13200811	Lable, Stop		23	Decals
13200829	Lable, Noise		23	Decals
13201397	Honda Engine		9	Upper Section And Engine
13201405	Stud Bolt		9 27	Upper Section And Engine Crank Case Cover
13201413	Flange Nut		9	Upper Section And Engine
13201421	Engine Support		9	Upper Section And Engine
13201439	Operation Handle		17	Handle Section
13201447	Side Protector		17	Handle Section
13201454	Decal: RX-264H		23	Decals
13201462	Decal Kit		23	Decals
13201470	Rubber Pipe		17	Handle Section
13202114	Foot Block		13	Lower Section
13202122	Fuel Tank Cap CP		17	Handle Section
22327977	Cylinder Barrel Assembly		25	Cylinder Head
22327985	Exhaust Valve Guide Assembly (25	Cylinder Head
22327993	Inlet Valve Guide (OS)		25	Cylinder Head
22328009	Head Cover		25	Cylinder Head
22328017	Breather Cover CPA		25	Cylinder Head
22328025	Breather Cover CPB		25	Cylinder Head
22328033	Oil Outlet Valve		25	Cylinder Head
22328041	Stopper Plate		25	Cylinder Head
22328058	Breather Tube		25	Cylinder Head
22328066	Oil Seal		25 27	Cylinder Head Crank Case Cover
22328074	Pan Screw		25	Cylinder Head
22328082	Spark Plug		25	Cylinder Head
22328090	Breather Pipe		25	Cylinder Head
22328108	Bolt		25	Cylinder Head
22328116	Crank Case Cover Assembly		27	Crank Case Cover
22328124	Oil Filler Cap Assembly		3 27	Recommended Service Parts Crank Case Cover
22328132	Governor Assembly		27	Crank Case Cover
22328140	Governor Shaft Arm		27	Crank Case Cover
22328157	Knock Pin		27	Crank Case Cover
22328165	Radial Ball Bearing		27	Crank Case Cover
22328173	P.T.O. Flange		27	Crank Case Cover
22328181	Oil Seal		27	Crank Case Cover
22328199	Knock Pin		27	Crank Case Cover
22328207	Flange Bolt		27	Crank Case Cover

Part Number	Denomination	WAS	Page	Subgroup
22328223	Crankshaft CP		29	Crankshaft
22328231	Piston Ring Set		31	Piston
22328249	Piston		31	Piston
22328256	Connecting Rod Assembly		31	Piston
22328264	Connecting Rod Bolt		31	Piston
22328272	Camshaft Pulley CP		33	Camshaft
22328280	Camshaft Pulley		33	Camshaft
22328298	Timing Belt		3 33	Recommended Service Parts Camshaft
22328306	Intake Valve Rocker Arm		33	Camshaft
22328314	Exhaust Valve Rocker Arm		33	Camshaft
22328322	Rocker Arm Shaft		33	Camshaft
22328330	Intake Valve		7 33	Recommended Service Parts Camshaft
22328348	Exhaust Valve		7 33	Recommended Service Parts Camshaft
22328355	Valve Spring		33	Camshaft
22328363	Valve Spring Retainer		33	Camshaft
22328371	Tappet Adjusting Screw		33	Camshaft
22328389	Tappet Adjusting Nut		33	Camshaft
22328397	O-ring		33	Camshaft
22328405	Valve Stem Seal		33	Camshaft
22328413	Recoil Starter Assembly		35	Starter
22328421	Recoil Starter Case CP		35	Starter
22328439	Recoil Starter Reel		35	Starter
22328447	Starter Ratchet		35	Starter
22328454	Ratchet Guide		35	Starter
22328462	Friction Spring		35	Starter
22328470	Recoil Starter Rope		3 35	Recommended Service Parts Starter
22328488	Side Plate		35	Starter
22328496	Side Plate		35	Starter
22328504	Fan Cover CP		37	Fan Cover
22328512	Gasket Set		39	Carburetor
22328520	Float Set		39	Carburetor
22328538	Float Chamber Set		39	Carburetor
22328546	Set Screw		39	Carburetor
22328553	Drain Screw Set		39	Carburetor
22328561	Screw Set		39	Carburetor
22328579	Choke Lever Set		39	Carburetor
22328587	Carburetor Assembly		39	Carburetor
22328595	Main Nozzle		39	Carburetor
22328603	Bent Tube		39	Carburetor

Part Number	Denomination	WAS	Page	Subgroup
22328629	Insulator Packing		39	Carburetor
22328637	Carburetor Packing		39	Carburetor
22328645	Screw Washer		39	Carburetor
22328678	Vinyl Tube		39	Carburetor
22328686	Main Jet #60		39	Carburetor
22328694	Pilot Jet Set #35		39	Carburetor
22328702	Air Cleaner Inner Filter		3 41	Recommended Service Parts Air Cleaner
22328710	Air Cleaner Outer Filter		3 41	Recommended Service Parts Air Cleaner
22328728	Air Cleaner Case CP		41	Air Cleaner
22328736	Air Cleaner Cover		41	Air Cleaner
22328744	Air Cleaner Packing		41	Air Cleaner
22328751	Air Cleaner Cover Bolt		41	Air Cleaner
22328769	Stud Bolt		41	Air Cleaner
22328777	Stud Bolt		41	Air Cleaner
22328785	Flange Nut		41	Air Cleaner
22328793	Muffler		7 43	Recommended Service Parts Muffler
22328801	Muffler Protector		43	Muffler
22328819	Muffler Gasket		43	Muffler
22328827	Stud Bolt		43	Muffler
22328835	Self-locking Nut		43	Muffler
22328843	Key		45	Flywheel
22328850	Cord Grommet		45	Flywheel
22328868	Flywheel CP		45	Flywheel
22328876	High Tension Cord Clip		45	Flywheel
22328884	Stop Switch Cord		45	Flywheel
22328892	Flange Nut		45	Flywheel
22328900	Starter Pulley		45	Flywheel
22328918	Ignition Coil Assembly		45	Flywheel
22328926	High Tension Terminal Assemnl		45	Flywheel
22328934	Control Assembly		47	Control
22328942	Governor Arm CP		47	Control
22328959	Governor Rod		47	Control
22328967	Governor Spring		47	Control
22328975	Throttle Return Spring		47	Control
22328983	Cable Adjusting Bolt		47	Control
22328991	Recessed Bolt		47	Control
22329007	Nut		47	Control
22329015	Nut		47	Control
22329023	Emblem		49	Fuel Tank
22329031	Choke Mark		49	Fuel Tank

Part Number	Denomination	WAS	Page	Subgroup
22329056	Spark Plug Wrench		49	Fuel Tank
54475025	Wire Holder		47	Control
54475066	Circlip		47	Control
54475074	Pan Screw		47	Control
54475140	Throttle Stop Screw		39	Carburetor
54679170	decal, IR emblem		23	Decals
54680145	Crackcase CP		9	Upper Section And Engine
54680152	Crankcase Cover		9	Upper Section And Engine
54680160	Clutch Drum		9	Upper Section And Engine
54680178	Pinion Gear		9	Upper Section And Engine
54680186	Ball Bearing		9	Upper Section And Engine
54680202	Crank Gear		9	Upper Section And Engine
54680228	Clutch Assembly		9	Upper Section And Engine
54680236	Woodruff Key		9	Upper Section And Engine
54680244	Flange Nut		9	Upper Section And Engine
54680301	Upper Cylinder		13	Lower Section
54680319	Bellows		13	Lower Section
54680327	Band w/Nut		13	Lower Section
54680335	Coil Spring Assembly		13	Lower Section
54680343	Pipe Protector Assembly		13	Lower Section
54680350	Foot Plate & Bolt Assembly		13	Lower Section
54680368	Foot Plate Assembly (Standard)		13	Lower Section
54680376	Foot Plate Assembly (Optional)		13	Lower Section
54680384	Flush Bolt Assembly		13	Lower Section
54680392	Lifting Handle		13	Lower Section
54680418	Fuel Tank Assembly		17	Handle Section
54680426	Fuel Tank		17	Handle Section
54680434	Fuel Tank Cap		3	Recommended Service Parts
54680442	Packing		17	Handle Section
54680459	Throttle Cable		5 17	Recommended Service Parts Handle Section
54680467	Clamp		17	Handle Section
54680483	Decal: Oil Caution		23	Decals
54680509	Decal: Warning		23	Decals
54680517	Decal: Engine RPM		23	Decals
54680525	Decal: IR Emblem		23	Decals
54680533	Decal: IR Logo		23	Decals
54680558	Carrying Cart Assembly		21	Carrying Cart And Tools
54680566	Cart Body		21	Carrying Cart And Tools
54680582	Engine Cover		17	Handle Section
54683180	Decal: PL Caution		23	Decals
58836552	Foot Plate Assembly (optional)		13	Lower Section

Part Number	Denomination	WAS	Page	Subgroup
58836638	Oil Seal		9	Upper Section And Engine
58836651	Collar		9	Upper Section And Engine
58836677	Collar		9	Upper Section And Engine
58836685	Snap Ring		9	Upper Section And Engine
58836727	Crank Rod Assembly		9	Upper Section And Engine
58836735	Bushing		9	Upper Section And Engine
58836750	Piston		13	Lower Section
58836792	Crank Rod Pin		13	Lower Section
58836818	O-ring		13	Lower Section
58836842	O-ring		13	Lower Section
58836859	Large Coil Spring		13	Lower Section
58836867	Small Coil Spring		13	Lower Section
58836875	Piston Guide		13	Lower Section
58836883	Nut		13	Lower Section
58836891	Upper Damper		13	Lower Section
58836909	Lower Damper		13	Lower Section
58836917	Lower Cylinder		13	Lower Section
58836933	Oil Gauge		5 13	Recommended Service Parts Lower Section
58836958	Socket Head Bolt		13	Lower Section
58836966	Socket Head Bolt		13	Lower Section
58836974	Foot Plate Assembly (Optional)		13	Lower Section
58836982	Flush Bolt		13	Lower Section
58898230	Washer		17	Handle Section
59187849	O-ring Washer		9	Upper Section And Engine
59187856	O-ring		9	Upper Section And Engine
59187864	Screw		9	Upper Section And Engine
59187930	Clutch Lining Shoe		9	Upper Section And Engine
59187948	Clutch Boss		9	Upper Section And Engine
59187955	Clutch Spring		9	Upper Section And Engine
59187963	Guide Plate (A)		9	Upper Section And Engine
59187971	Guide Plate (B)		9	Upper Section And Engine
59188011	Name Plate		23	Decals
59188086	Flush Bolt		13	Lower Section
59188094	Eye Nut		13	Lower Section
59188102	Washer		13	Lower Section
59188144	Bolt		17	Handle Section
59188185	Cap		17	Handle Section
59188193	Packing		17	Handle Section
59188201	Fuel Strainer		3 17	Recommended Service Parts Handle Section
59188219	Strainer		17	Handle Section
59188243	Hose Clamp		17	Handle Section

Part Number	Denomination	WAS	Page	Subgroup
59188276	Decal: Gasoline		23	Decals
59188292	Decal: Oil Level		23	Decals
59188300	Lable, Caution		23	Decals
59188318	Decal: Drawing/Warning		23	Decals
59188342	Stopper		21	Carrying Cart And Tools
59188359	Friction Spring		21	Carrying Cart And Tools
59237388	Spring Washer (Wave)		13	Lower Section
59237412	Spring Pin		17	Handle Section
59237420	Guide Roller Assembly		17	Handle Section
59237438	Guide Roller		17	Handle Section
59239152	Ball Bearing		9	Upper Section And Engine
59239376	Rubber Buffer		9	Upper Section And Engine
59243352	Slider		27	Crank Case Cover
59243378	Drain Plug		27	Crank Case Cover
59243386	Thrust Washer		27	Crank Case Cover
59243394	Washer		27	Crank Case Cover
59243600	Clip		27	Crank Case Cover
59243634	Washer		27	Crank Case Cover
59243642	Lockpin		27	Crank Case Cover
59243691	Packing		27	Crank Case Cover
59243709	Flange Bolt		25 37 43 47	Cylinder Head Fan Cover Muffler Control
59243808	Piston Pin		31	Piston
59243832	Clip		31	Piston
59244053	Starter Spring		35	Starter
59244079	Starter Knob		3 35	Recommended Service Parts Starter
59244095	Setting Screw		35	Starter
59244103	Flange Bolt		35	Starter
59244145	Engine Stop Switch		5 37	Recommended Service Parts Fan Cover
59244186	Float Valve Set		39	Carburetor
59244418	Flange Nut		41 47	Air Cleaner Control
59244665	Flange Bolt		27	Crank Case Cover
59244764	Flange Bolt		45	Flywheel
59244772	Governor Arm Bolt		47	Control
59405514	Nut		17	Handle Section
59406504	Bolt		17	Handle Section
59830000	Double Ended spanner		21	Carrying Cart And Tools
59830018	Double Ended Spanner		21	Carrying Cart And Tools
59830315	Throttle Lever		5	Recommended Service Parts

Part Number	Denomination	WAS	Page	Subgroup
59831123	Plug		9 13	Upper Section And Engine Lower Section
59831131	Packing		9 13	Upper Section And Engine Lower Section
59831560	Lockwasher		13	Lower Section
59831917	Nylon Nut		17	Handle Section
59831925	Spring Washer		9 17	Upper Section And Engine Handle Section
59832188	Washer		17	Handle Section
59832535	Bolt		17	Handle Section
59832931	Nut		21	Carrying Cart And Tools
59833350	Spring Washer		17	Handle Section
59834721	Nylon Nut		13	Lower Section
59835371	Washer		9 17	Upper Section And Engine Handle Section
59837948	Snap Ring		9	Upper Section And Engine
59838334	O-ring		13	Lower Section
59838805	Slotted Screwdriver		21	Carrying Cart And Tools
59839050	Tool Bag		21	Carrying Cart And Tools
59839159	Washer		21	Carrying Cart And Tools
59839274	Ball Bearing		9	Upper Section And Engine
59839282	Snap Ring		9	Upper Section And Engine
59839332	Snap Ring		9	Upper Section And Engine
59839431	Ball Bearing		9	Upper Section And Engine
59839456	Snap Ring		9	Upper Section And Engine
59839654	Decal: Oil Feed		23	Decals
59839662	Decal: Oil Gauge		23	Decals
59839852	Key		9	Upper Section And Engine
59840140	Spring Washer		13	Lower Section
59840306	Decal: Drain		23	Decals
59840454	Nylon Nut		13	Lower Section
59840496	Grip		21	Carrying Cart And Tools
59840579	Cotter Pin		21	Carrying Cart And Tools
59840637	Cross Slot Screwdriver		21	Carrying Cart And Tools
59841239	Nylon Plug		13	Lower Section
59841460	O-ring		13	Lower Section
59841684	Locknut		17	Handle Section
59841692	O-ring		17	Handle Section
59841700	Rubber Pipe		17	Handle Section
59841767	Lable, High-Low		23	Decals
59842153	Disassembling Tool		21	Carrying Cart And Tools
59842708	Bolt		13	Lower Section
59843136	Clutch Puller		21	Carrying Cart And Tools

Part Number	Denomination	WAS	Page	Subgroup
59853358	Fuel Filter		3 17	Recommended Service Parts Handle Section
59951632	Spring Washer		13	Lower Section
59952325	Bolt		9 21	Upper Section And Engine Carrying Cart And Tools
59952382	Bolt		9	Upper Section And Engine
59953935	Bolt		17	Handle Section
80025927	Operation & Maintenance Manu		21	Carrying Cart And Tools
80025935	Operation & Maintenance Manu		21	Carrying Cart And Tools
80025943	Parts Manual		21	Carrying Cart And Tools
NSS	Crank Rod		9 13	Upper Section And Engine Lower Section