

**SECTION 17 - SPECIFICATIONS****ABSCHNITT 17 - SPEZIFIKATIONEN**

Contents	Page	Inhalt	Seite
SPECIFICATIONS	1	SPEZIFIKATIONEN	1
ENGINE RPM SETTINGS	1	MOTORDREHZAHL-EINSTELLUNGEN	1

**SPECIFICATIONS**

<b>MODEL</b>	RX-55
<b>WEIGHT</b>	121 pounds
<b>VIBRATION FREQUENCY</b>	550 to 600 RPM
<b>AMPLITUDE</b>	1.57 to 1.97 inches
<b>TRAVEL SPEED</b>	39 to 46 feet per minute
<b>OVERALL LENGTH</b>	25.2 inches
<b>OVERALL HEIGHT</b>	38.2 inches
<b>FOOT PLATE SIZE</b>	13 inches x 10.6 inches (standa
<b>ENGINE (MAKE &amp; MODEL)</b>	Robin EC08D air cooled, 2 cycle, 4.79 cu. in.
<b>ENGINE HORSEPOWER</b>	3.3 HP
<b>FUEL TANK CAPACITY</b>	2 quarts
<b>FUEL</b>	25:1 gasoline/oil mixture
<b>STARTING SYSTEM</b>	Recoil starter

**ENGINE RPM SETTINGS**

WITHOUT LOAD	WITH LOAD	CLUTCH - IN RPM
4100 +/- 100	4000 +/- 100	2900 +/- 100

**SPEZIFIKATIONEN**

<b>MODELL</b>	RX-55
<b>GEWICHT</b>	55 kilos
<b>VIBRIEREN FREQUENZ</b>	550 zu 600 U/M
<b>AMPLITUDE</b>	3.98 zu 5.99 centimeters
<b>FAHRGESCHWINDIGKEIT</b>	12 zu 14 meters einer minuten
<b>GESAMTLÄNGE</b>	64 centimeters
<b>GESAMTHÖHE</b>	90 centimeters
<b>FUSSPLATTE</b>	33.0 cm x 27.0 cm (maßstab)
<b>MOTOR (FABRIKAT &amp; MODELL)</b>	Robin EC08D luftgekühlt, 2 cycle, 4.79 cu. in.
<b>MOTOR PS</b>	3.3 PS
<b>KRAFTSOFTANK-KAPAZITÄT</b>	1.9 liters
<b>KRAFTSTOFF</b>	25:1 benzin/öl mischung
<b>ANLASSERSYSTEM</b>	Seilzugstarter

**MOTORDREHZAHL-EINSTELLUNG**

OHNE BELASTUNG	MIT BELASTUNG	EINKUPPLUNGS-UPM
4100 +/- 100	4000 +/- 100	2900 +/- 100

# SECTION 18 - PARTS MANUAL

ABSCHNITT 18 - ERSATZTEILLISTEHANDBUCH

## **RX-55**

### **TAMPER RAMMER**

### **STAMPFRAMMER**

**COMMUNICATION NO. 59013920**

*Doosan purchased Bobcat Company from Ingersoll-Rand Company in 2007. Any reference to Ingersoll-Rand Company or use of trademarks, service marks, logos, or other proprietary identifying marks belonging to Ingersoll-Rand Company in this manual is historical or nominative in nature, and is not meant to suggest a current affiliation between Ingersoll-Rand Company and Doosan Company or the products of either.*

**Revised (01-13)**

**RX-55**  
**OPERATION AND PARTS MANUAL**

***\*\*Always use Ingersoll-Rand Replacement parts!\*\****

## SECTION 18 - PARTS MANUAL

### WHEN ORDERING REPLACEMENT PARTS

Find the appropriate part from those listed among the parts exploded views and furnish Ingersoll-Rand with the following information; Model, Serial Number, Part Number, Part Name and the Required Quantity. The number given in the REQD No. column indicates the quantity of parts used for one unit.

#### NOTE

*The parts listed in the parts manual are subject to change without notice.*

#### TABLE OF CONTENTS

UPPER SECTION .....	18-4
ENGINE, HANDLE AND LOWER CASING SECTION .....	18-8
ENGINE ASSEMBLY(59839696) - INTERNAL BREAKDOWN .....	18-12
FOOT PLATE ASSEMBLY, TOOLS AND DECALS .....	18-20
NUMERICAL INDEX .....	18-23

## ABSCHNITT 18 - ERSATZTEILLISTEHANDBUCH

### BESTELLUNG VON ERSATZTEILEN

Suchen Sie das entsprechende Teil aus den Auflistungen zwischen den Zeichnungen heraus und geben Sie das folgende bei ihrer Bestellung an: Modell, Werks-Nr., Teile-Nr., Teilebezeichnung und die benötigte Menge. Die in der Spalte BEN. ANZAHL angegebene Menge gilt für eine Maschine.

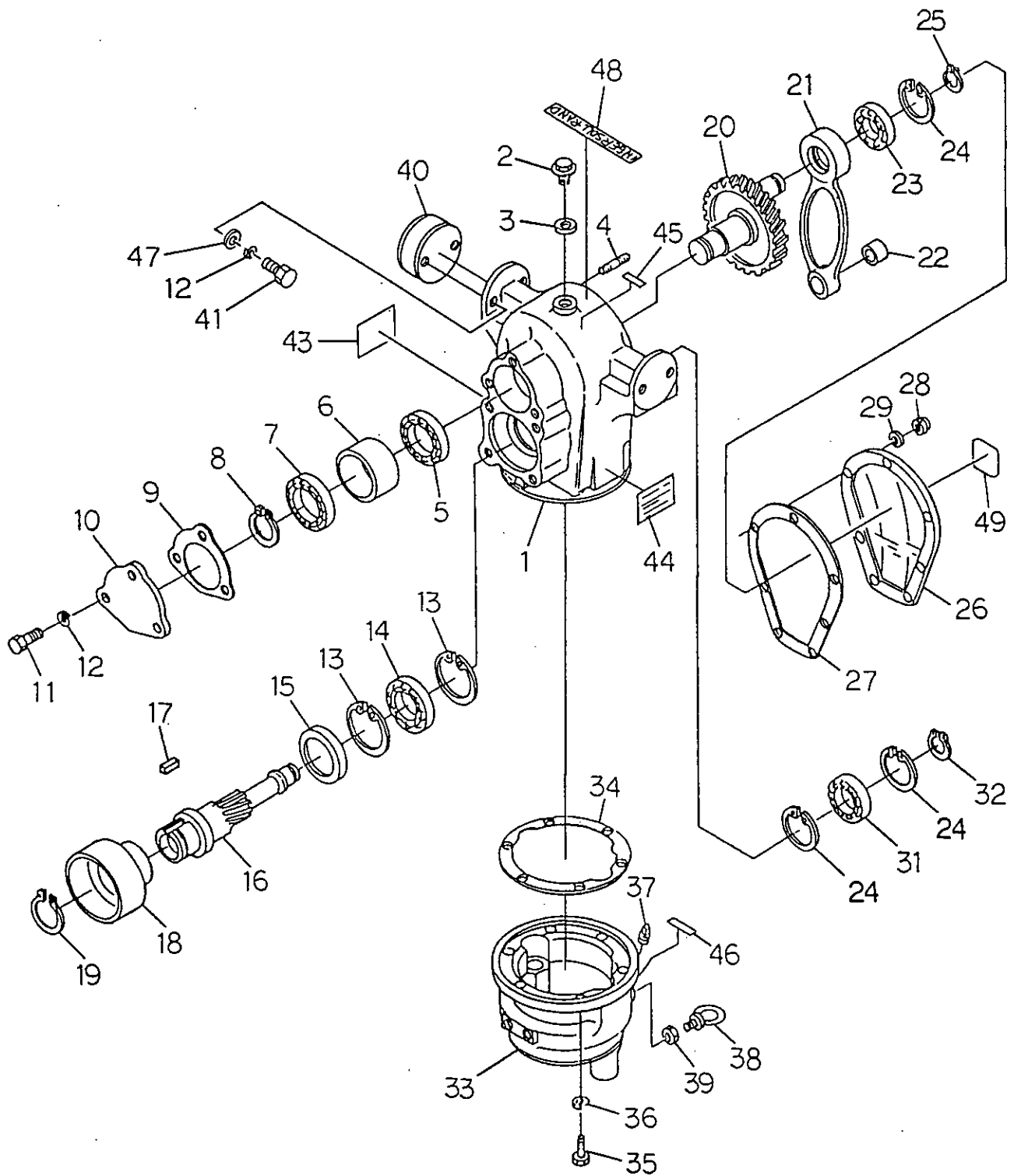
#### HINWEIS

*Wir behalten uns Änderungen an der Ersatzteilliste ohne vorherige*

#### TABLE OF CONTENTS

UPPER SECTION .....	18-4
ENGINE, HANDLE AND LOWER CASING SECTION .....	18-8
ENGINE ASSEMBLY(59839696) - INTERNAL BREAKDOWN .....	18-12
FOOT PLATE ASSEMBLY, TOOLS AND DECALS .....	18-20
NUMERICAL INDEX .....	18-23

RX-55  
PARTS MANUAL



UPPER SECTION  
Revision 4

UPPER SECTION

ITEM	COMM. NO.	DESCRIPTION	QTY	DIMENSION / NOTES
		Ref. RX55-PRL92-1		
1	59839217	Upper Casing	1	
2	59831123	Feed Plug	1	
3	59831131	Packing	1	
4	59842294	Stud Bolt	1	
5	59839258	Ball Bearing	1	No. 6206Z
6	59839266	Collar	1	
7	59839274	Ball Bearing	1	No. 6305Z
8	59839282	Snap Ring	1	S-25
9	59839290	Packing	1	
10	59839308	Bearing Cap	1	
11	59841627	Hex Bolt	3	M8 x 23
12	59831925	Spring Washer	7	M8
13	59839332	Snap Ring	1	R-62
14	59839340	Ball Bearing	1	No. 6206 C3
15	59839357	Oil Seal	1	SC-45629
16	59839365	Pinion Gear Shaft	1	
17	59839373	Key	1	7 x 7 x 18
18	59839381	Clutch Drum	1	
19	59839399	Snap Ring	1	S-42
20	59839407	Crank Gear	1	
21	59839415	Crank Rod Assembly	1	
22	59839423	Bushing	1	
23	59839431	Ball Bearing	1	No. 6204ZZ
24	59837948	Snap Ring	3	R-47
25	59839456	Snap Ring	1	S-20
26	59839464	Casing Cover	1	
27	59839472	Packing	1	
28	59831917	Nylon Nut	1	M8
29	59831560	Lock Washer	1	M8
30	----	----	----	----
31	59839514	Ball Bearing	1	No. 6303 C3
32	59838169	Snap Ring	1	S-17
33	59839530	Middle Casing	1	
34	59839548	Packing	1	
35	59831792	Hex Bolt	6	M10 x 35
36	59951632	Spring Washer	6	M10
37	59839571	Oil Gauge Plug	1	1/8"
38	59839589	Eye Bolt	2	M10
39	58835943	Lock Nut (Effective with S/N SR5057)	2	M10
40	59839605	Rubber Buffer	2	
41	59841627	Hex Bolt	4	M8 x 23
42	----	----	----	----
43	N.S.S.	Name Plate	4	
44	59839647	Caution Label	1	
45	59839654	Oil Feed Label	1	

CONTINUED

**RX-55**  
**OPERATION AND PARTS MANUAL**

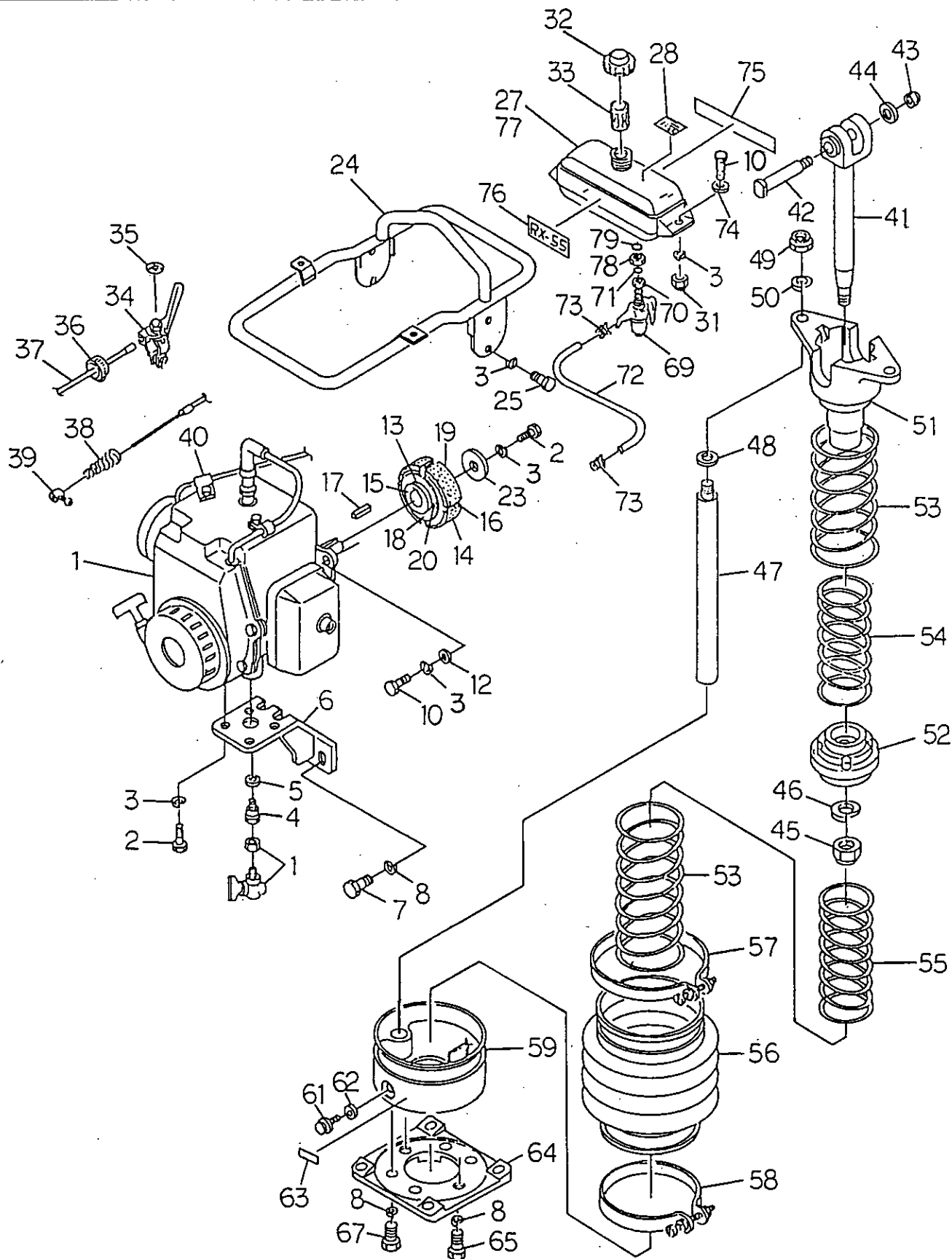
***\*\*Always use Ingersoll-Rand Replacement parts!\*\****

## UPPER SECTION

ITEM	COMM. NO.	DESCRIPTION	QTY	DIMENSION / NOTES
46	59839662	Oil Gauge Label	1	M8
47	59835371	Plain Washer	1	
48	59426247	Decal, 8" I-R Head (Eff. with S/N 9508)	1	
49	59484261	Decal, Emblem (Eff. with S/N 9508)	1	



RX-55  
PARTS MANUAL



ENGINE, HANDLE, AND LOWER CASING SECTIONS

Revision 4

## ENGINE, HANDLE, AND LOWER CASING SECTIONS

ITEM	COMM. NO.	DESCRIPTION	QTY	DIMENSION / NOTES
		Ref. RX55-PRL92-2		
1	59839696	ENGINE ASSEMBLY (EC08D 0358)	1	See Internal Breakdown
2	59832535	Hex Bolt	5	M8 x 20
3	59831925	Spring Washer	15	M8
4	59839720	Joint	1	
5	59839738	Packing	1	
6	59839746	Engine Support	1	
7	59831826	Hex Bolt	2	M10 x 20
8	59951632	Spring Washer	8	M10
9	----	----	----	----
10	59953935	Hex Bolt (Effective with S/N MR5085)	6	M8 x 30
-	59843169	Hex Bolt (Prior to S/N MR5085)	6	M8 x 30
11	----	----	----	----
12	59835371	Plain Washer	4	M8
13	59839811	Centrifugal Clutch Assembly	1	
14	59839829	Clutch Lining Shoe	1	4 Piece Set
15	59839837	Clutch Boss	1	
16	59839845	Clutch Spring	4	
17	59839852	Clutch Key	1	
18	59839860	Guide Plate	1	
19	59839878	Guide Plate	1	
20	59839886	Screw	1	M5 x 8
21	----	----	----	----
22	----	----	----	----
23	59843540	Washer	1	
24	58898222	Operating Handle (Eff. with S/N MR5085)	1	
-	59839928	Operating Handle (Prior to S/N MR5085)	1	
25	59831552	Hex Bolt	4	
26	----	----	----	M8 x 16
27	59444810	Fuel Tank (Effective with S/N IR5040)	1	----
-	59388545	Fuel Tank (Prior to S/N MR5085)	1	
28	59426270	Caution Label (Effective with S/N 9508)	1	
29	----	----	----	----
30	----	----	----	----
31	59831917	Nylon Nut	2	M8
32	59853226	Fuel Tank Cap	1	043-04400-33
33	59853358	Fuel Filter	1	064-13100-10
34	59831511	Throttle Lever Assembly	1	Dia. 25
35	59841767	High-Low Label	1	
36	59840041	Throttle Wire Band	1	B-25
37	59840058	Throttle Wire	1	
38	59840066	Return Spring	1	
39	59840074	Wire End Fitting	1	
40	59840082	Wire Clamp	1	
41	59840090	Connecting Rod	1	
42	59840108	Connecting Rod Pin	1	
CONTINUED				

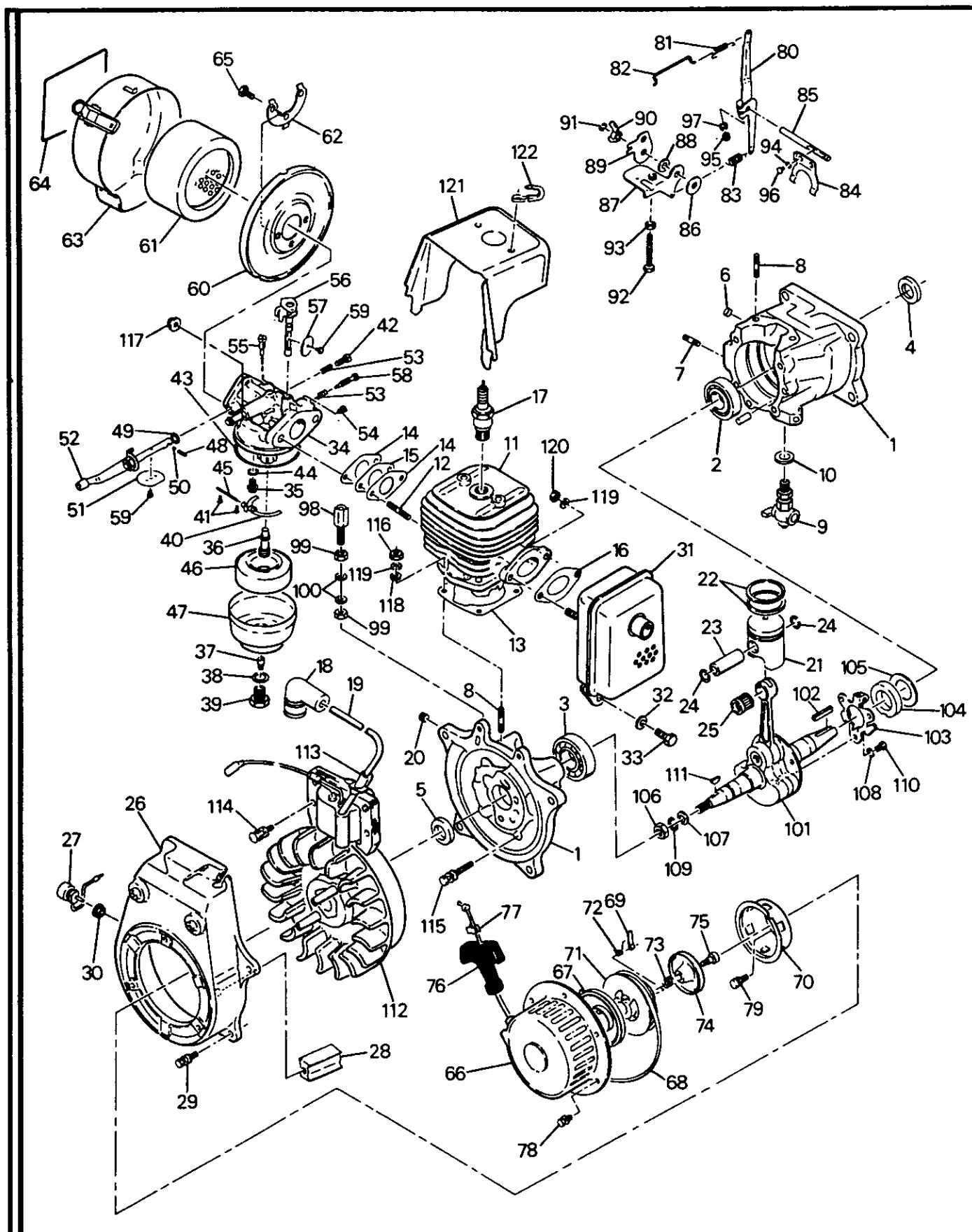
**RX-55**  
**OPERATION AND PARTS MANUAL**

***\*\*Always use Ingersoll-Rand Replacement parts!\*\****

## ENGINE, HANDLE, AND LOWER CASING SECTIONS

ITEM	COMM. NO.	DESCRIPTION	QTY	DIMENSION / NOTES
43	59840116	Nylon Nut	1	M10, P1.25
44	59840124	Washer	1	
45	59840132	Nylon Nut	2	M16, P1.25
46	59840140	Spring Washer	2	M16
47	59840157	Guide Shaft	2	
48	59840165	Collar	1	
49	59840173	Nylon Nut	1	M14, P1.5
50	59832618	Spring Washer	2	M14
51	59840199	Guide Shaft Head	1	
52	59840207	Spring Retainer	1	
53	59840215	Large Coil Spring	1	
54	59840223	Small Upper Coil Spring	1	
55	59840231	Small Lower Coil Spring	1	
56	58836560	Bellows (Effective with S/N SR5057)	1	
-	59840249	Bellows (Prior to S/N SR5057)	1	
57	58836578	Large Band (Effective with S/N SR5057)	1	
-	59840256	Large Band (Prior to S/N SR5057)	1	
58	58836586	Small Band (Effective with S/N SR5057)	1	
-	59839688	Small Band (Prior to S/N SR5057)	1	
59	59840264	Lower Casing Assembly	1	
60	----	----		----
61	59831123	Oil Drain Plug	1	
62	59831131	Packing	1	
63	59840306	Oil Drain Label	1	
64	59840314	Lower Connecting Plate	1	
65	59831792	Hex Bolt	2	M10 x 35
66	----	----		----
67	59832287	Hex Bolt	4	M10 x 30
68	----	----		----
69	59841676	Fuel Strainer (Effective with S/N IR5040)	1	064-20014-01
-	59843219	Fuel Strainer (Prior to S/N MR5085)	1	
70	59841684	Lock Nut (Effective with S/N IR5040)	1	064-20029-20
71	59841692	O-Ring (Effective with S/N IR5040)	1	064-20003-30
72	59872044	Rubber Pipe	1	
73	59841718	Hose Clamp	2	056-11000-30
74	58898230	Washer (Effective with S/N MR5085)	2	Dia 8.5 x 22 x 2.3
75	59426262	Decal, 8" I-R (Effective with S/N 9508)	1	
76	59386250	Decal, RX-55 (Effective with S/N 9508)	1	
77	58898347	Fuel Tank Assembly (Effective with S/N IR5040)	1	
78	59444828	Seal Nut (Effective with S/N IR5040)	1	
79	59444836	O-Ring (Effective with S/N IR5040)	1	P16, NO.2

RX-55  
PARTS MANUAL



ENGINE ASSEMBLY (59839696) - INTERNAL BREAKDOWN

**ENGINE ASSEMBLY (59839696) - INTERNAL BREAKDOWN**

ITEM	COMM. NO.	DESCRIPTION	QTY	DIMENSION / NOTES
		<small>Ref. 59839696</small>		
1	59941245	Complete Crankcase	1	
2	59853325	-Bearing	1	
3	59853333	-Bearing	1	
4	59853275	-Oil Seal	1	
5	59853259	-Oil Seal	1	
6	59853234	-Oil Seal	1	
7	59542498	-Stud	1	
8	59317396	-Stud	4	
9	59965285	Drain Cock	1	
10	59872143	Gasket	1	
11	59853069	Complete Cylinder	1	
12	59317396	-Stud	2	
13	59853119	Cylinder Packing	1	
14	59853549	Insulator Gasket	2	
15	59853747	Insulator	1	
16	59853028	Muffler Gasket	1	
17	59542613	Spark Plug	1	
18	59853382	Spark Plug Cap	1	
19	59853143	Ignition Coil	1	
20	59317404	Grommet	1	
21	59853127	Piston	1	
22	59853051	Piston Ring Set	1	
23	59853135	Piston Pin	1	
24	59853309	Clip	2	
25	59853341	Needle Bearing	1	
26	59854216	Fan Cover	1	
27	59853044	Stop Button	1	
28	59853036	Guide Rubber	1	
29	59318683	Bolt Assembly	4	
30	59318691	Flange Nut	1	
31	59854224	Complete Muffler	1	
32	59318709	Washer	1	
33	59318725	Bolt Assembly	1	
34	59853077	Complete Carburetor	1	
35	59986901	-Needle Valve	1	
36	59986919	-Nozzle		
37	59853762	-Reverse Main Jet	1	
38	59853788	-Main Jet Packing	1	
39	59853770	-Guide Holder	1	
		CONTINUED		

**RX-55**  
**OPERATION AND PARTS MANUAL**

***\*\*Always use Ingersoll-Rand Replacement parts!\*\****

## ENGINE ASSEMBLY (59839696) - INTERNAL BREAKDOWN

ITEM	COMM. NO.	DESCRIPTION	QTY	DIMENSION / NOTES
40	59941419	-Float Arm	1	
41	59580696	-Screw	2	
42	59318907	-Screw	1	
43	59318741	-Float Chamber Packing	1	
44	59318733	-Packing	1	
45	59318758	-Float Pin	1	
46	59318766	-Float	1	
47	59318774	-Float Chamber	1	
48	59318782	-Choke Spring	1	
49	59318790	-Seal	1	
50	59318808	-Steel Ball	1	
51	59318816	-Choke Valve	1	
52	59318824	-Choke Shaft Assembly	1	
53	59318832	-Spring	2	
54	59318840	-Guide Screw	1	
55	59318857	-Pilot Jet	1	
56	59318865	-Throttle Shaft Assembly	1	
57	59318873	-Throttle Valve	1	
58	59318881	-Pilot Screw	1	
59	59318899	-Screw and Washer	1	
60	59853085	Air Cleaner Assembly	1	
61	59853689	-Element Complete	1	
62	59853564	-Special Lock Washer	1	
63	59318915	-Cover Assembly	1	
64	59318923	-Air Cleaner Label	1	
65	59318931	-Bolt and Washer Assembly	1	
66	59853093	Complete Recoil Starter	1	
67	59318964	-Spiral Spring	1	
68	59853010	-Rope	1	
69	59853002	-Ratchet	1	
70	59986927	-Pulley	1	
71	59318972	-Reel	1	
72	59318980	-Return Spring	1	
73	59318998	-Friction Spring	1	
74	59319004	-Friction Plate	1	
75	59319012	-Center Screw	1	
76	59319020	-Starter Knob	1	
77	59319061	-Rope Starter	1	
78	59319038	Bolt Assembly	3	
CONTINUED				



**RX-55**  
**OPERATION AND PARTS MANUAL**

***\*\*Always use Ingersoll-Rand Replacement parts!\*\****

ENGINE ASSEMBLY (59839696) - INTERNAL BREAKDOWN

ITEM	COMM. NO.	DESCRIPTION	QTY	DIMENSION / NOTES
79	59319046	Bolt Assembly	2	
80	59318584	Governor Lever	1	
81	59853572	Rod Spring	1	
82	59853416	Rod	1	
83	59853754	Spring	1	
84	59318568	Yoke	1	
85	59318576	Shaft	1	
86	59542902	Friction Washer	2	
87	59318592	Lever	1	
88	59542944	Washer	1	
89	59318600	Stop Plate	1	
90	59318618	Wing Nut	1	
91	59318626	Clip	1	
92	59318634	Bolt	1	
93	59542852	Nut	1	
94	59318642	Spring Washer	1	
95	59542852	Nut	1	
96	59318659	Pan Head Screw	1	
97	59318667	Spring Washer	1	
98	59317453	Adjusting Screw	1	
99	59542589	Nut	2	
100	59542878	Washer	2	
101	59317461	Crankshaft	1	
102	59317479	Key	1	
103	59542654	Governor Plate Unit	1	
104	59317487	Governor Sleeve	1	
105	59317495	Spacer	1	
106	59318501	Nut	1	
107	59318519	Washer	1	
108	59318527	Spring Washer	3	
109	59318535	Spring Washer	1	
110	59318543	Pan Head Screw	3	
111	59318550	Key	1	
112	59888453	Complete Magneto	1	
113	59318949	Grommet	1	
114	59318956	Screw Assembly	2	
115	59317412	Bolt Assembly	4	
116	59317420	Nut	4	
117	59317438	Flange Nut	2	
CONTINUED				

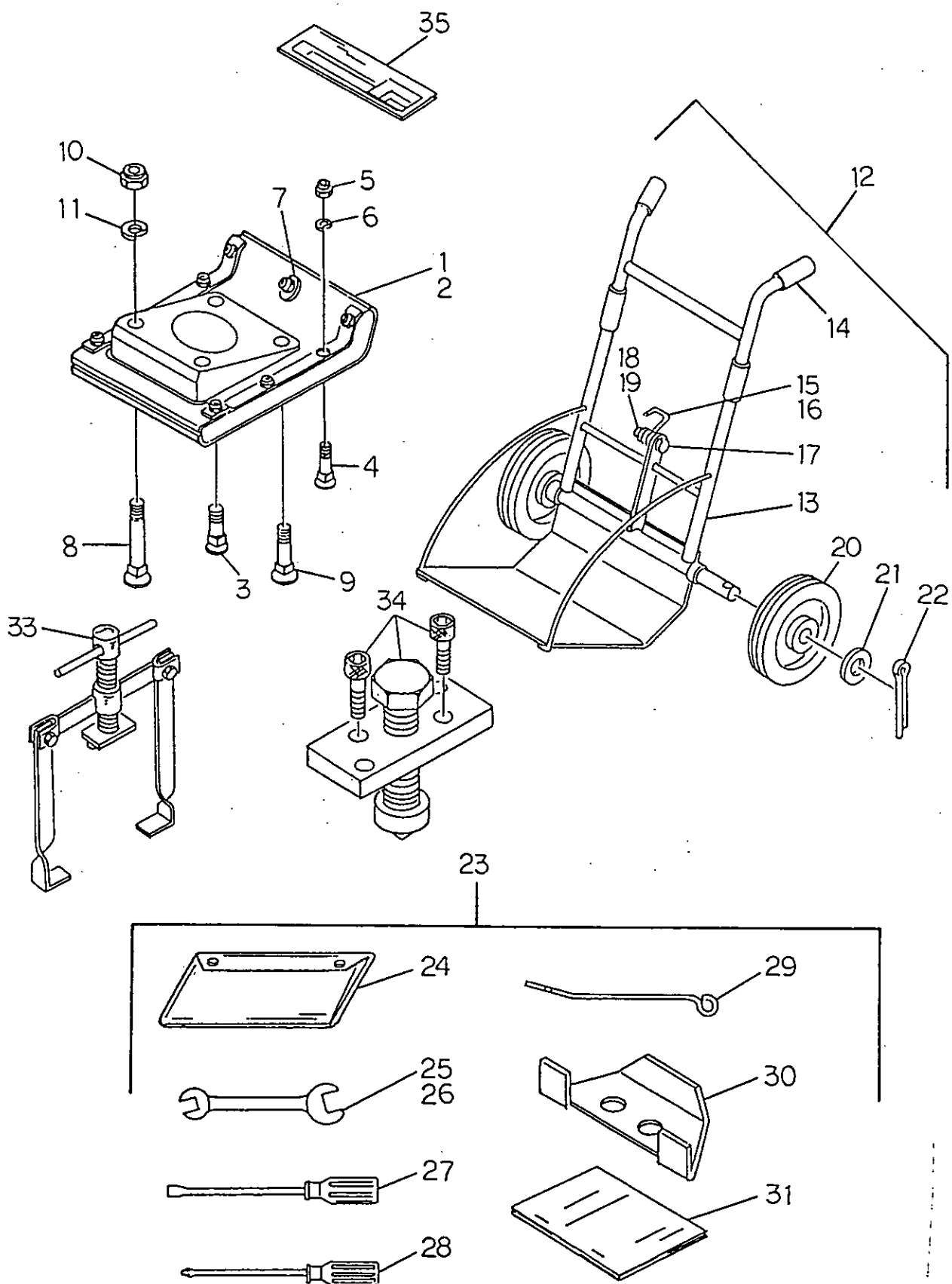
**RX-55**  
**OPERATION AND PARTS MANUAL**

***\*\*Always use Ingersoll-Rand Replacement parts!\*\****

### ENGINE ASSEMBLY (59839696) - INTERNAL BREAKDOWN

ITEM	COMM. NO.	DESCRIPTION	QTY	DIMENSION / NOTES
118	59542878	Washer	4	
119	59319053	Spring Washer	6	
120	59317446	U-Nut	2	
121	59318675	Cylinder Cover	1	
122	59318717	Clamp	1	

# RX-55 PARTS MANUAL



## FOOT PLATE ASSEMBLY, TOOLS, AND DECALS

### Revision 4

**FOOT PLATE ASSEMBLY, TOOLS, AND DECALS**

ITEM	COMM. NO.	DESCRIPTION	QTY	DIMENSION / NOTES
		<small>Ref RX55-PRL92-3</small>		
1	59840363	Foot Plate Assembly	1	
2	59840371	Foot Plate Assembly, Option	1	Narrow Type
3	59840389	Flush Bolt	2	M8 x 53
4	59840397	Flush Bolt	2	M8 x 50
5	59831917	Nylon Nut	4	M8
6	59831925	Spring Washer	4	M8
7	59840421	Washer	1	
8	59840439	Flush Bolt	2	M12 x 115
9	59840447	Flush Bolt	2	M12 x 74
10	59840454	Nylon Nut	4	M12
11	59831743	Spring Washer	4	M12
12	59840470	Carrying Cart Assembly, Option	1	
13	59840488	-Carrying Cart Body	1	
14	59840496	-Grip	2	1/2"
15	59840504	-Hook	1	
16	59842963	-Collar	1	
17	59953935	-Hex Bolt (Effective with S/N MR5085)	1	M8 x 30
-	59843169	-Hex Bolt (Prior to MR 5085)	1	M8 x 30
18	59832931	-Hex Nut	1	M8
19	59831057	-Washer	1	Dia. 8.5 x 25 x t3.2
20	59843706	-Wheel	2	8"
21	59839159	-Washer	2	M20
22	59840579	-Cotter Pin	2	Dia. 4 x 45L
23	59840587	Tool Kit for RX-55	1	
24	59839050	-Tool Bag	1	
25	59830018	-Double-Ended Spanner	1	17 x 19
26	59830000	-Double-Ended Spanner	1	10 x 13
27	59838805	-"Minus" Screwdriver	1	Regular Head
28	59840637	-"Plus" Screwdriver	1	Phillips Head
29	59840645	-Oil Gauge	1	
30	59843300	-Parallel Ruler	1	
31	58942152	-Instructions and Parts List	1	Old: 58898586
32	----	----	----	----
33	59843128	Disassembling Tool	1	
34	59843136	Clutch Puller	1	
35	59433367	Decal Set for RX-55 (Effective with S/N 9508)	1	

**RX-55**  
**OPERATION AND PARTS MANUAL**

***\*\*Always use Ingersoll-Rand Replacement parts!\*\****

