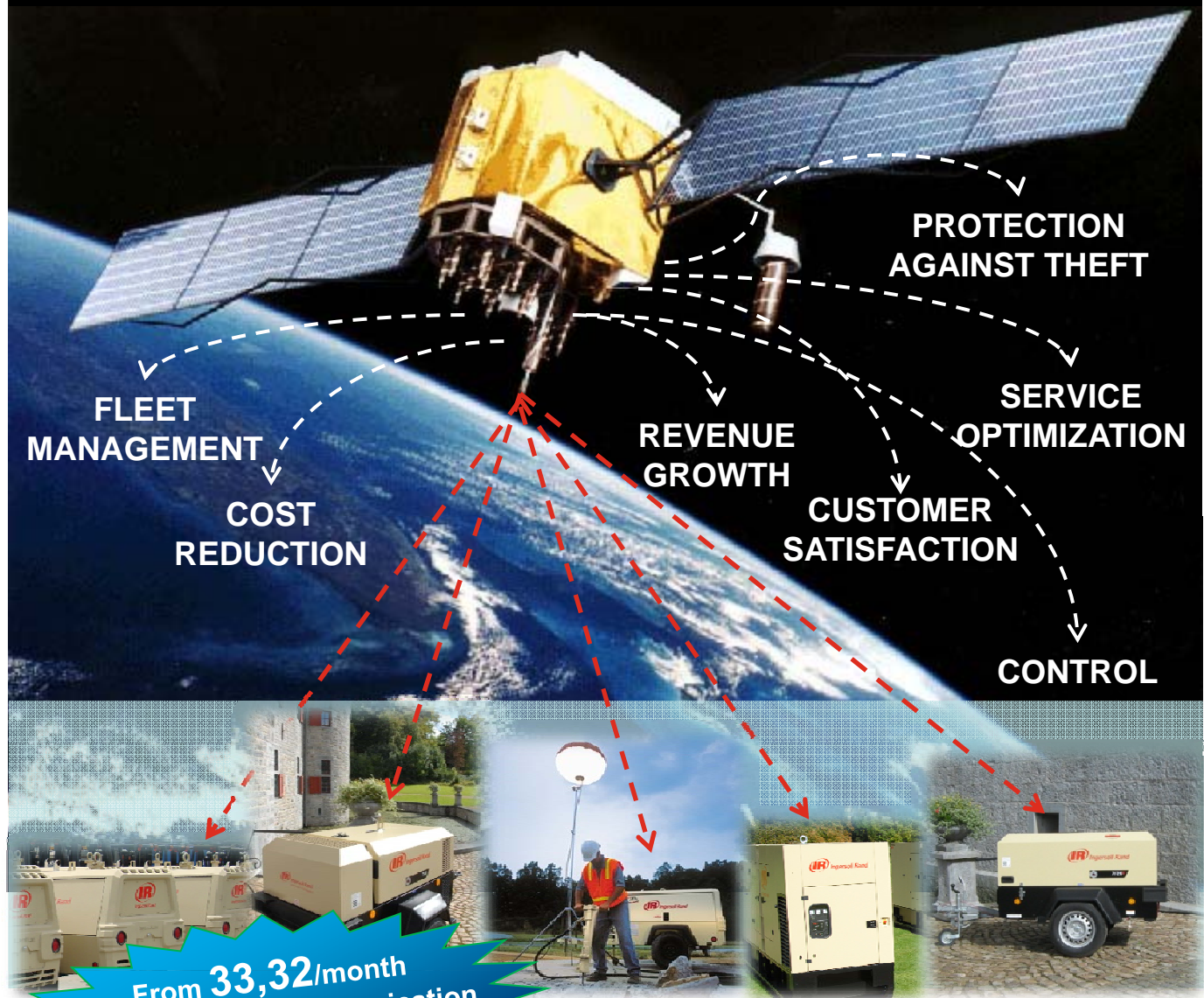




Doosan Infracore
Construction Equipment

Portable Power Parts News – February 2010

Doosan VISION GPS Applications



From 33,32/month
incl. hardware, communication
and unlimited access to portal

**A new approach of fleet and
service vans management**

Prices are ex-works and subject to change without prior notification.



Portable Power Parts News – February 2010

A lot more than a tracking device !

Features and benefits

Here are some examples of the applications and benefits the Doosan Vision GPS system can offer you, your service and parts businesses and your customers. And the customers of your customers !

❖ For you as a Dealer:

The **Doosan Vision** GPS system will allow you to

- **Geolocalize** your equipment and service van fleets
- Have a better knowledge of machines for **trade in**
- Better monitor **demo machines**
- Improve **logistic** management
- Provide higher service to customers (higher **customers satisfaction** & loyalty)
- Better plan and monitor sales and service activities, **reducing costs** and idle times
- Anti-theft

❖ For your service and parts businesses:

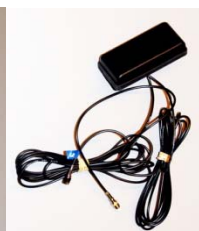
The **Doosan Vision** GPS system will allow you to

- Mark addresses and points of interests (**POI**)
- Identify the service van that is **closest to the customer** : reduce fuel cost and travel time, inform the customer on the precise technician arrival time
- Schedule **field service** while customer is not using equipment
- Monitor failure risks to **avoid major repairs** (2 free sensors to connect to selected parameters will send real time warnings in case of risk (low oil pressure, water in fuel, plugged air filter,...))
- Package with other **customer-focused programs** (maintenance, leasing)
- Improve **parts sales**, inventory management
- **Analyse activities** on a given period
- Get information for **warranty** verification
- **Avoid disputes** on service and parts invoicing
- Benefit from a performant **navigation** device

❖ For customers and rental fleets:

The **Doosan Vision** GPS system is about daily monitoring of fleets, allowing to

- Create a virtual fence (**geofencing**) around equipment to define allowed working area
- **Monitor working hours**, avoid disputes on invoicing
- Monitor machine use and technical problems
- **Monitor failure risks** to avoid major repairs (2 free sensors to connect to selected parameters will send real time warnings in case of risk (low oil pressure, water in fuel, plugged air filter,...))
- Protect against **theft** by tracking and speed monitoring (unusual speed = machine loaded on a truck)
- Enhance parts replacement & **operators management**
- Benefit from a performant **navigation** device



**Doosan
VISION
Antenna
(option)**

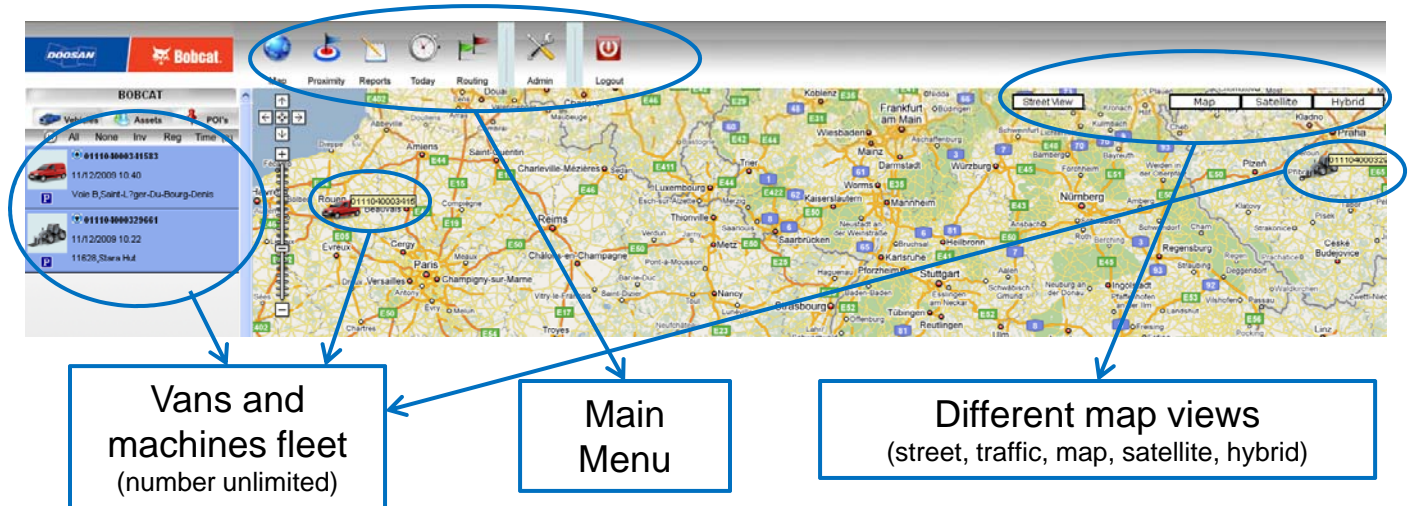
Invisible once installed



Doosan Infracore
Construction Equipment

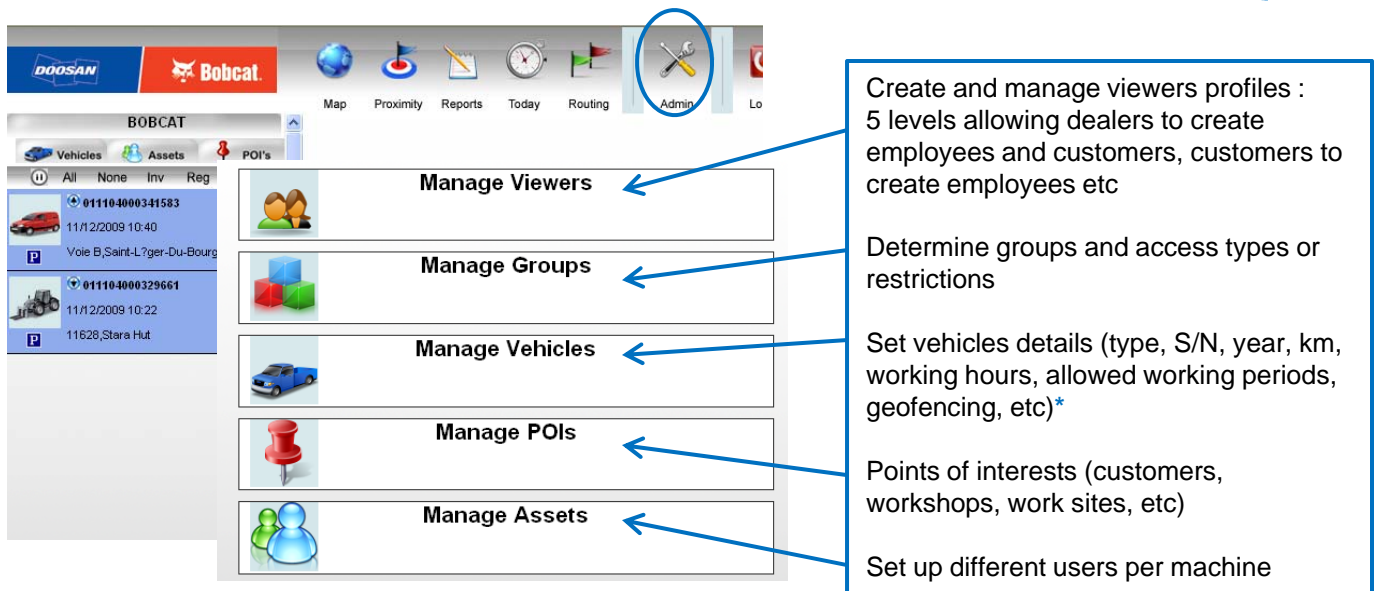
Portable Power Parts News – February 2010

Many functions and applications !



ONE single website to manage
ALL your vans and machines !

1. Administration



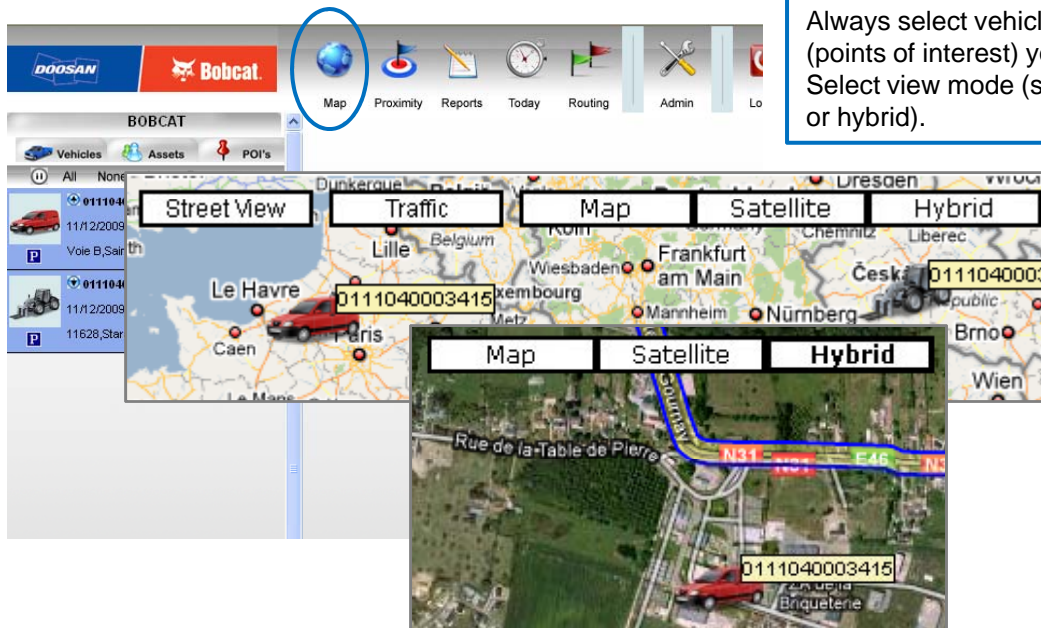
*2 free sensors to connect to selected parameters will send real time warning in case of risk (low oil pressure, water in fuel, plugged air filter,...)



Doosan Infracore Construction Equipment

Portable Power Parts News – February 2010

2. Map

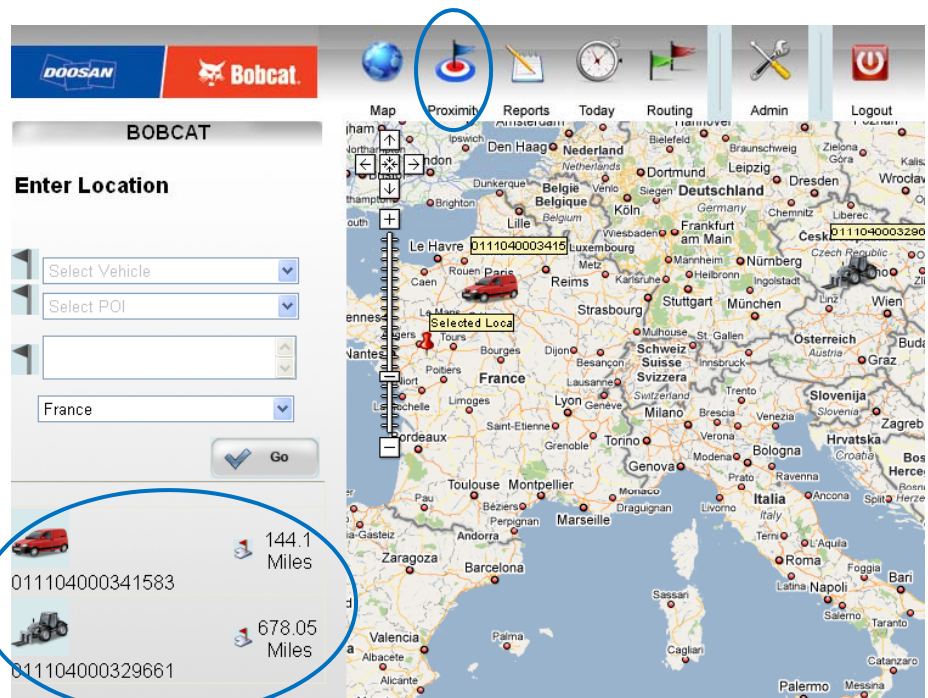


Always select vehicles, machines and POIs (points of interest) you want the map to show. Select view mode (streets, traffic, map, satellite or hybrid).

3. Proximity

Identifies closest service van to customer's machine.

- Save time, call the right technician.
- Save fuel and money, optimize your teams planning.
- Enhance customers satisfaction :
 - ✓ tell them exactly when the technician will arrive
 - ✓ reduce travel time invoicing
 - ✓ reduce waiting time (emergencies)





Doosan Infracore Construction Equipment

Portable Power Parts News – February 2010

4. Today



Summary report on one van or machine's activity during one day: distance (km), travel on the map, time, duration average and maximum speed. The « Reports » menu is more complete.

5. Reports

BOBCAT

Vehicles Assets POI's

All None Inv Reg Time (2)

01110-4000341583

11/12/2009 16:40

Voie C,Saint-L?ger-Du-Bourg-Denis

01110-4000329661

11/12/2009 15:22

11628,Stara Hut

Map **Proximity** **Reports** **Today** **Routing** **Admin** **Logout**

GPS Journey
View journey details and plot snail-trail maps.

Late Start
View start times of vehicles.

Time-On-Site
View details of time spent on-site (between journeys).

Daily
View summary details of daily journey activity.

Overspeed
View details of journeys where the vehicle exceeded specified speeds.

Diagnostic History
Diagnostic report for every message received.

Equipment Report
View session details and plot snail-trail maps.

Tamper Report
Show summary of all tamper alert activity.

Unauthorised Report
Show summary of unauthorised activity.

Equipment Hours Report
View Equipment Hours Details For The Given Time Period

Graphical Hours Report
View a Graphical representation of Hours done by machines

Detailed reports on van, machine, operator or technician's activities or specific analysis during a selected period of time (up to 31 days). Different formats available (on screen, PDF or editable text).

Click on the signs to visualize travels on a map.

Portable Power Parts News – February 2010


5. Reports (cont.)

The Doosan GPS REPORTS function is a very practical tool to monitor your vehicles and personnel activities. It will also assist you in accurate billing or in scheduling more precisely maintenance, services and interventions. It will provide you in seconds with knowledgeable field details and analyse all the parameters that you have set up for monitoring or warning purposes.

SOME EXAMPLES:

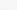

LATE START:

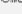
Report on starting times of a technician or operator.





Diagnostic History Report

Notes:

- Click the  icon to view detailed information.
- Click the  icon to view a small trail map.



New Report

Icon	Registration	Info	Links
	011104000341 503	541 entries found	

Type	Date	POI	Location	Type ID	Site Code	Speed F3
HEARTBEAT	08/12/2009 00:34:43		Rue des Hortensias, Saint-Sauveur-D'Almayville			0.0
HEARTBEAT	08/12/2009 01:34:59		Rue des Hortensias, Saint-Sauveur-D'Almayville			0.0
HEARTBEAT	08/12/2009 02:35:07		Rue des Hortensias, Saint-Sauveur-D'Almayville			0.0
HEARTBEAT	08/12/2009 03:35:57		Rue des Hortensias, Saint-Sauveur-D'Almayville			0.0
HEARTBEAT	08/12/2009 04:36:16		Rue des Hortensias, Saint-Sauveur-D'Almayville			0.0
HEARTBEAT	08/12/2009 05:35:32		Rue des Hortensias, Saint-Sauveur-D'Almayville			0.0
HEARTBEAT	08/12/2009 06:35:30		Rue des Hortensias, Saint-Sauveur-D'Almayville			0.0
TAMPER	08/12/2009 07:35:22		Rue des Hortensias, Saint-Sauveur-D'Almayville			0.0
JOURNEY_START	08/12/2009 08:30:40		Rue des Hortensias, Saint-Sauveur-D'Almayville			0.0
SHIELD_BREACH	08/12/2009 08:37:07		Rue des Hortensias, Saint-Sauveur-D'Almayville			10.5
TIRED	08/12/2009 08:38:54		Rue des Hortensias, Saint-Sauveur-D'Almayville			38.0
TRUCK	08/12/2009 08:40:44		Rue des Hortensias, Saint-Sauveur-D'Almayville			40.1

DIAGNOSTIC HISTORY:

Diagnostic report for all warning messages received. Here you will see status of the 2 selected parameters monitored by the 2 free sensors. Detailed equipment operations history helps in accurate billing and convenient service scheduling.

Unauthorised Use Report

Report generated at 14/12/2009 15:40 for 1 vehicles between 08/12/2009 00:00 and 14/12/2009 23:59.

Notes:

- Click the  icon to view detailed information.
- Click the  icon to view a snail trail map.

 **New Report**




Found 8 journeys, Duration: 08:29, Idle: 00:00
Miles: 402.6

011104000341583

Tuesday (08/12/2009)

#	Start	End	Driver	Duration	Miles	Links
1	06:36 Rue des Hortensias, Saint-Sauveur-D'Arnallville	07:44 Voie B, Saint-L ? ger-Du-Bourg-Denis		01:07:29	51.79	
2	12:15 Voie B, Saint-L ? ger-Du-Bourg-Denis	12:21 Rue de la H ? maudifre, La H ? maudifre		00:06:45	4.24	
3	13:04 Rue de la H ? maudifre, La H ? maudifre	13:18 Rue Pierre Lefebvre, Darn Tal		00:14:01	5.17	
4	13:32 Rue Pierre Lefebvre, Darn Tal	13:36 Voie B, Saint-L ? ger-Du-Bourg-Denis		00:04:15	1.87	
5	18:15 Voie B, Saint-L ? ger-Du-Bourg-Denis	19:25 Rue des Hortensias, Saint-Sauveur-D'Arnallville		01:09:40	51.98	

Wednesday (09/12/2009)

#	Start	End	Driver	Duration	Miles	Links
6	06:39 Rue des	07:49 Voie B,				

UNAUTHORISED REPORT:

This report will give you details on when or where the machine or the van has been used, according to the « unauthorised » parameters you have selected and predefined.

Time-On-Site Report
 Report generated at 14 December 2009 demo@sl.doozan.com for 1 Vehicles.

011104000341583

Date	Driver	Location	Arrival Time	Departure Time	Time On Site
14/12/2008 (Monday)		Unit B, Saint-Joe-De-Pourc-Ensis	07:47	17:06	0 days, 4 hours, 24 mins.
14/12/2009 (Monday)		Rue Comte, Ethel	12:24	12:30	0 days, 0 hours, 5 mins.
14/12/2009 (Monday)		Rue Pierre Leduc, Cham-Pol	17:45	17:55	0 days, 0 hours, 10 mins.

TIME ON SITE:

This report about the idle times (and thus working hours) of an operator or technician will allow to avoid disputes on labour time.



Doosan Infracore Construction Equipment

Portable Power Parts News – February 2010

6. Alerts

The Alert manager allows you to set up different kinds of alerts, that you will receive by e-mail or SMS.

The most popular one is probably the **Geo-Fence**. It will send you an alert if a machine is operating outside the allowed zone.

Another interesting application is the **Speed Exception Alert**, which will notice you if the machine/van is moving outside the authorized time schedule.

In a few clicks, you can define which machine(s) you want to control, the controlled time schedule, who will receive the alert, when the alert will be sent etc.

Geo - Fence Alert
Select Group - Please complete the form below to continue

Step 1 Step 2 Step 3 Step 4 Step 5

Select Group: BOBCAT
Select Vehicle: TLS / Training Center
☐ Select All Vehicles
☐ Select all Vehicles in Current Group
Vehicle Reg: TLS / Training Center
Vehicle Country: Ceska Republika
Vehicle Town: Stara Mut
Vehicle Street: 11629
Vehicle POI Name:
Existing POI Radius: 500
Either accept the default radius in the box above, or enter a new bespoke radius if required.
New Radius: 500

Please Select All Vehicles to be added
Add For Alert Remove Alert

Geo - Fence Alert
Select Time/Day - Please complete the form below to continue

Step 1 Step 2 Step 3 Step 4 Step 5

☒ Check for full day
Select the Start Time: 00 : 00
Select the Stop Time: 23 : 59
Select the start and stop time for the new alert

Schedule Alert Days
☒ Check For All Days
Sunday
Monday
Tuesday
Wednesday
Thursday
Friday
Saturday

Alerts are based on 24 hour period
- to set alert overnight you need to set 2 alerts e.g. 7pm to 7am (19.00 - 23.59 and 00.00 to 07.00)

Add Remove

Alerts Manager
Please click on alert type below to continue

Pol Alert
Please click here to send a Pol Alert

Geo - Fence Alert
Please click here to send a Geo - Fence Alert

Speed Exception Alert
Please click here to send a Speed Exception Alert

Maximum Driving Hours Alert
Please click here to send a Maximum Driving Hours Alert

Exceeded Weight Alert
Please click here to send a Exceeded Weight Alert

Siphoning Alert
Please click here to send a Siphoning Alert

Geo - Fence Alert
Select Contact - Please complete the form below to continue

Step 1 Step 2 Step 3 Step 4 Step 5

Select Contact: Rodolphe Petit(Admin) Email: ☒ SMS: ☐ POP*: ☐ Submit

Details of selected Contact
First Name: Rodolphe
Last Name: Petit(Admin)
MobilePhone:
Email: rodolphepetit@diicorp.com
AddressLine1:
City:
County:

Selected Contact For Email: Rodolphe Petit(Admin)
Selected Contact For SMS:

Remove Recipients Remove Recipients

* Please note the following with regard to POP UP Alerts:
(1) You will need to ensure that your browser pop up blocker is disabled.
(2) Always ensure that your V2 Alert Manager window is always left open.
You can minimize the window and the pop up function will still operate correctly



Portable Power Parts News – February 2010

Pricing and references

FOR EUROPE :

P/N	Description	List Pr. €	Monthly	List Pr. £	List Pr. \$
46550597	GPS box, communication and access to portal for 12 months	900€	= only €75 / month	782£	1216\$
46550598	GPS box, communication and access to portal for 36 months	1400€	= only €38.88 / month	1218£	1890\$
46550599	GPS box, communication and access to portal for 60 months	2000€	= only €33.32 / month	1740£	2700\$
46550603 (option)	Antenna (option) to be mounted outside the machine (also for compressors & generators)	80€		70£	108\$

FOR MIDDLE EAST, AFRICA AND CIS :

Outside Europe, we recommend you check GPS coverage for your region with your DAM.

P/N	Description	List Pr. €	Monthly	List Pr. \$
46550600	GPS box, communication and access to portal for 12 months	1000€	= only €83.32 / month	1350\$
46550601	GPS box, communication and access to portal for 36 months	1700€	= only €47.22 / month	2296\$
46550602	GPS box, communication and access to portal for 60 months	2500€	= only €41.66 / month	3376\$
46550603 (option)	Antenna (option) to be mounted outside the machine (also for compressors & generators)	80€		108\$

The portal site should be translated in the major languages by February 2010.

Prices are ex-works and subject to change without prior notification.