

The Portable Product *(continued)*

B) Serial Number of Unit

The distributor should always try to obtain the unit serial number— “The Complete Serial Number.”

For example — 101366 is a serial number, **but**
101366U79910 is the complete serial number.

From the early 1950's to 1970, serial numbers were in the following sequence types:

- 1) 600AR18719 — R600 serial #18719
- 2) 125SRA19209 — RA125 serial #19209
- 3) A85RR61253 — RR85 serial #61253
- 4) 50621L900M — L900 serial #50621

These serial numbers gave the style of unit and the unique serial number. They were stamped on the air end and on the Portable Machine identification plate.

Beginning in 1970 Portable Power went to a product code system for serial numbers. The basic concept was simple—in that, a three digit product code would represent each style of compressor built by the Portable Division. The same concept was carried on until 1991.

Example of “Product Code” type serial number:

98716U77500

- 1) 98716 Unique serial number.
- 2) U Unit was manufactured in Mocksville.
- 3) 77 Unit was manufactured in 1977.
- 4) 500 Product code for DR600.

Also at this point in time, the compressor serial number was removed from the air end. In its place was stamped a unique air end serial number (see Air End Serial Numbers, Page 159) which was totally different from the compressor serial number. The compressor serial number was now stamped on the frame on the right hand side of the unit—when facing the drawbar looking toward the unit. Note: This may vary from unit to unit.

Beginning in 1991 with unit serial number 194276, the year of manufacture was removed from the serial number. A typical serial number looked as follows: 195200U578.

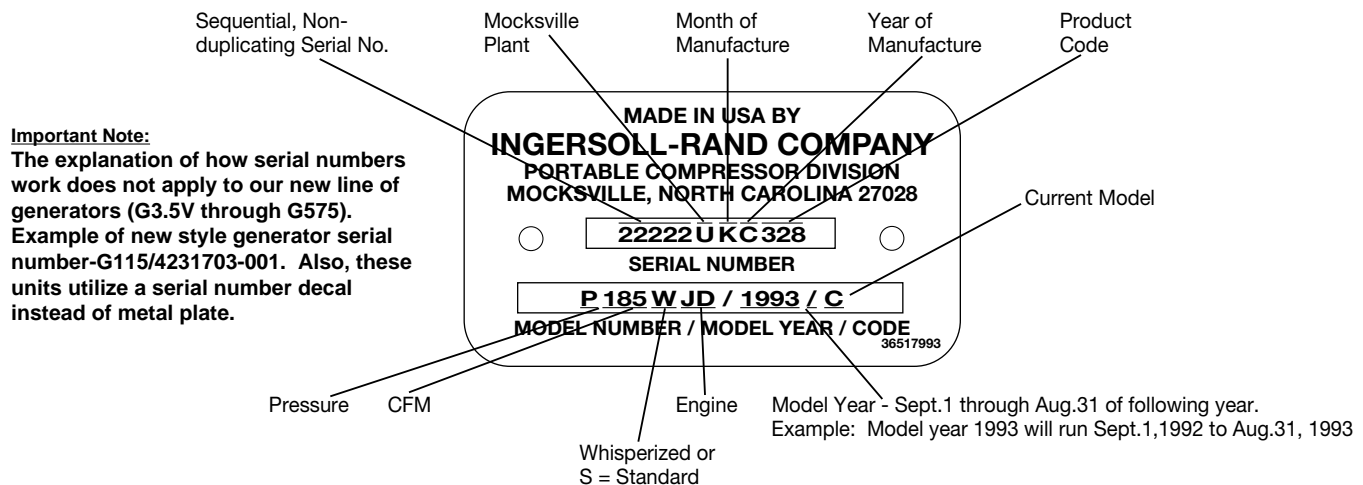
Also in 1991, at unit serial number 199888, the serial number was no longer stamped on the frame of the unit.

Effective in August 1992, with unit serial number 214473, the numeric year of manufacture was reinstated by using two letters that give you the actual month and year of manufacture. The month and year of manufacture is encoded into the serial number according to the coding system that follows.

The new serial number plate will now show the model number for easier identification. This model number will be the nomenclature such as P185WJD. The letter immediately following the Model Year is a code that indicates the current model configuration of the unit. This is just one more feature that will make ordering service parts and referencing maintenance manuals easier.

We have also had requests from the field to change to a model year on our units similar to that used by the automobile manufacturers. Starting Sept. 1, 1992, we changed to a model year that runs from September 1 to August 31 of the following year. For example, any unit manufactured between September 1, 1992, and August 31, 1993, will carry a 1993 model year designation. Units manufactured between September 1, 1993, and August 31, 1994 will be 1994 models, etc.

The new metal serial number plate will look as follows:



The Portable Product *(continued)*

<u>MONTH of Manufacture</u>	<u>CODE</u>	<u>YEAR of Manufacture</u>	<u>CODE</u>
January	A	1992	B,C
February	B	1993	D
March	C	1994	E
April	D	1995	F
May	E	1996	G
June	F	1997	H
July	G	1998	I
August	H	1999	J
September	I	2000	K
October	J	2001	L
November	K	2002	M
December	L	2003	N
		2004	O
		2005	P
		2006	Q
		2007	R
		2008	S
		2009	T
		2010	U
		2011	V
		2012	W
		2013	X
		2014	Y
		2015	Z

Location of Serial Number Plates

(effective with S/N 214473)

Utility Mount Compressors:

Left hand side (airend oil filter side) of fan shroud, or inside of door at instrument panel.

Platinum Series (P100 thru P185):

Inside front panel near radiator (street side), or curb side fan shroud.

P250 thru P375 Cummins and John Deere:

Fan shroud (curb side).

Prestige Series (100 thru 250 cfm), P250WD, VHP300WD/P375WD, HP375WD, XP400WD, P425WD, XHP600/750SCAT, and Towable Generators:

Left hand side (street side) of fan shroud, or above instrument panel on horizontal part of box.

Fast Tracks (New style with fenders):

Fan shroud (curb side), or above instrument panel on horizontal part of box.

Fast Tracks, Large EPA, HP300WCU, P375WCU, HP450WCU, XP525WCU, P600WCU and other intermediate size compressors:

Above instrument panel on horizontal part of box.

AF-1600:

On outside of the discharge pipe support, midway between sub-base and top.

L6/L8 Light Towers:

On the backside of the instrument/control panel rear cover in top right hand corner. L6A and L8A: on left hand side (street side) of rear tower support above fan shroud. L6B and L8B: Right hand side (inside of unit) of rear panel near radiator. L6C and L8C: radiator side support on curb side.

Light Source:

Top of instrument panel box.