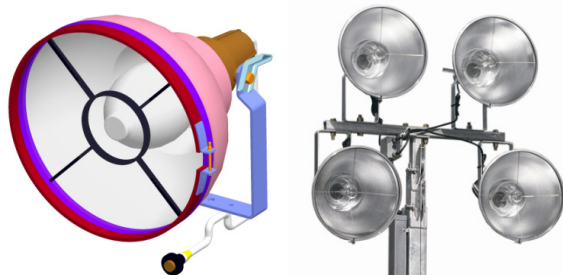


Lighting Systems Enhancements: Q2 2009

- Rectangular Style Lights
 - More robust
 - Cast aluminum housing compared to the old spun aluminum
 - Reflector is a separate piece of anodized aluminum inside the housing compared to the old housing that was also the reflector – risk of light distribution being disrupted is lowered
 - Features similar thermal and impact shock resistant glass lens, and silicone gasket for dust and moisture protection
 - Reduced wind load
 - Smaller footprint – solidifies and improves upon the already industry leading maximum wind load of 65 mph

Old

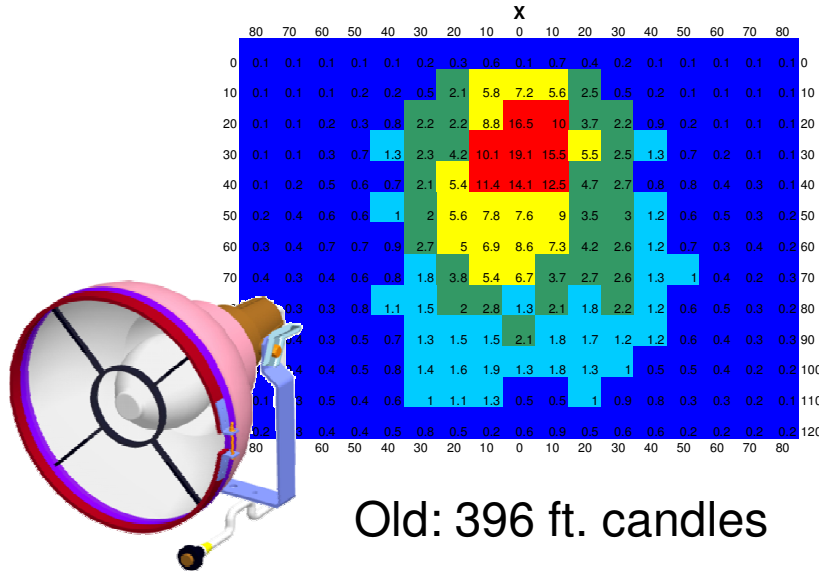


New

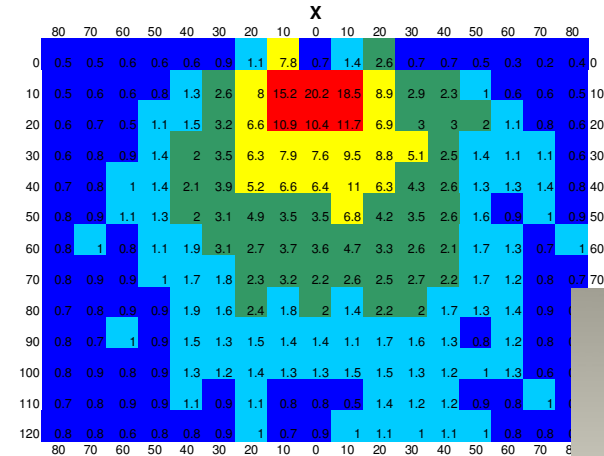


Lighting Systems Enhancements: Q2 2009

- Rectangular Style Lights
 - Improved lighting
 - Rating of 6x7 beam spread compared to the old 6x6 beam spread as defined by NEMA (National Electric Manufacturers Association)
 - Better light distribution
 - Bulb is side-mounted / horizontal inside fixture compare to the old mount rear-mounted bulb
 - 460 foot candles compared to the old 396 foot candles



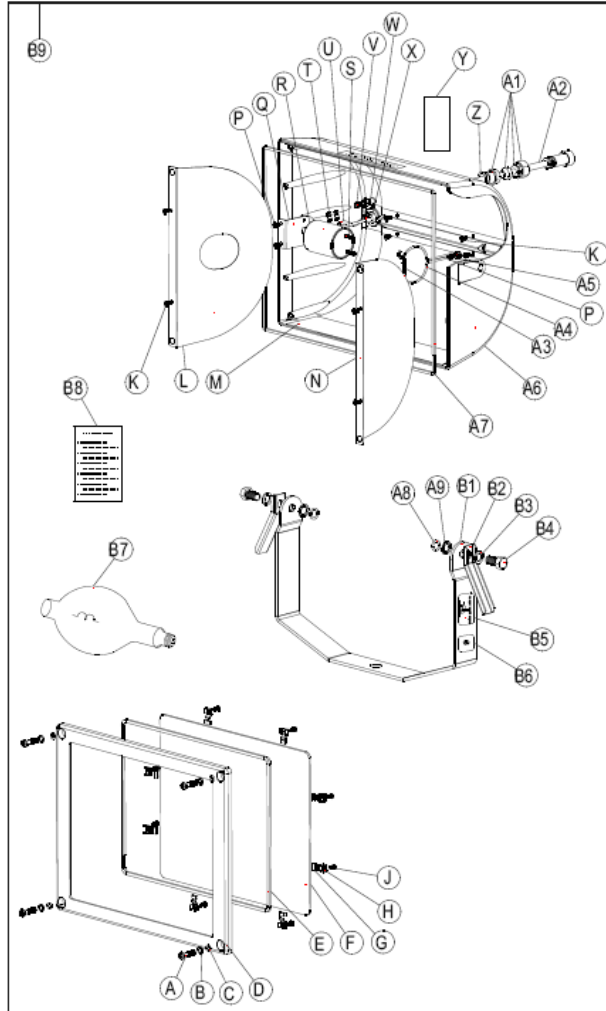
Old: 396 ft. candles



New: 460 ft. candles

Lighting Systems Enhancements: Q2 2009

- Rectangular Style Lights
 - New parts breakdown for parts and service support: after S/N 408213



ITEM	COMM. NO.	DESCRIPTION	QTY
A	46497236	Screw	4
B	46497228	Washer, Flat	4
C	46497210	Washer, Rubber	4
D	46497202	Frame, Top	1
E	46497194	Gasket, Lens	1
F	46497186	Lens, Glass	1
G	23177371	Cover, Lens Clip	8
H	23177371	Clip, Lens	8
J	46497178	Screw	8
K	46497160	Screw	8
L	46497152	Reflector, Lamp Side	1
M	46497145	Reflector, Main	1
N	49497137	Reflector, Side	1
P	46497129	Screw	3
Q	46497111	Bracket, Socket	1
R	23177397	Socket, 5kv	1
S	46497103	Screw	2
T	46497095	Connector, Wire	2
U	46497087	Sleeve, Fiberglass	3
V	46497079	Screw	1
W	46497061	Washer, Star	1
X	46497053	Spring, Strain Relief	1
Y	46497046	Pad, Insulation	1
Z	46497038	Gasket, Insulated Pad	1
A1	46497020	Joint, Threaded, W/Bushing, Ring and Nut	1
A2	46497012	Cable	1
A3	46497004	Spring, Lamp	1
A4	46496998	Brace, Lamp	1
A5	46496980	Washer, Flat	1
A6	46496972	Housing, Base	1
A7	46496964	Gasket, Top Frame	1
A8	46496956	Washer, Rubber	2
A9	23177702	Washer, Star	2
B1	46496949	Yoke, Trunion	1
B2	23177751	Handle, Adjustment	1
B3	23177710	Washer, Spring	2
B4	23177694	Screw	2
B5	46496931	Label, Aiming	1
B6	46497657	Decal, CSA/UL Approval	1
B7	23084965	Lamp, 1000W	1
B8	46496923	Sheet, Instruction, Flood Lamp	1
B9	46496907	Lamp Assembly, Complete	1