



Doosan Infracore
Portable Power

Service Letter

SL: 40019
Date: 1 March 2011
Product: Compressors
Subject: 7/31-7/41 - Coolant Header Tank Replacement For Aftermarket

MODEL	SERIAL NUMBER
7/31-7/41	320001 - 426995

Doosan Infracore would like to inform its dealers that for the 7/31-7/41 compressors listed above, the coolant header tank is out of production and has been replaced by a new one. When replacing the coolant header tank, order the complete kit (p/n 46550646).

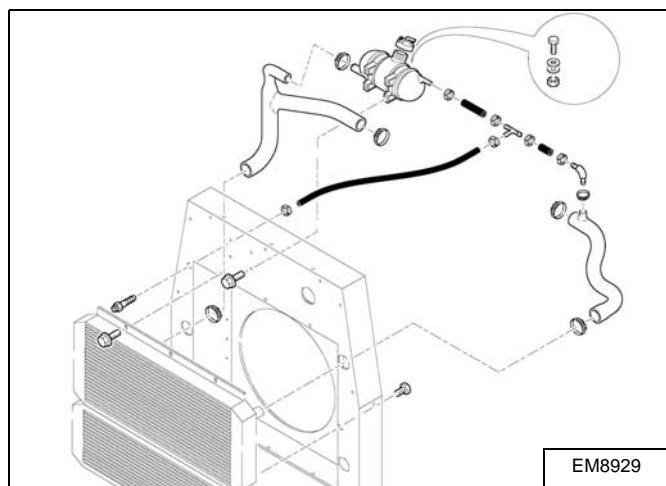
For 7/31-7/41 compressors not listed in this letter, the new coolant header tank was installed in the factory.

Kit Content

ITEM	P/N	DESCRIPTION	QTY.
1	46553372	Bracket, DOGA Header	1
2	36797652	Screw TPG M06-100 x 012 CTD	4
3	22246417	Tank, Header Assy 7/20 (DOGA)	1
4	92096015	Screw M6x16, Flanged, Whizlock	3
5	92304591	Washer M6, Large Type D	3
6	92829316	Locknut M6, Nylon Insert	3
7	22352348	Hose, Header Tank-Cooler 5x1.5	700 mm
8	54576624	Hose, 5/16" (8MM) ID	95 mm
9	46553381	Tee, Plastic Hose 8x6x8 MM	1
10	54576624	Hose, 5/16" (8MM) ID	95 mm
11	46553380	Elbow, Barbed Plastic Hose 10MM x Hose 8MM	1
12	22921092	Clip, Norma Cobra 12	4
13	46553317	Hose, Bottom Water	1

Procedure

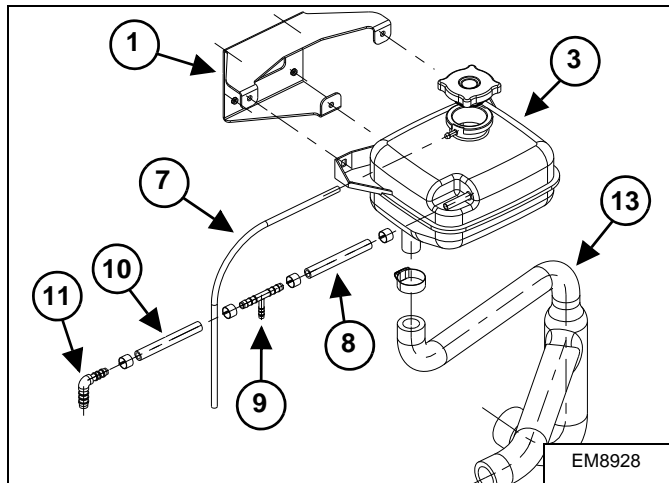
Figure 1



Drain the coolant.

Remove the old coolant header tank as shown [Figure 1].

Figure 2



Install the bracket (Item 1) **[Figure 2]** using the four screws (Item 2).

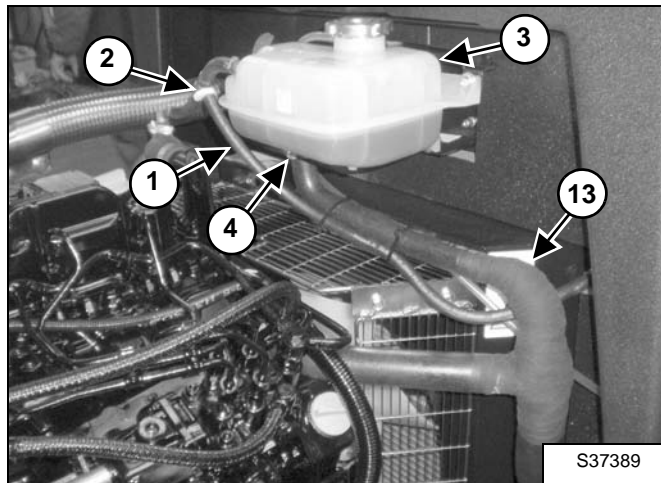
Install the coolant header tank (Item 3) on the bracket (Item 1) **[Figure 2]** using the three screws (Item 4), washers (Item 5) and locknuts (Item 6).

Connect the hose (Item 7) to the coolant header tank (Item 3) **[Figure 2]**.

Install the hose (Item 8), tee hose (Item 9), hose (Item 10) and elbow (Item 11) **[Figure 2]** as shown using the four clips (Item 12).

Insert the elbow (Item 11) **[Figure 2]** in the hose (p/n 22157341) and secure with the existing clip (p/n 95220844).

Figure 3



Insert the tee hose (Item 9) **[Figure 2]** in the hose (p/n 54577176) (Item 1) and secure with the existing clip (p/n 54577267) (Item 2) **[Figure 3]**.

Connect the hose (Item 13) to the coolant header tank (Item 3) **[Figure 2]** and **[Figure 3]** using the existing clip (p/n 92762723) (Item 4) **[Figure 3]**.

Refill the coolant. Run the unit until it is warm. Stop the unit and check the coolant level. Top up if needed.

Tie down the hoses where needed.

Make sure that the hoses are mounted stress free to the coolant header tank.

Check that there is no rubbing of hoses against any other machine parts.