



Doosan Infracore
Portable Power

Service Letter

SL: 40020
Date: 18 March 2011
Product: Compressors
Subject: 7/51 - Coolant Header Tank Replacement For Aftermarket

| MODEL | SERIAL NUMBER |
|-------|-----------------|
| 7/51 | 442000 - 443500 |

Doosan Infracore would like to inform its dealers that for the 7/51 compressors listed above, the coolant header tank is out of production and has been replaced by a new one. When replacing the coolant header tank **[Figure 1]**, kit p/n 46562340 will have to be ordered.

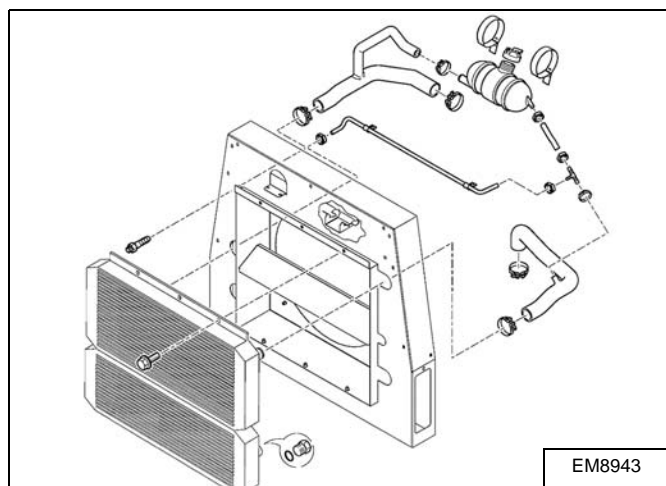
For 7/51 compressors from s/n 443500 onwards (not listed in this letter), the new coolant header tank was installed in the factory.

Kit Content

| ITEM | P/N | DESCRIPTION | QTY. |
|------|----------|--|---------|
| 1 | 46553372 | Bracket, DOGA Header | 1 |
| 2 | 36797652 | Screw TPG M06-100 x 012 CTD | 4 |
| 3 | 22246417 | Tank, Header Assy (DOGA) | 1 |
| 4 | 92096015 | Screw M6x16, Flanged, Whizlock | 3 |
| 5 | 92304591 | Washer M6, Large Type D | 3 |
| 6 | 92829316 | Locknut M6, Nylon Insert | 3 |
| 7 | 22352348 | Hose, Header Tank-Cooler 5x1.5 | 700 mm |
| 8 | 54576624 | Hose, 5/16" (8MM) ID | 500 mm |
| 9 | 46556670 | Connector, Barbed Reduced Hose 8/Hose 10 | 1 |
| 10 | 22921092 | Clip, Norma Cobra 12 | 2 |
| 11 | 54577275 | Clamp, Hose 18,2-20,5 MM | 1 |
| 12 | 22307672 | Hose, Fkd 20/28 MM | 1000 mm |
| 13 | 46556671 | Elbow, Hose 20 MM ID | 1 |
| 14 | 92762723 | Clip, Hose 20 - 30, Worm Driven | 3 |

Procedure

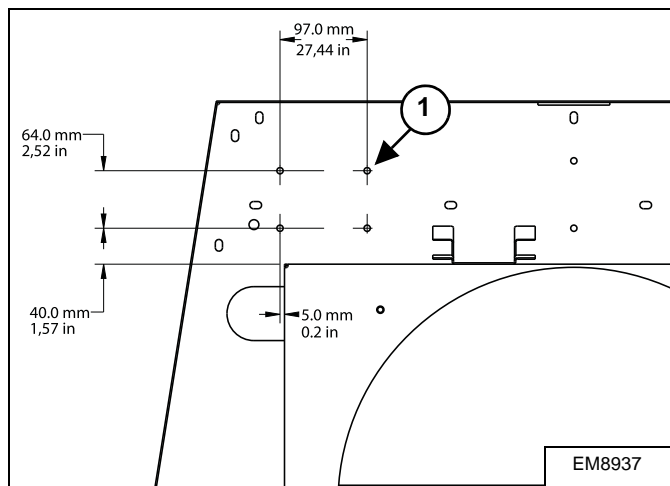
Figure 1



Drain the coolant.

Remove the old coolant header tank as shown **[Figure 1]**.

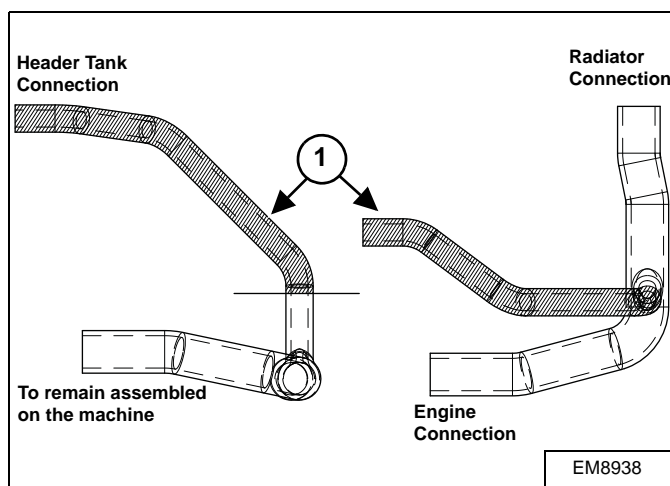
Figure 2



Drill four 7,0 mm (0.28 in) holes (Item 1) [Figure 2] in the cooler wall assembly (p/n 22165351) at the locations shown.

NOTE: DO NOT remove the cooler wall assembly from the unit for drilling.

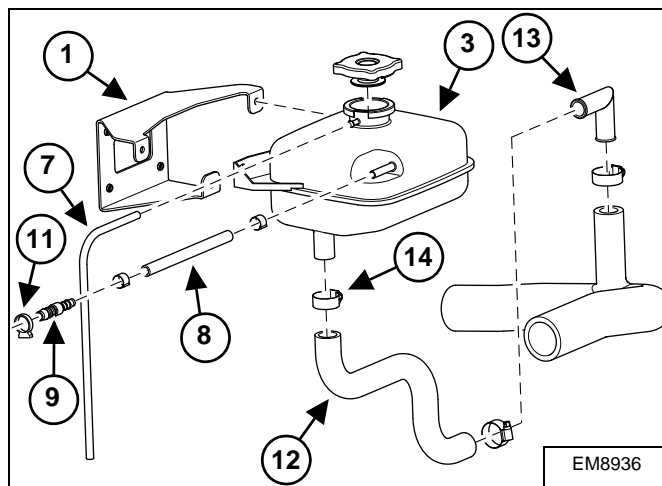
Figure 3



Cut off and discard the part (Item 1) of the hose (p/n 22159362) as shown in [Figure 3].

NOTE: DO NOT remove the hose from the unit for cutting.

Figure 4



Install the bracket (Item 1) [Figure 4] using the four screws (Item 2).

Install the coolant header tank (Item 3) on the bracket (Item 1) [Figure 4] using the three screws (Item 4), washers (Item 5) and locknuts (Item 6).

Connect the hose (Item 7) to the coolant header tank (Item 3) [Figure 4].

Install the hose (Item 8) and connector (Item 9) [Figure 4] as shown using the two clips (Item 10).

Use the hose clamp (Item 11) to connect the connector (Item 9) [Figure 4] to the hose (p/n 54577184) on the machine.

Install the hose (Item 12) and elbow (Item 13) to the coolant header tank (Item 3) and to the hose (p/n 22159362) on the machine using the three clips (Item 14) [Figure 4].

Refill the coolant. Run the unit until it is warm. Stop the unit and check the coolant level. Top up if needed.

Tie down the hoses where needed.

Make sure that the hoses are mounted stress free to the coolant header tank.

Check and correct if any installed component comes into contact with other parts without being secured with tie straps.