



Portable Power

Service Letter

SL: 40031
Date: 7 February 2014
Product: Compressor
Subject: Yanmar Engine Diagnostic Tool (SA-D)

MODEL	SERIAL NUMBER
7/51 Stage IIIA	443500 & Above
7/71 Stage IIIA	522700 & Above
P260 Tier 3	D82

General Information

[Figure 1] The Yanmar engine diagnostic tool must be used to check engine configuration, fault codes, actual values of engine sensors and to write data to the ECU (Electronic Control Unit) when replacing some important engine components (like injector, fuel injection pump, ECU, DPF (Diesel Particulate Filter),...) on electric governed engines (Stage IIIA and Stage IIIB). Without the engine diagnostic tool, only limited basic troubleshooting and repair is possible.

Figure 1

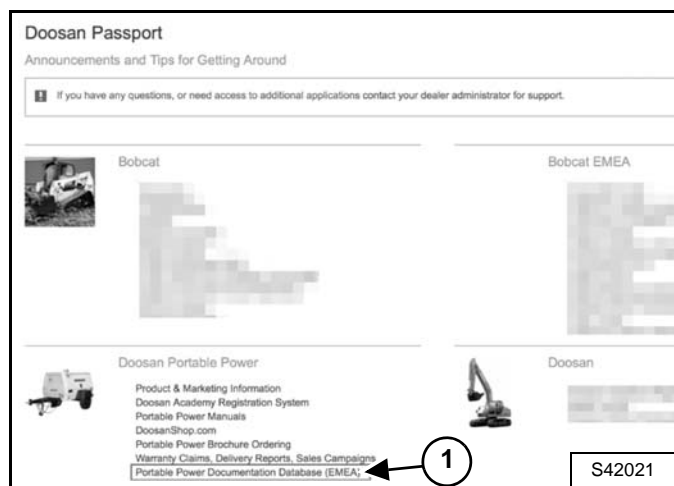


Due to compatibility issues between Yanmar Stage IIIB engines and the Yanmar engine diagnostic YDT (Yanmar Diagnostic Tool) tool, Yanmar has decided to upgrade the old YDT tool and replace it by the SA-D (SmartAssist-Direct) tool.

The SA-D tool will be functional on Stage IIIA and Stage IIIB engines, while the YDT tool can only be used on Stage IIIA engine types.

SA-D (SmartAssist-Direct) tool is using the same hardware **[Figure 1]** as the YDT tool, but the software is under license policy. Please refer to **[Figure 4]** to understand all possible options. Dealers which are equipped with the YDT tool and wish to increase their support capability to include Yanmar Stage IIIB engines need only to download the SA-D software and order a license. A license can be ordered by completing the dedicated "Diagnostic Software And License Order Form" **[Figure 7]** and providing this to your Doosan Service Manager.

Figure 2



To download the SA-D software:
 Access the link "Portable Power Documentation Database (EMEA)" (Item 1) **[Figure 2]** through your Doosan Passport login (<https://www.doosanpassport.com>).

Select [Service] -> [12_Service Software] -> [03_Engines] -> [Yanmar SA-D].

Figure 3

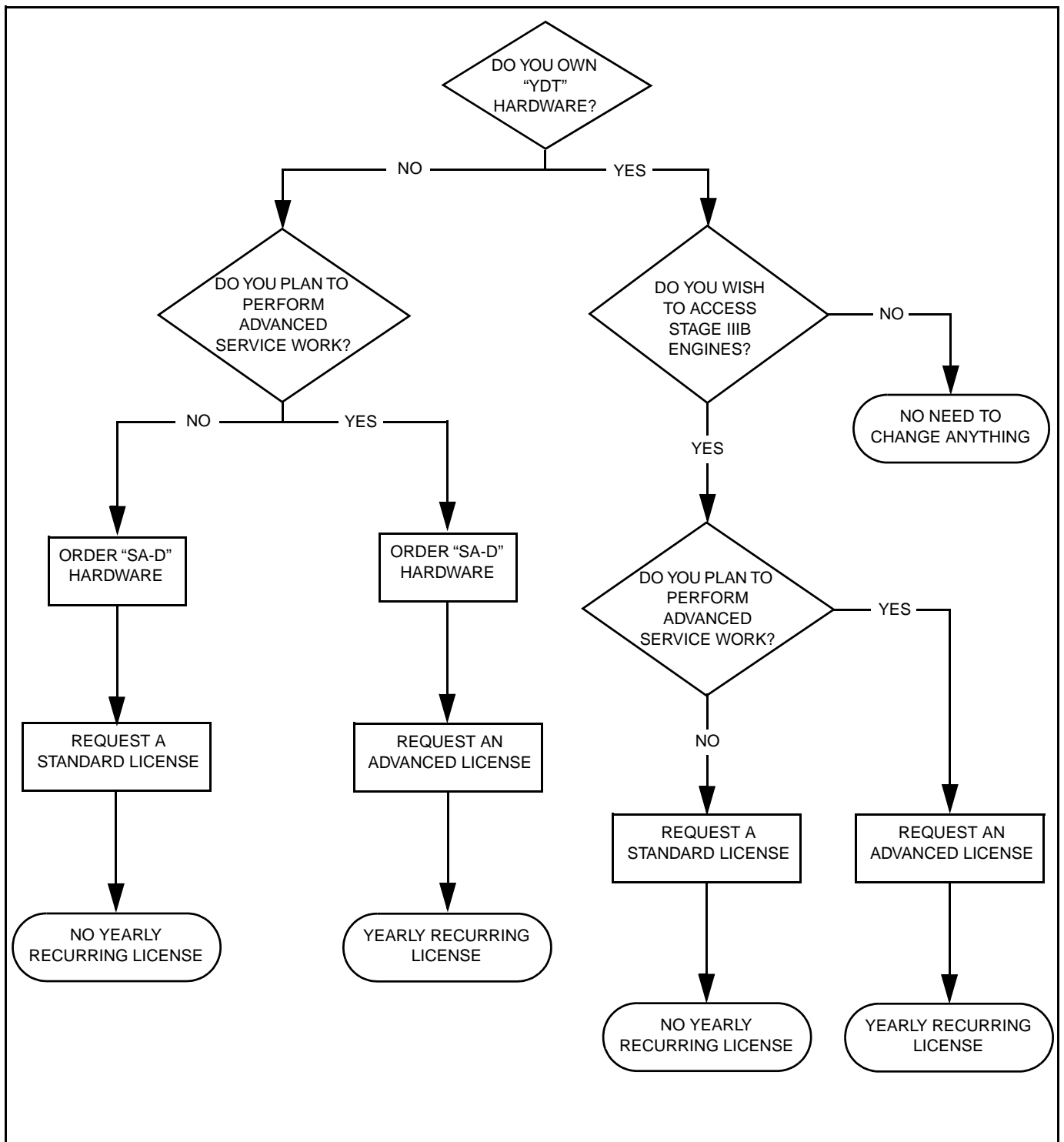
Name	Size	Modified
Parent Directory	-	
Driver Setup.zip	521K	30-Jul-2013 09:51
SMARTASSIST-Direct-Installation_Manual-E.pdf	4.7M	02-Jul-2012 07:54
SMARTASSIST-Direct-Operation_Manual-E.pdf	37M	02-Jul-2012 08:08
unlha32.zip	166K	30-Jul-2013 09:50
Yanmar SA-D.avi	332M	10-Jul-2012 18:47
Yanmar SA-D Installation 20121120 - Dealer version.pdf	1.1M	20-Nov-2012 10:33
YSASSD_Setup.zip	64M	30-Jul-2012 10:33

The SA-D software is “YSASSD_Setup.zip”.

Other information [Figure 3] which has been made available are:

- Driver Setup.zip
- SMARTASSIST-Direct-Installation-Manual-E.pdf
- SMARTASSIST-Direct-Operation-Manual-E.pdf
- unlha32.zip
- Yanmar SA-D.avi
- Yanmar SA-D - Installation 20121120 - Dealer version.pdf

Figure 4



SA-D (SmartAssist-Direct) Versus YDT (Yanmar Diagnostic Tool)

		YDT	SA-D
Function	Applicable Engine	Stage IIIA	All: Stage IIIA and Above
	Guided troubleshooting with link to Engine Service Manual	N/A	Yes, available only for 'Advanced license' type (see [Figure 4])
License	User Management	N/A	Managed per individual user
	Security Check	N/A	Every 3 months through internet, otherwise account will become disabled
Hardware	Parts Cost	charged	Charged, except if you already have the hardware (see [Figure 1]) from the YDT tool
Software	Annual Fee (license)	N/A	Charged, depending on license type

Licensing For SA-D

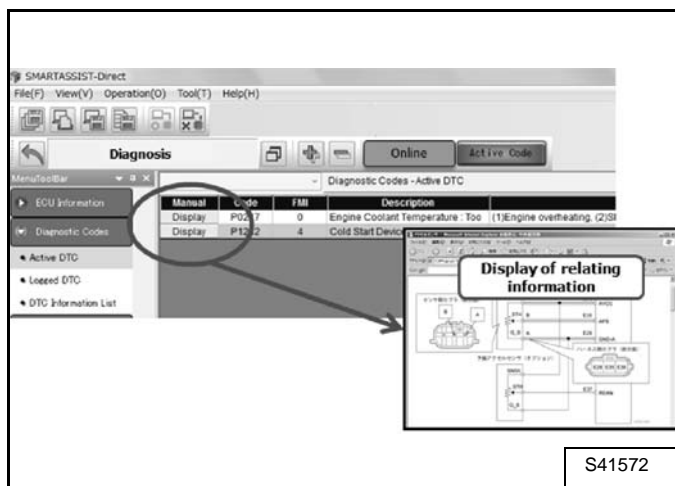
Yanmar offers two operating modes for SA-D:

- **Standard** - Troubleshooting only;
License Fee: no annual fee (for free)
- **Advanced** - Fully functional: troubleshooting, writing / flashing ECU, ... (see table below);
License Fee: 2014 annual fee is fixed at €155

MODE		STANDARD	ADVANCED
Security Check	Security period	90 days	90 days
	Temporary relief of expiration	7 days	7 days
Annual Fee (license)		for free	charged
License update		O	O
Troubleshooting	Basic troubleshooting	O	O
Parts replacement	Rewrite parameter	X	O
	ECU writing	X	O
Logging data save and re-display		X	O
ECU maintenance information upload		O	O
ECU all data save and re-display		O	O
ECU information	ECU data save	O	O
Service information	Guided troubleshooting with link to Engine Service Manual	X	O
	Historical data - Map table	X	O
O: Possible to use. X: Impossible to use.			

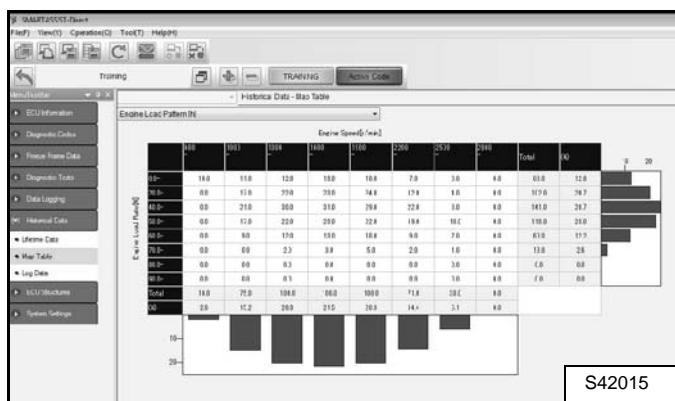
Specific Service Information

Figure 5



The SA-D software has a “Guided troubleshooting with link to Engine Service Manual” [Figure 5] function that links you to service information data in addition to the error code display function. This function enables immediate troubleshooting and provides a hands-on solution.

Figure 6



The SA-D software features also a “Map Table” under the menu “Historical Data” where you can view the ‘engine load pattern’ over time [Figure 6].

NOTE: All the above specific service information is **ONLY** available for the ‘Advanced License’ type.

SA-D Basic Overview

See following link:

<http://prezi.com/zybwwtk85h1b/sa-d-basic-overview/>

Ordering SA-D Tool And Checker Harness

DESCRIPTION	BOBCAT P/N
SA-D Tool	46518064
Checker Harness for Yanmar Stage IIIA	46518072
Checker Harness for Yanmar Stage IIIB	N/A

Diagnostic Software And License Order Form

Figure 7

DOOSAN Doosan Infracore Construction Equipment

DOOSAN* (Doosan*) - DIAGNOSTIC SOFTWARE AND LICENSE ORDER FORM
(SEND A COPY TO YOUR DOOSAN SERVICE MANAGER)

In signing hereunder, I:

(Name) _____ (Function) _____

(Company) _____

(Hereafter the 'User') wish to place an order for the following (MANUAL) OEM diagnostic software and user license:

Number of licenses required: _____ Unit cost: _____ (per year) Total cost: _____ (per year)

Requested user level (if applicable): _____

Hardware serial number(s): _____

Part order confirmation number(s): _____

Moreover, in signing hereunder I understand and agree that the above referenced software and user license is provided in accordance with the following conditions:

1. The software license is a yearly-recurring subscription service. The subscription fee as provided here above will be charged to the User at the beginning of the calendar year and will be valid for that preceding calendar year.
2. The valid and active license entitles the User to automatic and unlimited updates and services as provided by the engine OEM, during the term of the license.
3. The subscription may be cancelled by either party by written notification, no later than September 30th of each year. If the cancellation request is made after this date, the following year's subscription will become due and payable and the software license will continue to run for an additional year period at the end of which, it will terminate.
4. If the User ceases to be an official Doosan distributor, the license will be terminated at the time of terminating the relationship between the User and Doosan.
5. The software license subscription fee is subject to a no-refund policy.
6. The User agrees to refrain from duplicating, modifying, disassembling or reverse-engineering the diagnostic software.
7. The User agrees to refrain from communicating the user names and passwords that were obtained from Doosan or from the engine OEM.
8. The user agrees to refrain from using the software for modifying the characteristics of the equipment or the engine when not authorized by Doosan or the engine OEM to do so.

Date: _____ (dealer stamp)

Signature: _____

Should you require any assistance with your software license ordering or with any item related to the engine diagnostic tool, please do contact your Doosan Service Manager.

(*) "Doosan" means Doosan Infracore, S.A. or Doosan Infracore Europe, S.A.

S41573

Should you require any assistance with your software license ordering or with any item related to the engine diagnostic tool, please contact your Doosan Service Manager.