



Portable Power

Service Letter

Field Modification

Safety Notice

SL: 30009
 Date: 10 December 2012
 Product: Generators
 Subject: Lifting Bail Horizontal Beam Replacement (Y08)

PROCEDURE & WARRANTY GUIDELINES	
Repair Priority	Mandatory - Class AA
Parts Required	Yes - order parts through DoosanShop
Parts Return	Yes - please return replaced part to Puurs through "Warranty Parts Return Form"
Parts Credit	Yes
Labor Credit	Yes - Two (2) hours
Travel Credit	Yes - Two (2) hours for retailed machines
Causal Part Number	333008
Warranty Code	Y08
DVP Application	Yes

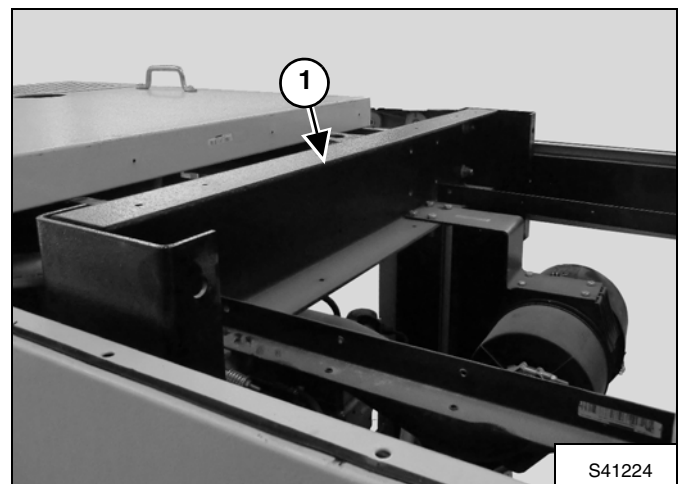
MODEL	SERIAL NUMBER
G80	07G0800001 thru 07G0800005 08G0800006 thru 08G0800009 08G0800011 thru 08G0800014 G0800101 thru G0800144
G100	07G1000002 thru 07G1000029 07G1000032 thru 07G1000039 08G1000030 thru 08G1000031 08G1000041 thru 08G1000057 08G1000059 thru 08G1000074 G1000102 thru G1000113 G1000116 thru G1000367 G1000370 thru G1000372

Doosan Benelux SA asks its dealers to **immediately** contact all owners of affected machines and make arrangements for this modification and to correct all affected machines in your dealer inventory prior to delivery.

This letter provides details for removing the potential safety concern on the affected machines.

[Figure 1] Doosan Benelux SA has determined that the welds on the lifting bail horizontal beam (Item 1) of the generators listed in this letter may not meet engineering specifications, possibly resulting in a partial weld fracture and allowing corrosion to cause further damage.

Figure 1



Safety Concern

This condition could cause the generator to detach from a lifting device when being lifted by the lifting bail horizontal beam, potentially resulting in **serious injury or death or property damage.**

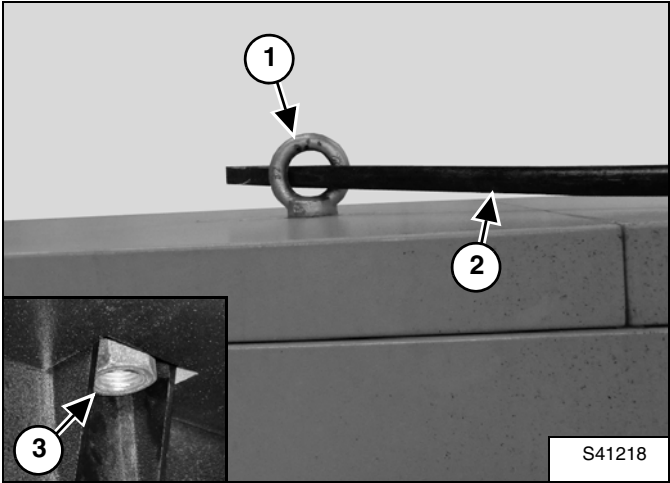
Doosan Benelux SA **has not** received any reports of operator or bystander injury or property damage by this potential condition. If the generator absolutely needs to be lifted prior to correction, make sure all bystanders are kept away from the area around the lifted machine. Do not lift the generator higher than absolutely necessary for loading / unloading purpose. Do not position the generator over any structure or person while lifting. Lift the generator as gently as possible to avoid increased stress on the lifting bail horizontal beam.

Parts

QTY	P/N	DESCRIPTION
1	333008	Lifting Bail Horizontal Beam Kit

Procedure

Figure 2



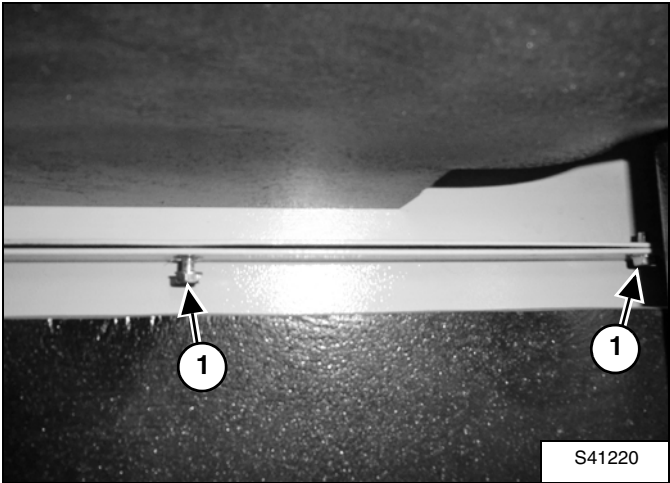
Untighten the lifting eye (Item 1) using a crowbar (Item 2) [Figure 2].

Loosen the lifting eye (Item 1) by hand, remove the nut (Item 3) and lifting eye (Item 1) [Figure 2].

NOTE: Make sure the nut (Item 3) [Figure 2] does not fall into the machine.

Installation: Apply Loctite® 242 to the threads of the lifting eye and silicone sealant on the middle roof panel, under the lifting eye surface.

Figure 3



Remove the six bolts (Item 1) [Figure 3] (three on each side) from the middle roof panel.

Figure 4

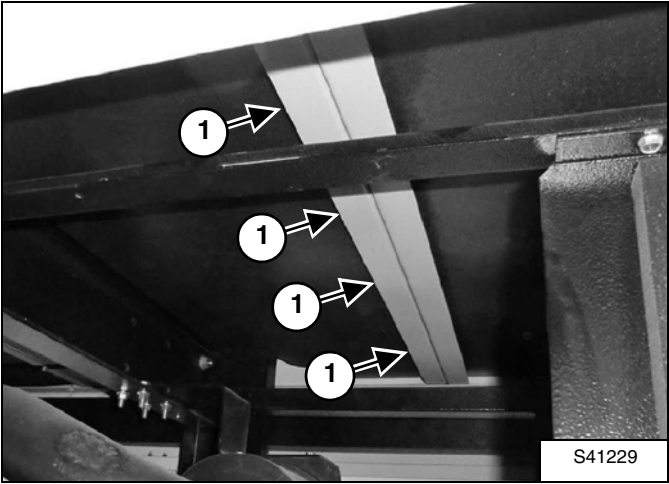
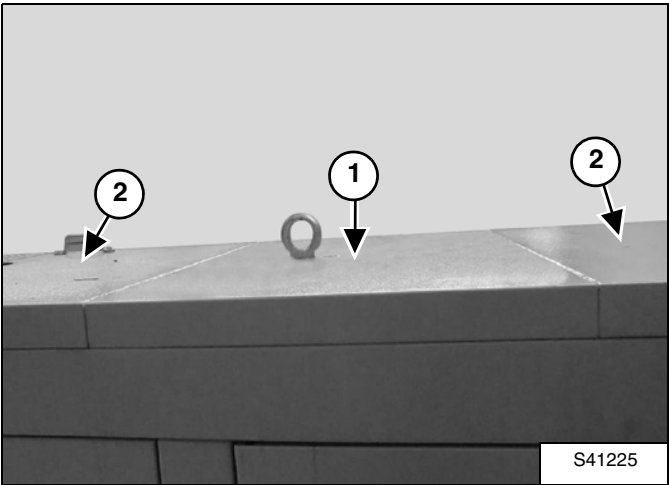
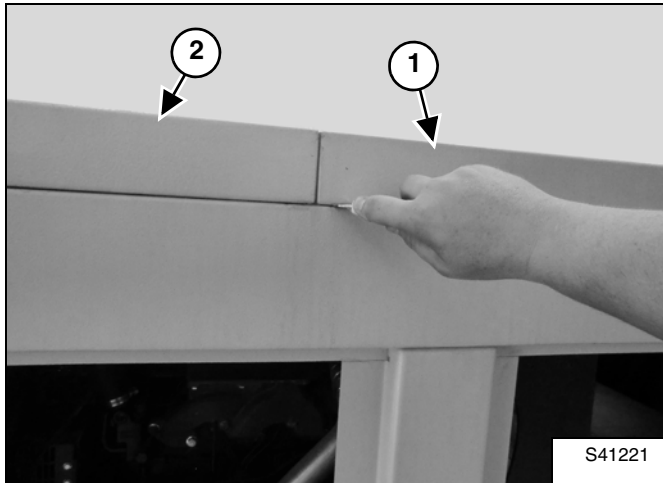


Figure 5



Remove the eight bolts (four on each side) (Item 1) [Figure 4] that fix the middle roof panel (Item 1) to the side roof panels (Item 2) [Figure 5].

Figure 6

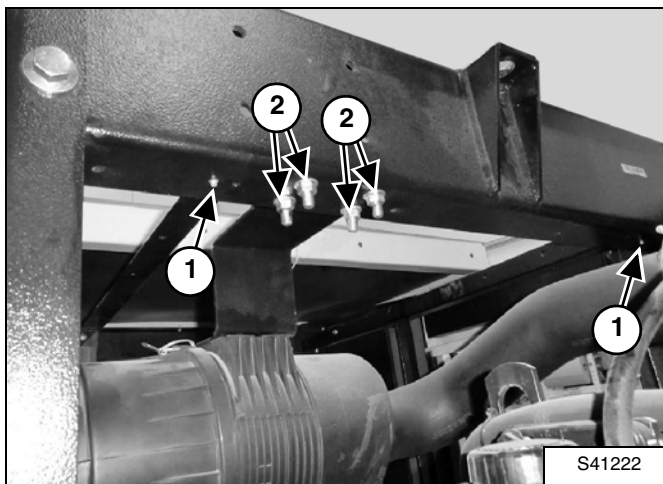


Cut the silicone sealant from around the middle roof panel (Item 1) [Figure 6] and remove the middle roof panel.

Installation: Pay attention to the location of the lifting eye hole when re-installing the middle roof panel. Apply a thin line of silicone sealant around the middle roof panel.

Remove the remaining silicone sealant from the side roof panels (Item 2) [Figure 6].

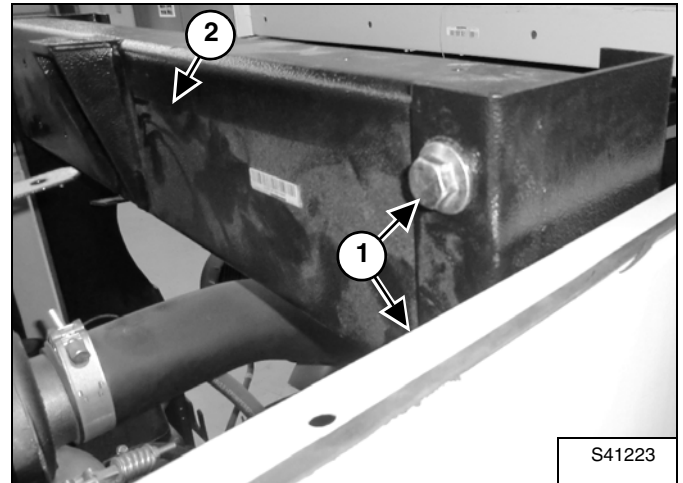
Figure 7



Remove the two bolts (Item 1) [Figure 7] that fix the power pedestal support bars to the lifting bail horizontal beam.

Remove the four bolts and nuts (Item 2) [Figure 7] and put the air filter aside.

Figure 8



Remove the four bolts (Item 1) and nuts from the lifting bail horizontal beam (Item 2) [Figure 8] and remove the lifting bail horizontal beam from the machine. Keep the bolts and nuts for reuse.

NOTE: Support the lifting bail horizontal beam (Item 2) properly when removing the four bolts (Item 1) [Figure 8] and nuts.

Install the new lifting bail horizontal beam. Apply Loctite® 242 to the threads of the bolts (Item 1) [Figure 8], install and tighten the four bolts and nuts to 226 N•m (167 ft-lb) torque.

Completely re-assemble the machine.