



DIRECT TO:

PARTS MANAGER ☒
SERVICE MANAGER ☒
SALES MANAGER ☒

DOOSAN PORTABLE POWER TECHNICAL SERVICE BULLETIN

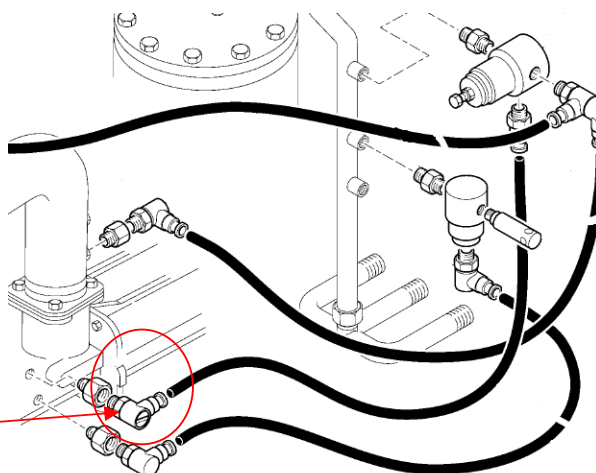
Bulletin #: COMP-2008-003
Date: November, 27 2008
Product: COMPRESSORS
Subject: Regulation check valve

MODELS	SERIAL NUMBER
7/26	
7/31	
7/41	
7/51	

Issue:

The installed check valve could in certain conditions allow system air to flow back into the air inlet.

In that case the airfilter material would be contaminated and inlet airflow would be compromised.



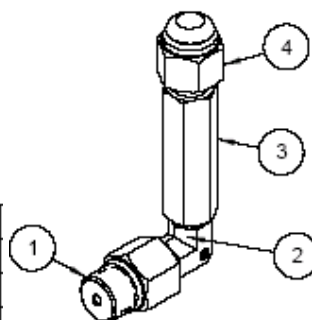
Solution:

The original 90° check valve is replaced by a straight body type which consists of 4 pieces in total.

Parts:

Necessary parts are released with cpn 23310766 ,this kit includes the parts in the table below.

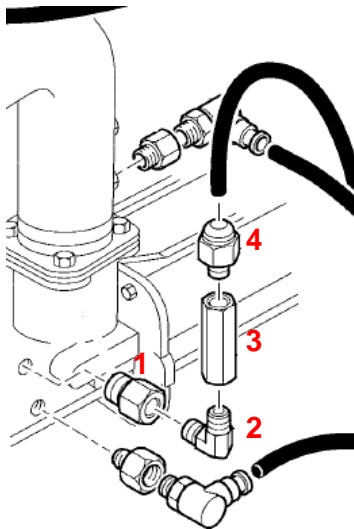
4	1	23309578	CONNECTOR, MALE BSPT (1/8"BSPT X 8 TUBE)
3	1	92812932	VALVE, NON RETURN 1/8" BSPP
2	1	23309560	ELBOW, MALE BSPT (1/8"BSPTx1/8"BSPT)
1	1	23291321	ORIFICE FITTING



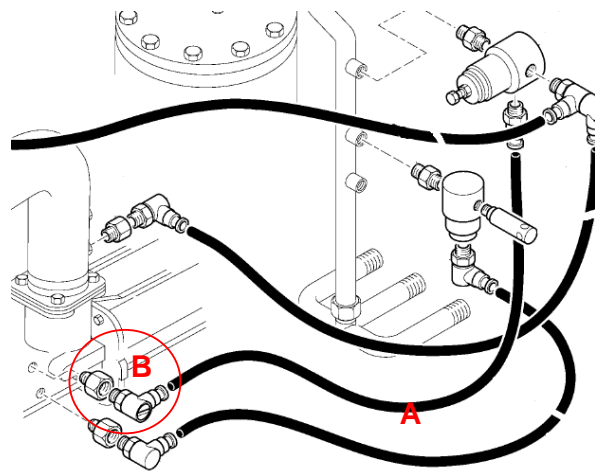
Instruction:

- 1- Push on quick release fitting (A) and pull black tubing from fitting.
- 2- Remove fitting (B) from the housing and discard.
- 3- Install the above (kit) components in the orifice where (B) was removed ,apply loctite 577 when assembling these 4 components.
- 4- Push black tubing into quick release fitting (4) and test run compressor.

NEW



OLD



Note:

Pipe sealant (Loctite 577) should be used moderately when assembling components 1-2-3 and 4, excess sealant could cause the check valve and regulating valve to fail.

New setup was installed at factory from below serialnumbers onwards.

MODELS	SERIAL NUMBER
7/26	108138→
7/31	319312→
7/41	426012→
7/51	443061→

Reimbursement:

Standard warranty conditions apply.