

Bulletin #: LT-2006-001 **Date:** 16/05/06

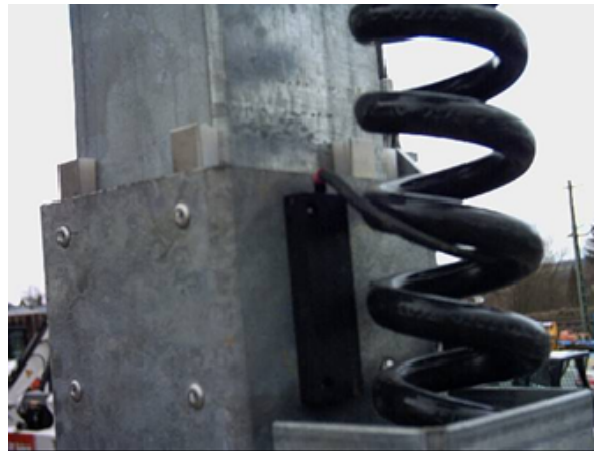
Product: ☐ Compressor ☐ Generator ☒ Light Tower ☐ Tools

Subject: LT6 mast top sensor wire routing improvement

Models

LT6

It has been noted that the main light cable could damage the mast top sensor wire during operation of the mast as shown in Picture 1.



Picture 1

To avoid this situation we recommend you to improve the routing of the sensor wire by fitting a wire tie as shown below. As a final solution the sensor will be relocated with the new 2006 mast design.



Picture 2

Doosan purchased Bobcat Company from Ingersoll-Rand Company in 2007. Any reference to Ingersoll-Rand Company or use of trademarks, service marks, logos, or other proprietary identifying marks belonging to Ingersoll-Rand Company in this manual is historical or nominative in nature, and is not meant to suggest a current affiliation between Ingersoll-Rand Company and Doosan Company or the products of either.