



Technical Service Bulletin

Doosan purchased Bobcat Company from Ingersoll-Rand Company in 2007. Any reference to Ingersoll-Rand Company or use of trademarks, service marks, logos, or other proprietary identifying marks belonging to Ingersoll-Rand Company in this manual is historical or nominative in nature, and is not meant to suggest a current affiliation between Ingersoll-Rand Company and Doosan Company or the products of either.

Number: PC12-039

FOR INFORMATION ONLY

Date: May 07, 2007
Revised (10-12)

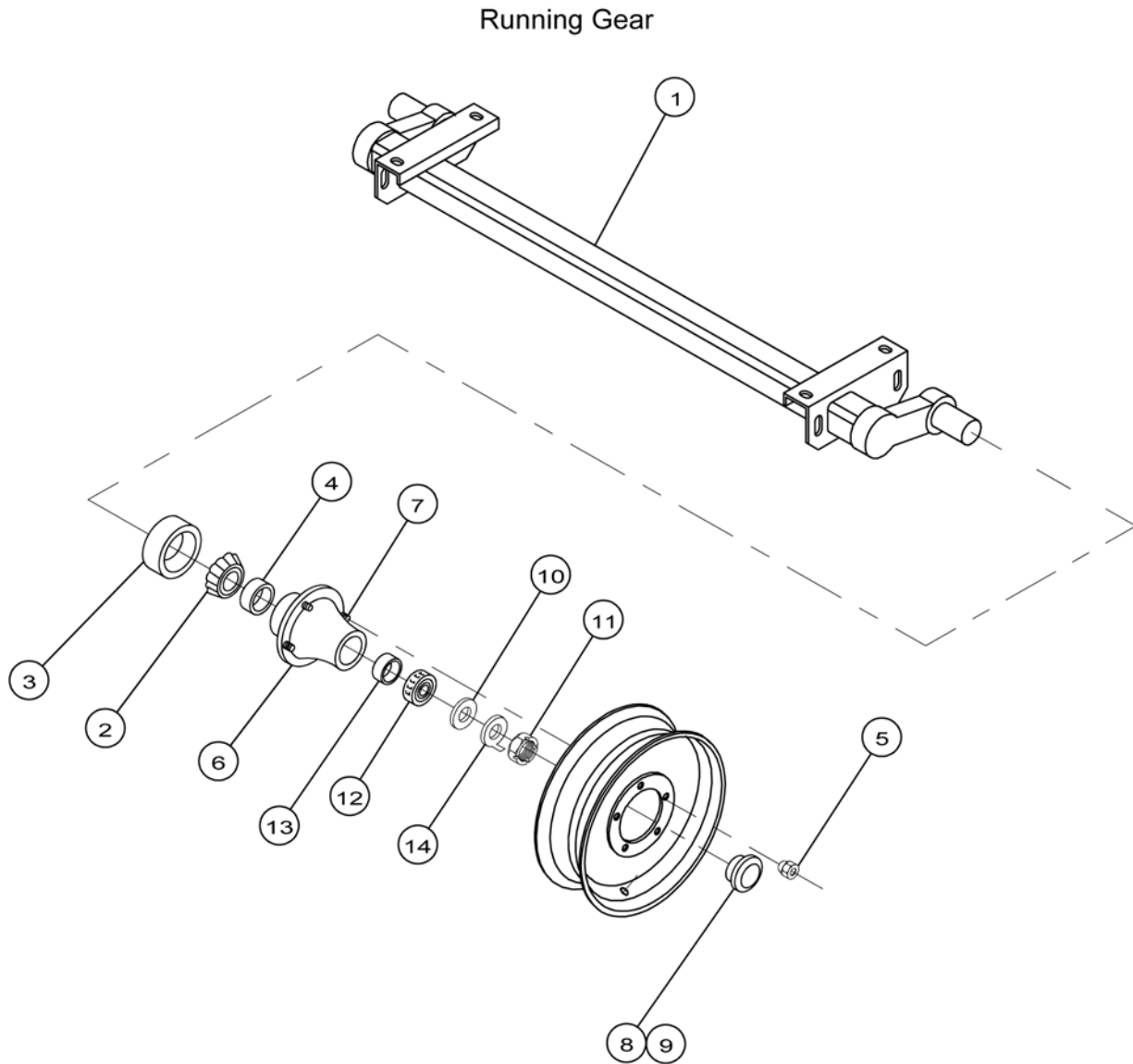
Subject: Changes to Running Gear in parts manuals

Symptoms: Current manual shows electric brakes, unit come standard, with no brakes.

MODELS AFFECTED:

G25B
PowerSource

Remedy: Refer to the following page that shows the correct parts breakdown for the actual axle that is used in G25B PowerSource units.



ITEM	COMM. NO.	DESCRIPTION	QTY	DIMENSIONS/NOTES
1	22607279	Axle Assembly	1	
2	35361864	Bearing, Inner	2	
3	35391101	Seal, Grease	2	
4	35361872	Cup, Inner Bearing	2	
5	35315274	Nut, Wheel	10	
6	22608772	Hub Assembly w/ Studs	2	
7	35361898	Stud	10	
8	35391127	Cap, Dust/Grease	2	
9	35391135	E-Z Lube Rubber Boot	2	
10	35315209	Washer, Spindle	2	
11	35315217	Nut, Spindle	2	
12	35315191	Bearing, Outer	2	
13	35315183	Cup, Outer Bearing	2	
14	35390012	Washer, Tang	2	