



# INSTALLATION INSTRUCTION

## Portable Power

Instruction: 46551237-EN

Product: DOOSAN PORTABLE POWER  
COMPRESSORS

Subject: SERVICE KIT FOR HOERBIGER  
REGULATOR INSTALL

Kit Number	46551219
------------	----------

MODEL	SERIAL NUMBER
7/120	Produced after 6-2007
7/170	Produced after 6-2007
9/110	Produced after 6-2007
9/235	Produced after 6-2007
10/105	Produced after 6-2007
10/125	Produced after 6-2007
14/85	Produced after 6-2007
14/115	Produced after 6-2007

ESTIMATED INSTALLATION TIME: 1 HOUR\*

\*Approximate time only; actual time may vary.

## GENERAL INFORMATION

To avoid duplication, instructions may refer you to the Operation & Maintenance Manual or the Service Manual for more detailed instructions.

Read this instruction completely to become familiar with the procedure before beginning the installation.

Use the following procedure to install this kit.

Compressed air is dangerous if incorrectly handled. Before doing any work on the unit, ensure that all pressure is vented from the system and that the machine cannot be started accidentally (refer to the Service Manual for the correct procedure).

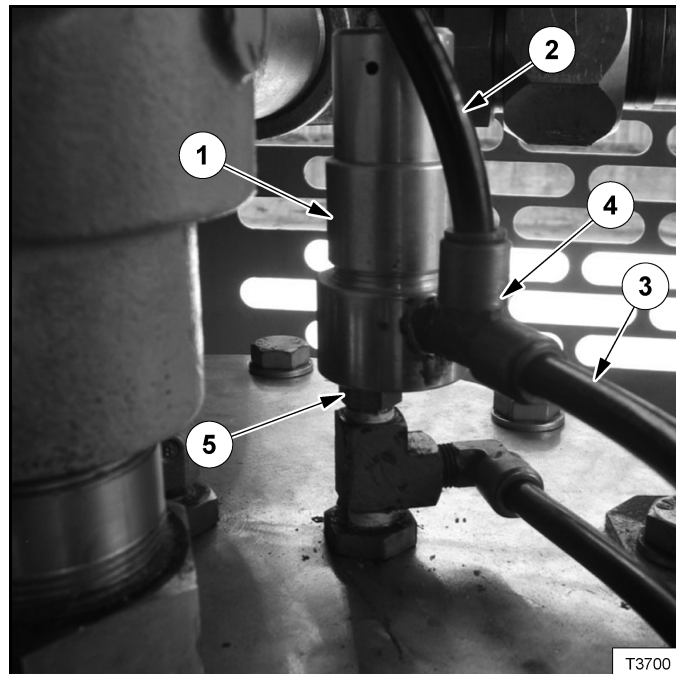
## WARNING

Wear safety glasses to prevent eye injury when any of the following conditions exist:

- Pressurised systems or other stored energy components
- Flying debris or loose material is present
- Tools are being used.

## INSTRUCTION

Figure 1



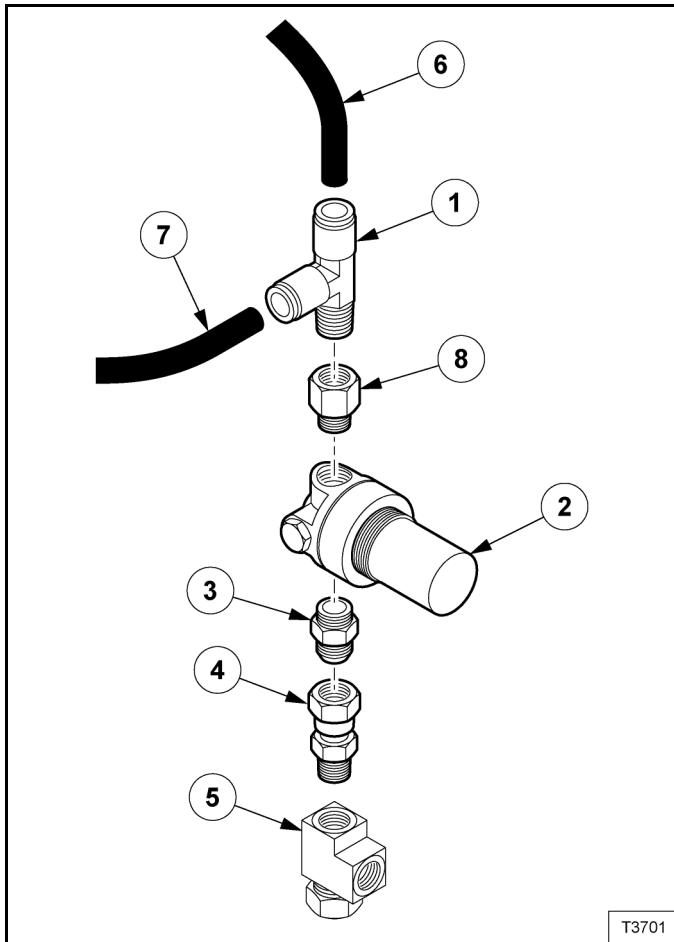
Proportion controller prp (Item 1) [Figure 1] to be replaced.

Disconnect the two hoses (Items 2 and 3) [Figure 1].

Remove the 'T'-fitting (Item 4) [Figure 1].

Remove the proportion controller prp (Item 1) and connector (Item 5) [Figure 1].

**Figure 2**



Using components from the service kit, assemble the proportion controller prp sub-assembly.

Install adaptor (CCN 54625702) (Item 8) from the service kit to the Line Out port of the new controller (CCN 46553810) (Item 2) **[Figure 2]** from the service kit.

Install 'T' - fitting (Item 1) from removed proportion controller prp to the adaptor (Item 8) **[Figure 2]**.

Install male connector (CCN 92478387) (Item 3) **[Figure 2]** to the Line In port (marked with an arrow) of the controller.

Install female tube connector (CCN 35367846) (Item 4) to the male connector (Item 3) **[Figure 2]**.

Install proportion controller sub-assembly to the 'T' fitting (Item 5) **[Figure 2]** of the separator tank ('Line In' connection side to separator tank).

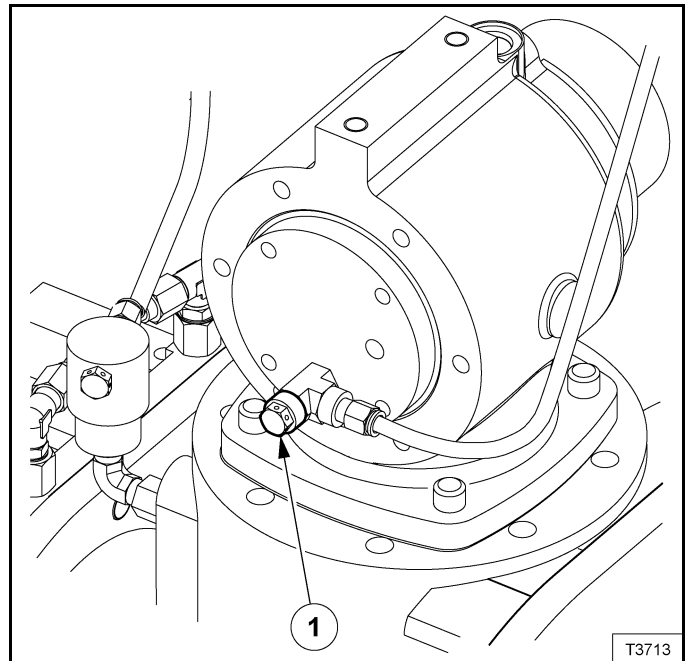
Reconnect hoses (Items 6 and 7) **[Figure 2]** to 'T' fitting on proportion controller.

**Note**

- **Ensure that there are no kinks or damage to the hoses.**

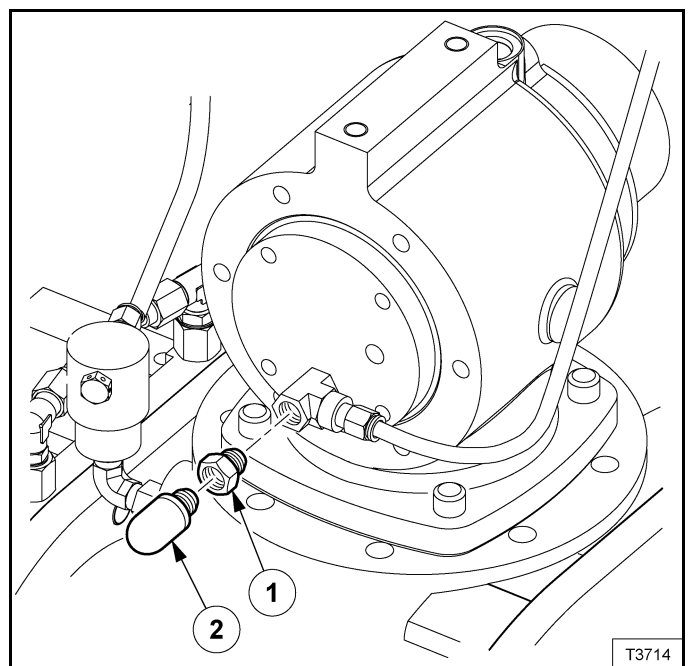
The original regulation orifice-silencer needs to be replaced by the items provided in the kit (46622654 - ORIFICE 2,2 mm DIA x 1/4NPT and 35322395 - SILENCER).

**Figure 3**



Remove the orifice-silencer (Item 1) **[Figure 3]**.

**Figure 4**



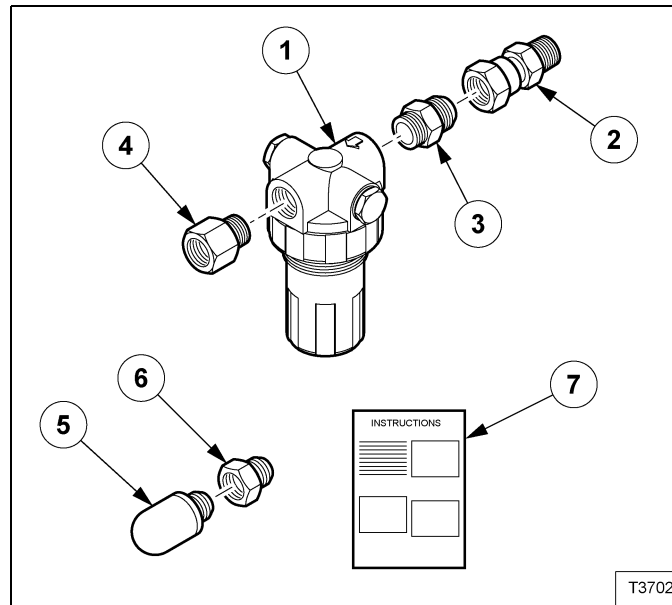
Install orifice (CCN 46622654) (item 1) **[Figure 4]** to the 'T' - fitting.

Install silencer (CCN 35322395) (item 2) to the orifice (CCN 46622654) (item 1) **[Figure 4]**

Return the unit to service and operate to ensure correct functioning (refer to the Operation & Maintenance Manual for the correct procedure).

## CUSTOMER PACKING LIST

(Kit #46551219) Service Kit of Hoerbiger Regulator



REF.	PART NO.	DESCRIPTION	QTY.
1	46553810	PROPORTION CONTROLLER PRP	1
2	35367846	CONNECTOR, 0.25 NPT x 0.38 FEMALE STEEL TUBE	1
3	92478387	CONNECTOR, MALE 1/4" BSPT – 6 JIC	1
4	54625702	ADAPTOR 1/4" BSPT – 1/4" NPT	1
5	35322395	SILENCER, PNEUMATIC 1/4"	1
6	46622654	ORIFICE 2,2 mm DIA X 1/4" NPT	1
7	46551237	INSTRUCTIONS	1