



INSTALLATION INSTRUCTION

Portable Power

Instruction: 46551238-EN
Product: DOOSAN PORTABLE POWER COMPRESSORS
Subject: SERVICE KIT FOR HOERBIGER REGULATOR INSTALL

Kit Number	46551220
------------	----------

MODEL	SERIAL NUMBER
7/120	Produced before 6-2007
7/170	Produced before 6-2007
9/110	Produced before 6-2007
9/235	Produced before 6-2007
10/105	Produced before 6-2007
14/85	Produced before 6-2007
14/115	Produced before 6-2007

ESTIMATED INSTALLATION TIME: 1 HOUR*

*Approximate time only; actual time may vary.

GENERAL INFORMATION

To avoid duplication, instructions may refer you to the Operation & Maintenance Manual for more detailed instructions.

Read this instruction completely to become familiar with the procedure before beginning the installation.

Use the following procedure to install this kit.

Compressed air is dangerous if incorrectly handled. Before doing any work on the unit, ensure that all pressure is vented from the system and that the machine cannot be started accidentally (refer to the Service Manual for the correct procedure).



WARNING

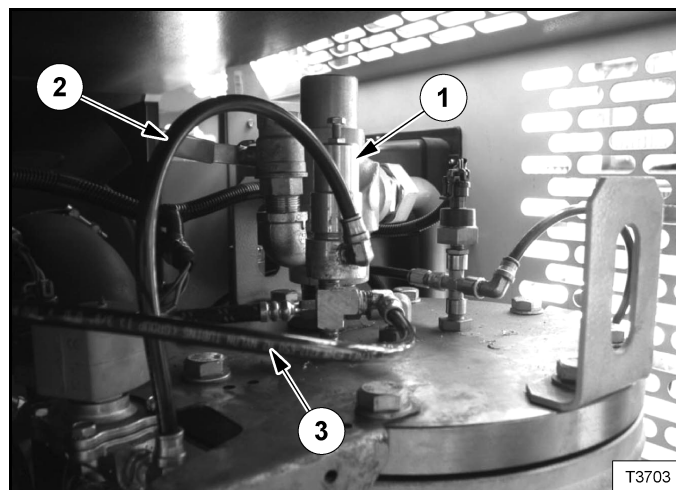
Wear safety glasses to prevent eye injury when any of the following conditions exist:

- Pressurised systems or other stored energy components
- Flying debris or loose material is present
- Tools are being used.

INSTRUCTION

Aluminium type pressure regulators will be replaced by the new style Hoerbiger regulator. The initial change will require the use of the kit mentioned in the instruction letter as the pressure regulator is not the only item to be changed at this time. The regulation system is tuned to achieve a certain response from the engine as well as the intake valve at a pre-determined regulation pressure. Failure to replace all components when installing the new pressure regulator will result in regulation system instability and possibly component failures.

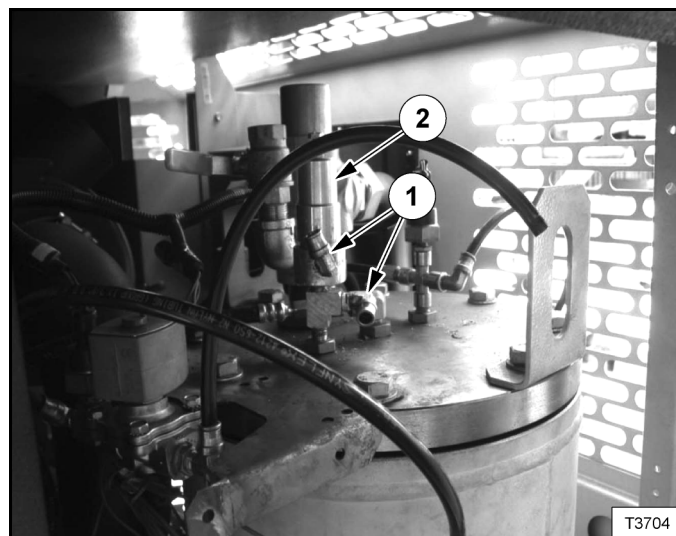
Figure 1



Pressure regulator (Item 1) [Figure 1] to be replaced.

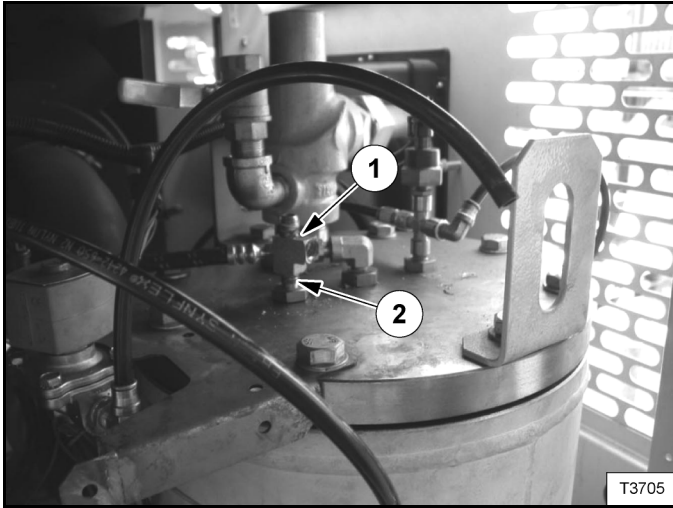
Disconnect the hoses (Items 2 and 3) [Figure 1].

Figure 2



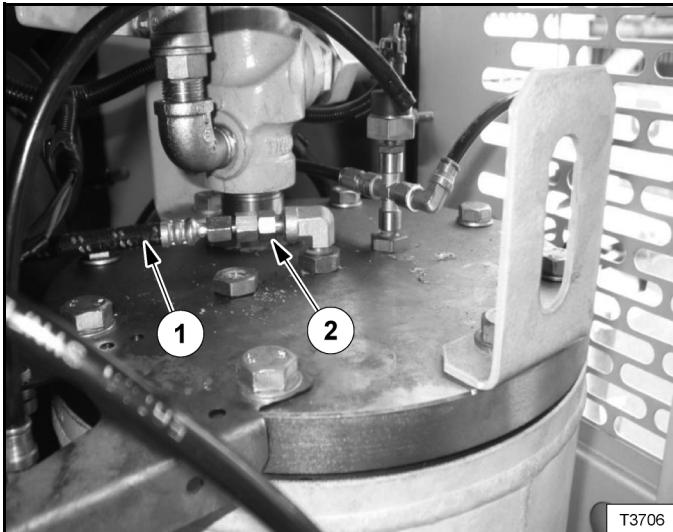
Remove two elbow connectors (Items 1) and pressure regulator (Item 2) [Figure 2].

Figure 3



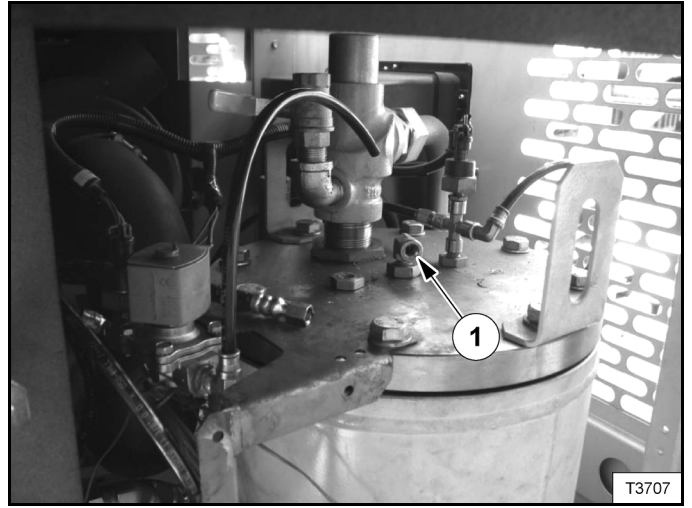
Remove 'T' - fitting (Item 1) and connector (Item 2) [Figure 3].

Figure 4



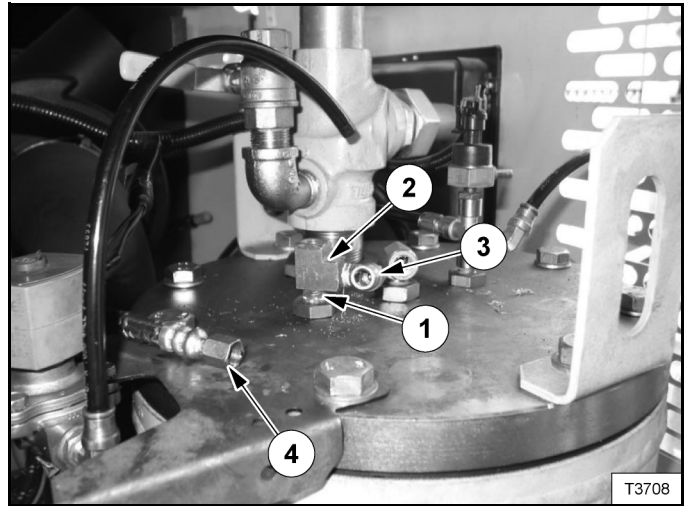
Disconnect hose (Item 1) and remove coupling (Item 2) [Figure 4] from scavenge pipe outlet.

Figure 5



Rotate elbow (Item 1) [Figure 5] through 90 degrees to clear the new regulator location.

Figure 6

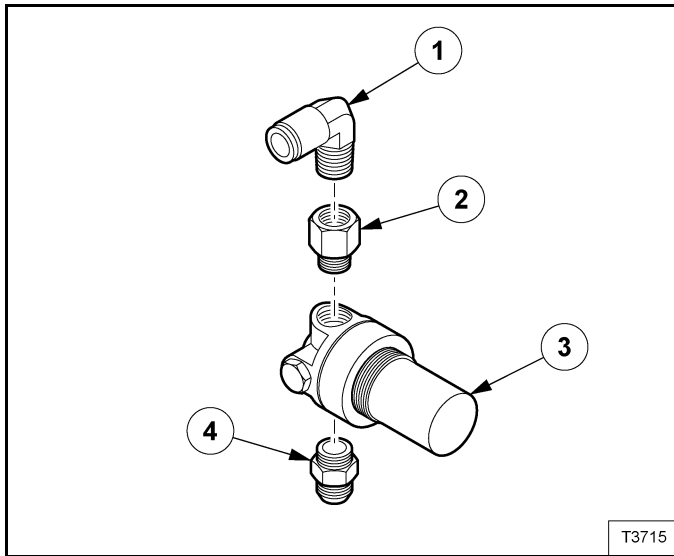


Refit 'T' - fitting (Item 2) and connector (Item 1) [Figure 6].

(Item 2) [Figure 6] is rotated through 180 degrees to its previous mounting position.

Reposition elbow (Item 3) and reconnect coupling and hose (Item 4) [Figure 6].

Figure 7



Using components from the service kit, assemble the proportion controller prp sub-assembly. Install adaptor (CCN 54625702) (Item 2) to the Line Out port of the new regulator (CCN 46553810) (Item 3) **[Figure 7]** from the service kit.

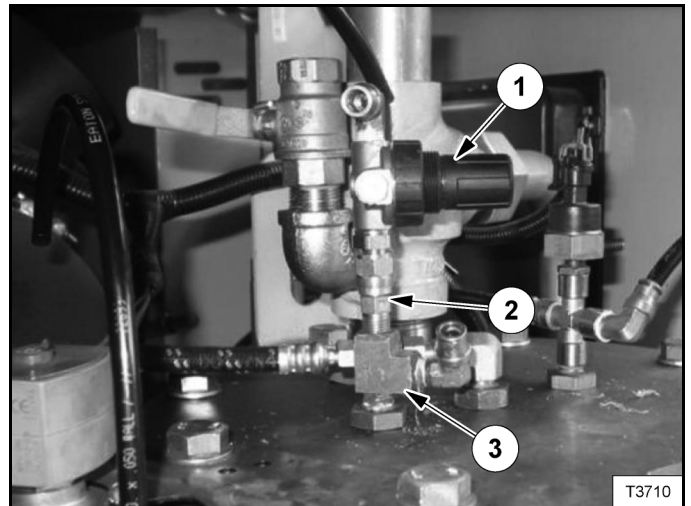
Install elbow (Item 1) from the removed pressure regulator to the adaptor (CCN 54625702) (Item 2) **[Figure 7]**.

Install male connector (CCN 92478387) (Item 4) **[Figure 7]** to the Line In port (marked with an arrow) **[Figure 8]** of the regulator.

Figure 8



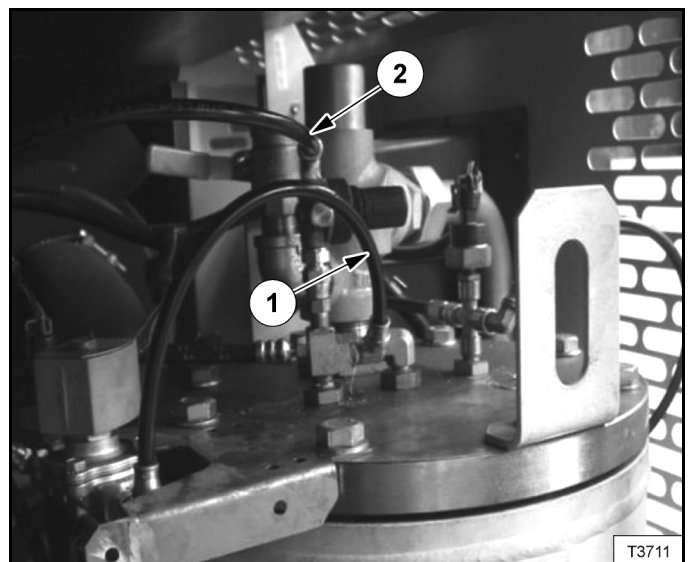
Figure 9



Install female tube connector (CCN 35367846) (Item 2) to 'T' fitting (Item 3) **[Figure 9]**.

Install Line In port of proportion controller sub-assembly (Item 1) to female tube connector (Item 2) **[Figure 9]**.

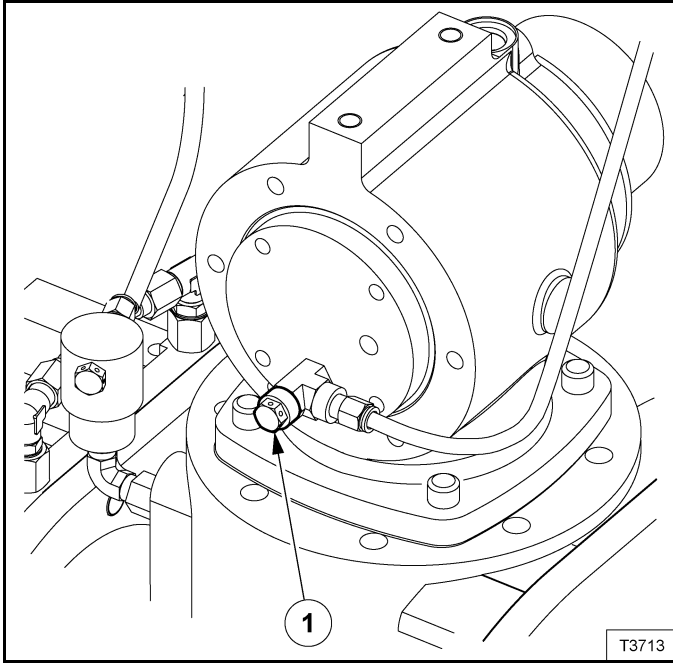
Figure 10



Reconnect the hoses (Items 1 and 2) **[Figure 10]**.

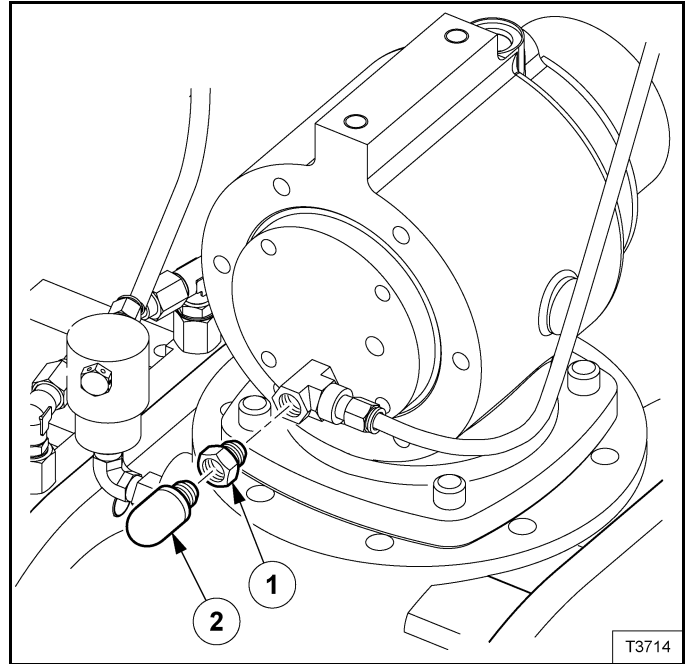
The original regulation orifice-silencer needs to be replaced by the items provided in the kit (46622654 - ORIFICE 2,2 mm DIA x 1/4NPT and 35322395 - SILENCER).

Figure 11



Remove the orifice-silencer (Item 1) **[Figure 11]**.

Figure 12



Install orifice (CCN 46622654) (item 1) **[Figure 12]** to the 'T' - fitting.

Install silencer (CCN 35322395) (item 2) to the orifice (CCN 46622654) (item 1) **[Figure 12]**

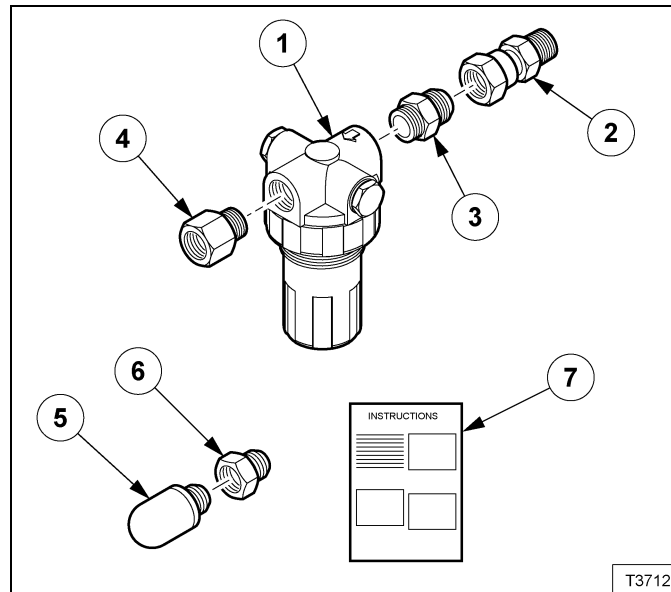
Note

- **Ensure that there are no kinks or damage to the hoses.**

Return the unit to service and operate to ensure correct operation (refer to the Operation & Maintenance Manual for the correct procedure).

CUSTOMER PACKING LIST

(Kit #46551220) Service Kit of Hoerbiger Regulator



REF.	PART NO.	DESCRIPTION	QTY.
1	46553810	PROPORTION CONTROLLER PRP	1
2	35367846	CONNECTOR, 0.25 NPT x 0.38 FEMALE STEEL TUBE	1
3	92478387	CONNECTOR, MALE 1/4" BSPT – 6 JIC	1
4	54625702	ADAPTOR 1/4" BSPT – 1/4" NPT	1
5	35322395	SILENCER, PNEUMATIC 1/4"	1
6	46622654	ORIFICE 2,2 mm DIA X 1/4" NPT	1
7	46551238	INSTRUCTIONS	1