



INSTALLATION INSTRUCTION

Portable Power

Instruction: 46642299-EN

Product: DOOSAN PORTABLE POWER COMPRESSORS

Subject: SERVICE KIT FOR HOERBIGER REGULATOR INSTALL

Kit Number	46635940
------------	----------

MODEL	SERIAL NUMBER
7/41	

ESTIMATED INSTALLATION TIME: 1 HOUR*

*Approximate time only; actual time may vary.

GENERAL INFORMATION

To avoid duplication, instructions may refer you to the Operation & Maintenance Manual for more detailed instructions.

Read this instruction completely to become familiar with the procedure before beginning the installation.

Use the following procedure to install this kit.

Compressed air is dangerous if incorrectly handled. Before doing any work on the unit, ensure that all pressure is vented from the system and that the machine cannot be started accidentally (refer to the Service Manual for the correct procedure).

WARNING

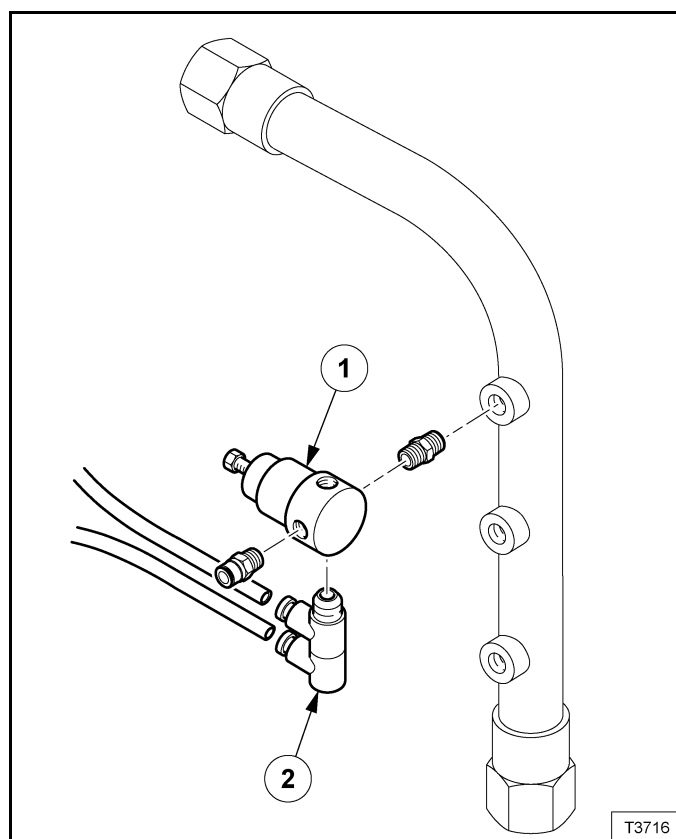
Wear safety glasses to prevent eye injury when any of the following conditions exist:

- Pressurised systems or other stored energy components
- Flying debris or loose material is present
- Tools are being used.

INSTRUCTION

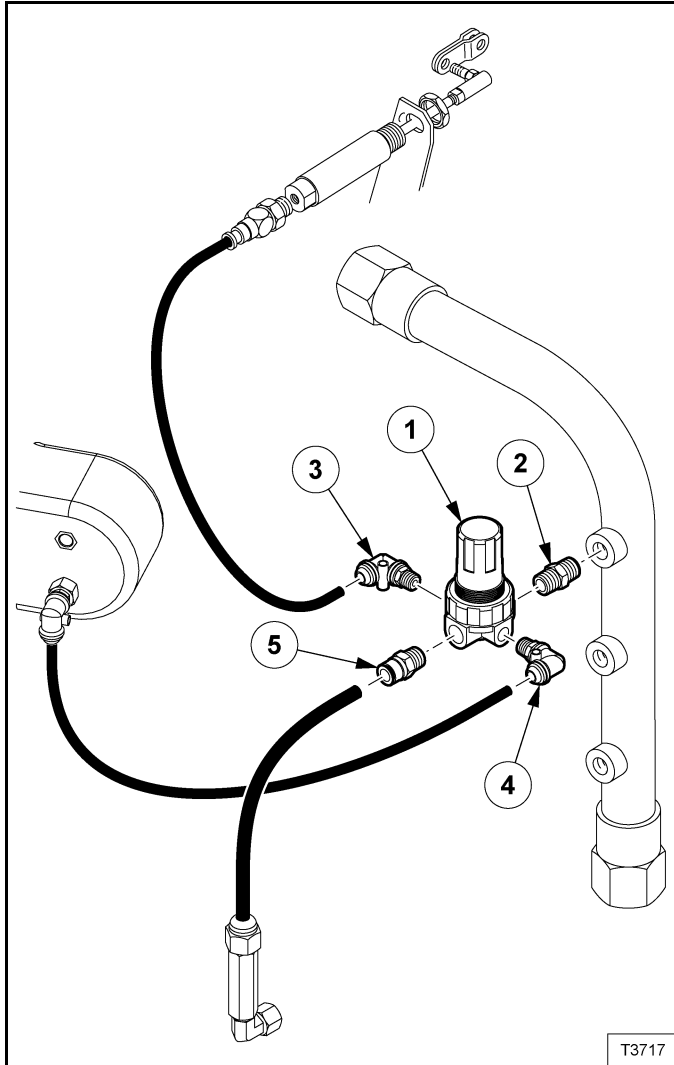
Aluminium type pressure regulators will be replaced by the new style Hoerbiger regulator. The initial change will require the use of the kit mentioned in the instruction letter as the pressure regulator is not the only item to be changed at this time. The regulation system is tuned to achieve a certain response from the engine as well as the intake valve at a pre-determined regulation pressure. Failure to replace all components when installing the new pressure regulator will result in regulation system instability and possibly component failures.

Figure 1



Disconnect and remove existing regulator (CCN 35355106) (item 1) and elbow (CCN 92794262) (Item 2) [Figure 1] – these items to be discarded.

Figure 2



Install regulator (CCN 46635923) (Item 1) **[Figure 2]** from the service kit with the plastic part in the upright position.

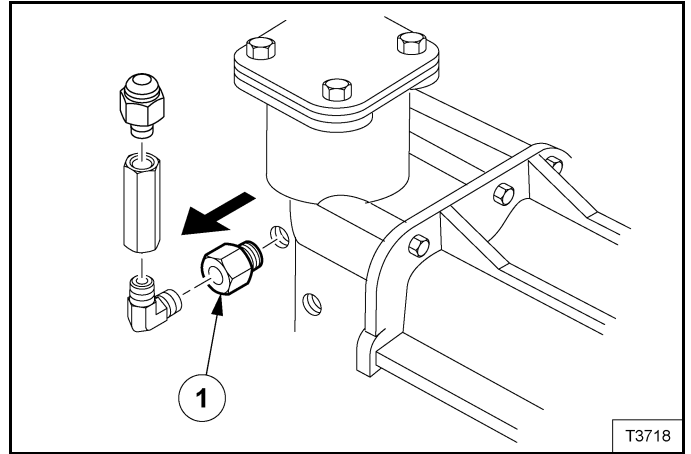
Install nipple (CCN 92005701) (Item 2) **[Figure 2]** to the inlet port of the regulator (marked with an arrow).

Install elbow (CCN 54403209) (Item 3) **[Figure 2]** from the service kit to the nipple and connect existing nylon tube from speed cylinder.

Install elbow (CCN 54403209) (Item 4) **[Figure 2]** from the service kit to the nipple and connect existing nylon tube from orifice at air intake pipe.

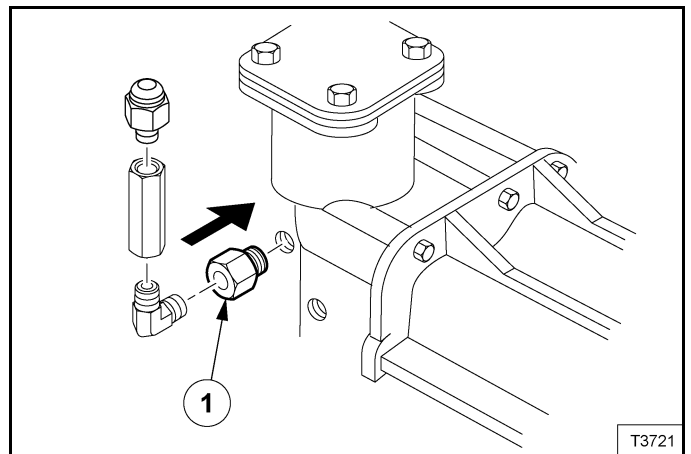
Install adaptor (CCN 92931401) (Item 5) **[Figure 2]** to the regulator and connect existing nylon tube to the cylinder.

Figure 3



Disconnect and remove existing orifice (CCN 23291321) (Item 1) **[Figure 3]** from unloader and discard.

Figure 4

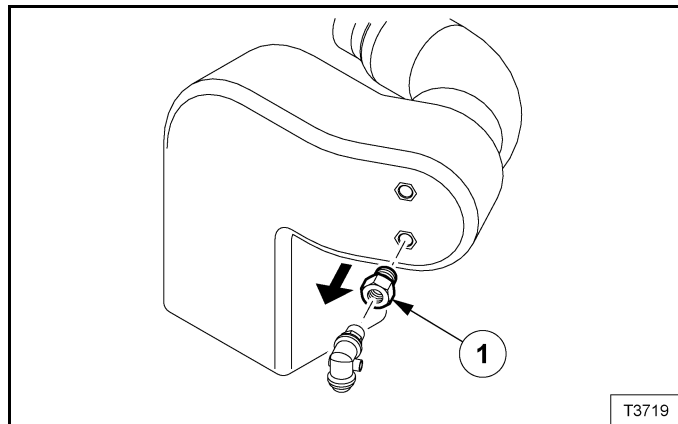


Install orifice (CCN 46635922) (Item 1) **[Figure 4]** from the service kit.

CAUTION

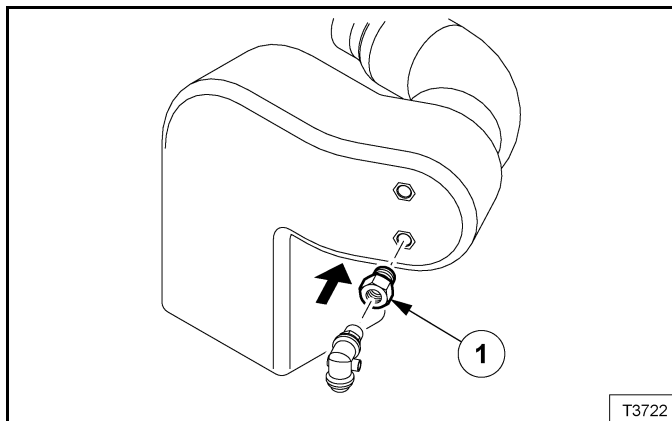
Take care when removing the existing adaptor / installing the new adaptor. The threaded insert is bonded to the plastic housing. Excessive force will break this bond.

Figure 5



Disconnect and remove existing adaptor (CCN 92863810) (Item 1) **[Figure 5]** at the air intake pipe and discard.

Figure 6



Install orifice (CCN 46635921) (Item 1) **[Figure 6]** from the service kit.

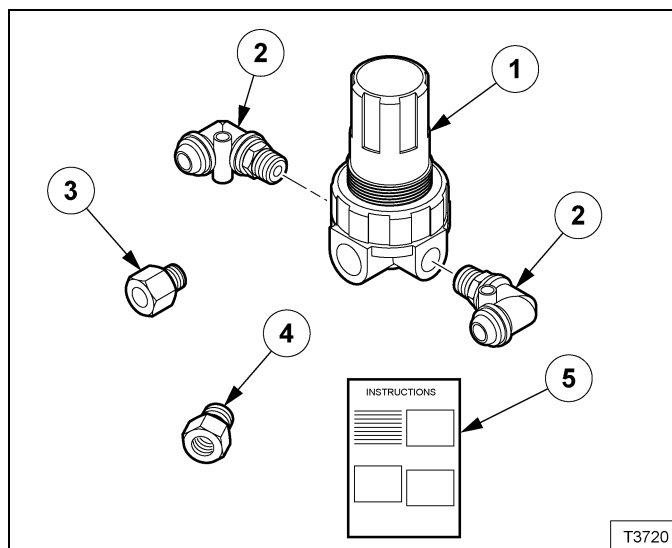
Note

- Ensure that there are no kinks or damage to the hoses.

Return the unit to service and operate to ensure correct operation (refer to the Operation & Maintenance Manual for the correct procedure).

CUSTOMER PACKING LIST

(Kit #46635940) Service Kit of Hoerbiger Regulator



REF.	PART NO.	DESCRIPTION	QTY.
1	46635923	REGULATOR	1
2	54403209	ELBOW 1/8" BSPT X 6MM	2
3	46635922	ADAPTOR, ORIFICE 9/16" UNF X 1/8" BSPP	1
4	46635921	ADAPTOR, ORIFICE 1/4" UNF X 1/8" BSPP	1
5	46642299	INSTRUCTIONS	1