



Doosan Infracore
Construction Equipment

Picture Reference Guide for "Technical Investigation Report"

Overview

1. Application / Work Site
2. Machine/Attachment
3. Machine/Attachment ID plate
4. Machine Hour-meter
5. Affected Component
6. ID plate of affected Component (if applicable)
7. Failure Area
8. Close-up of the Failure Area

Examples: [Wheel Loader \(WL\)](#)
[Attachment \(ATT\)](#)
[Compressor \(COMP\)](#)
[Generator \(GEN\)](#)

Digital Picture Collecting Guideline



Digital Picture Collecting Guideline

1. Application / Work Site
2. Machine/Attachment
3. Machine/Attachment ID plate
4. Machine Hour-meter
5. Affected Component
6. ID plate of Affected Component (if applicable)
7. Failure Area
8. Close-up of the Failure Area

Use **low resolution** (for all pictures, except failure area).

When making pictures of failure area, use Macro mode or Close-up (if photo camera is equipped with this option).

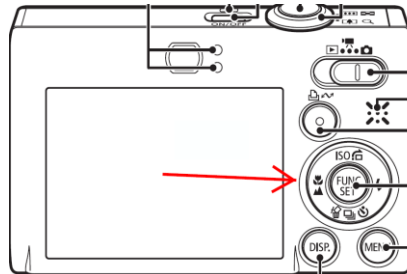


Picture Resolution

Use **low resolution** for all pictures, except failure area.



When making pictures of failure area, use Macro mode or Close-up (if photo camera is equipped with this option).



When applicable, include pictures of ground engaging tools: tips, bits, teeth, cutting edges...



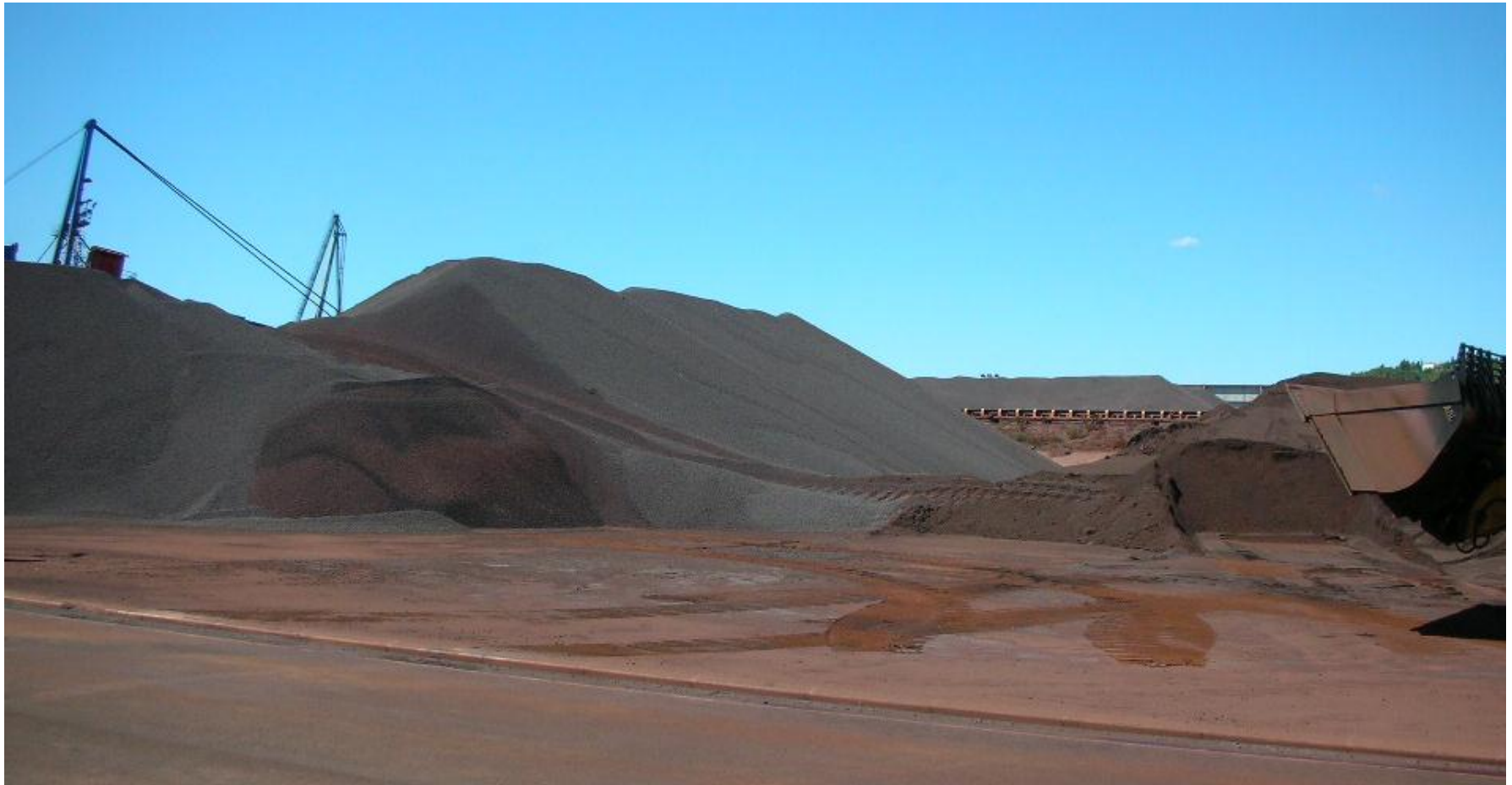


Wheel Loader (WL)



[\(back\)](#)

1. Application / Work site



Low resolution picture

2. Machine/Attachment

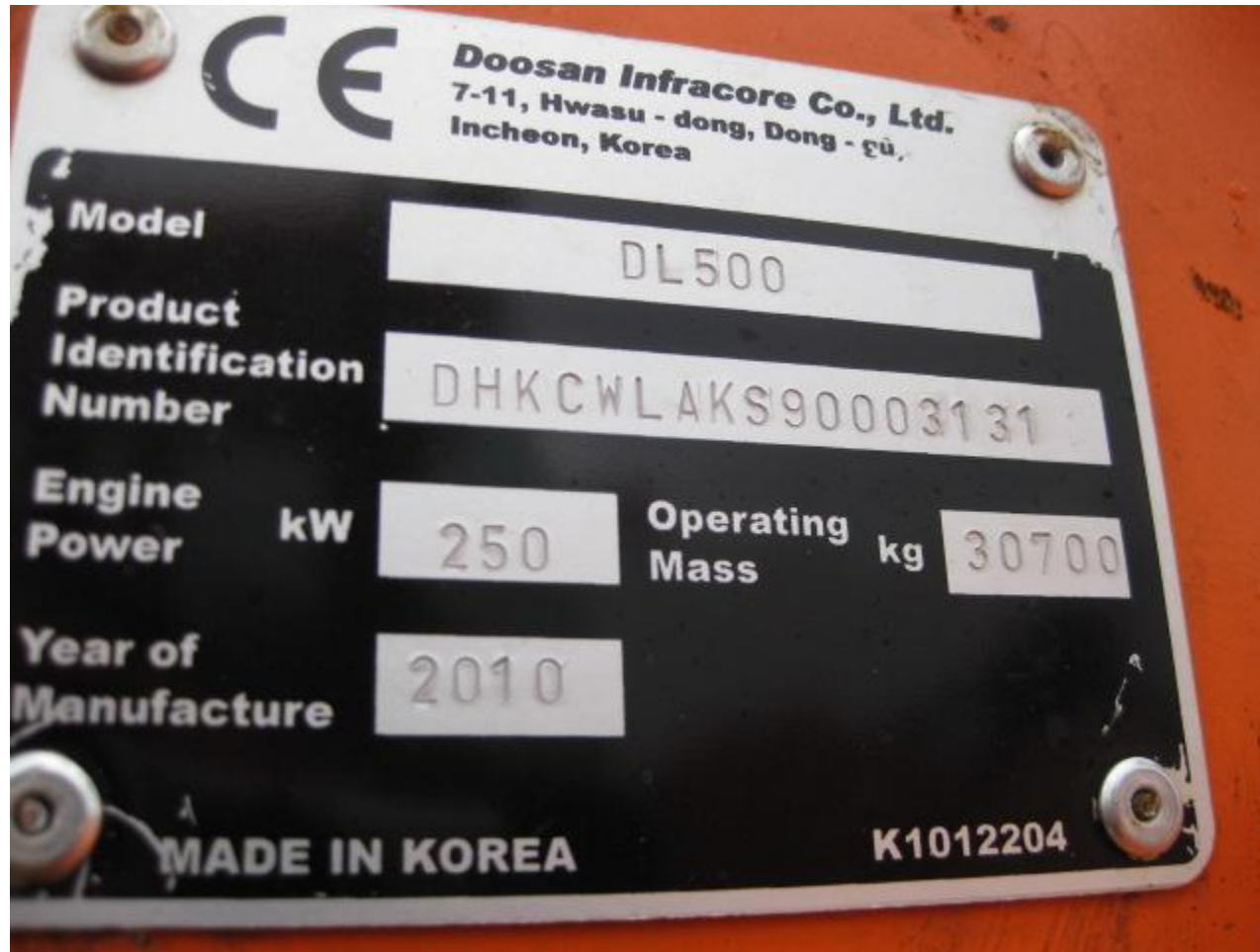


Low resolution picture



Doosan Infracore
Construction Equipment

3. Machine/Attachment ID plate



Low resolution picture

4. Machine Hour-meter



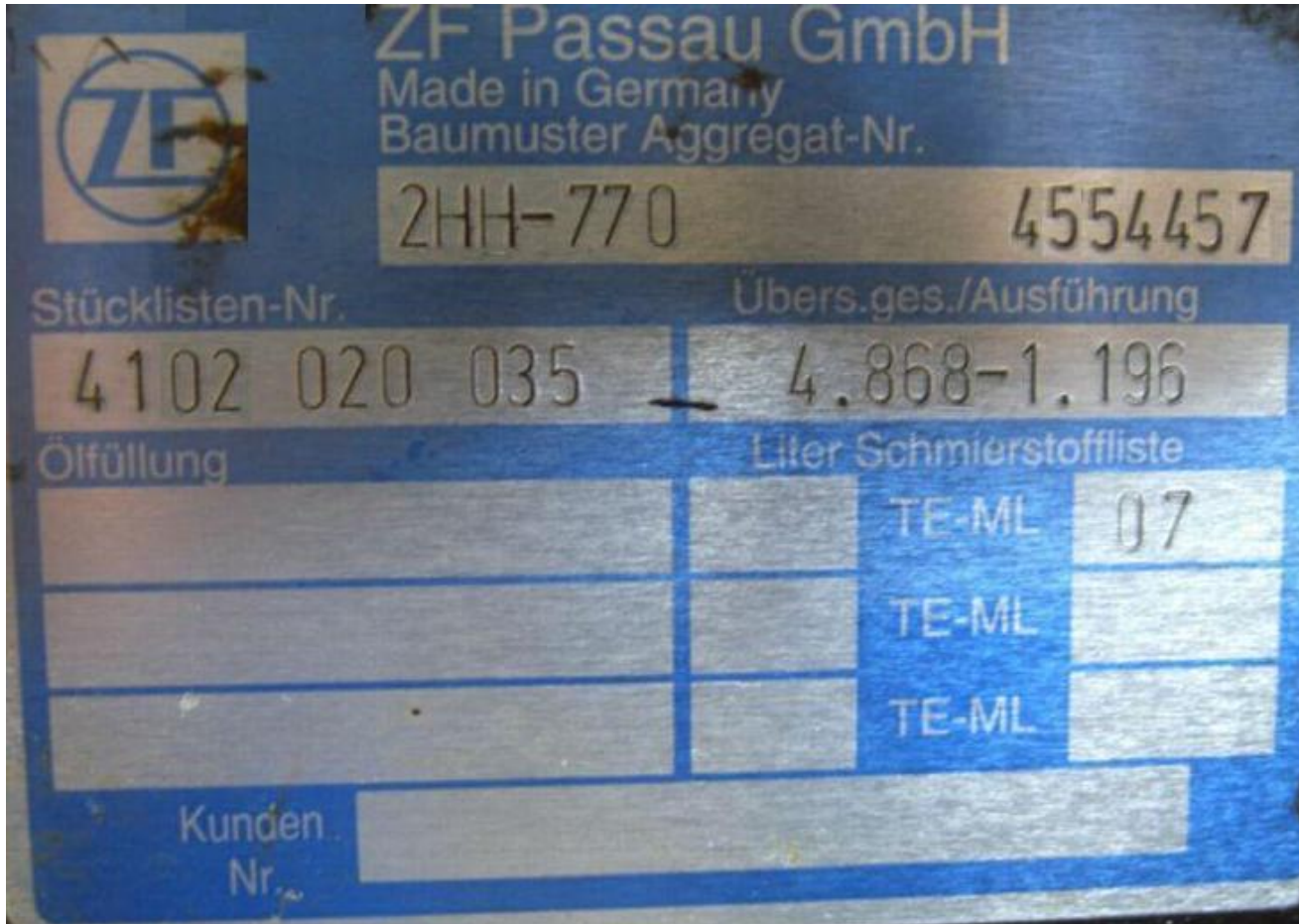
Low resolution picture

5. Affected Component



Low resolution picture

6. ID plate of affected Component (if applicable)



The image shows a blue metal ID plate for a ZF component. It features the ZF logo, company name, and various identification numbers. The plate is divided into sections for different types of information, including part numbers, oil fill, and customer details.

ZF Passau GmbH	
Made in Germany	
Baumuster Aggregat-Nr.	
2HH-770	4554457
Stücklisten-Nr.	Übers.ges./Ausführung
4102 020 035	4.868-1.196
Ölfüllung	Liter Schmierstoffliste
	TE-ML 07
	TE-ML
	TE-ML
Kunden Nr.	

Low resolution picture

7. Failure Area



Low resolution picture

8. Close-up of the Failure Area



High resolution picture



Attachment (ATT)



[\(back\)](#)

1. Application / Work site



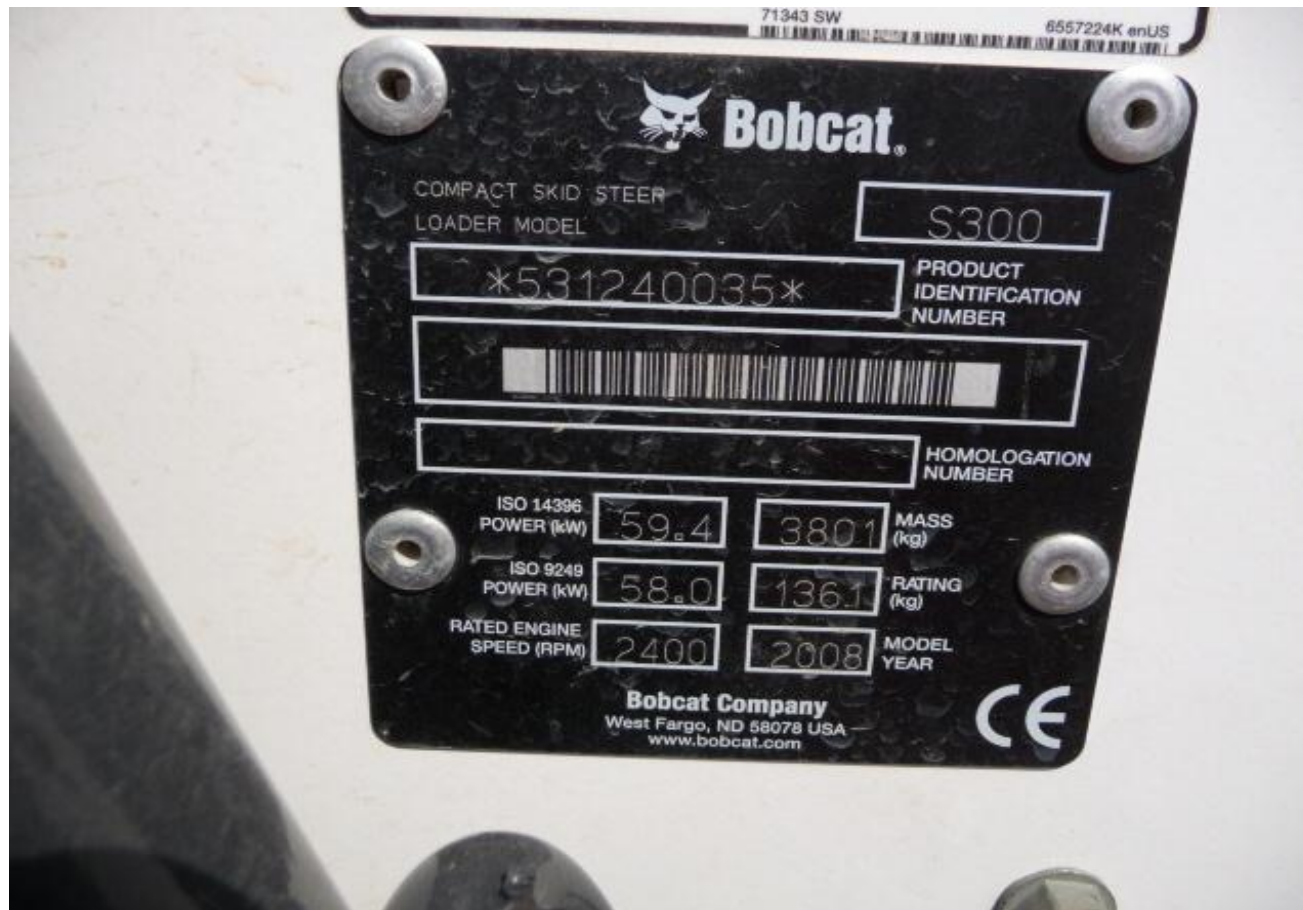
Low resolution picture

2. Machine/Attachment



Low resolution picture

3. Machine/Attachment ID plate



Low resolution picture

4. Machine Hour-meter



Low resolution picture

5. Affected Component



Low resolution picture

6. ID plate of affected Component (if applicable)



Low resolution picture

7. Failure Area



Low resolution picture

8. Close-up of the Failure Area



High resolution picture



Compressor (COMP)



[\(back\)](#)

1. Application / Work site



Low resolution picture



Low resolution picture



Low resolution picture

2. Machine/Attachment



Low resolution picture

3. Machine/Attachment ID plate

USA Produced Machines



Low resolution picture

EMEA Produced Machines



Low resolution picture

4. Machine Hour-meter



Low resolution picture

5. Affected Component



Low resolution picture

6. ID plate of affected Component (if applicable)



Low resolution picture

7. Failure Area



Low resolution picture

8. Close-up of the Failure Area



High resolution picture



Generator (GEN)



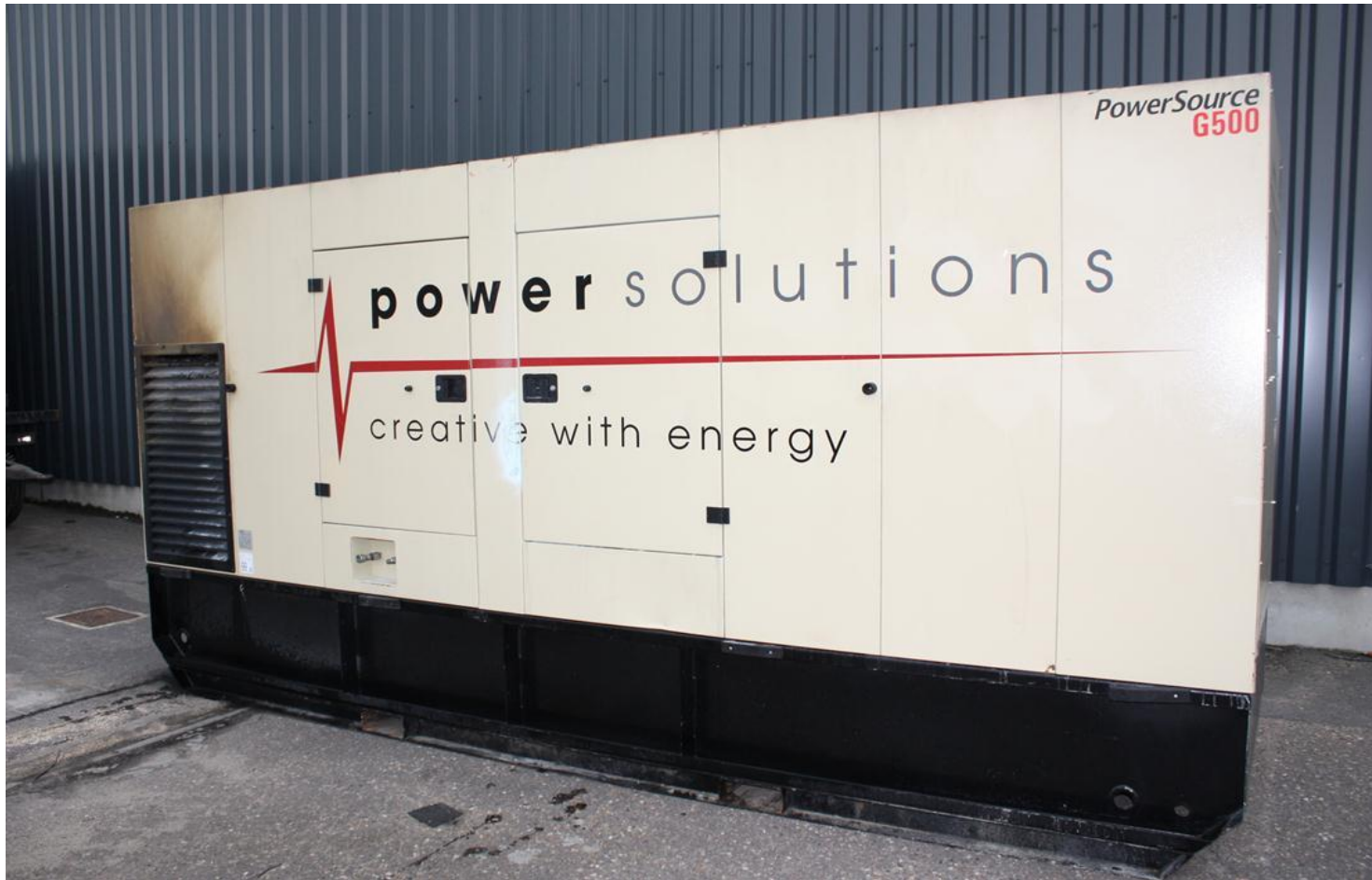
[\(back\)](#)

1. Application / Work site



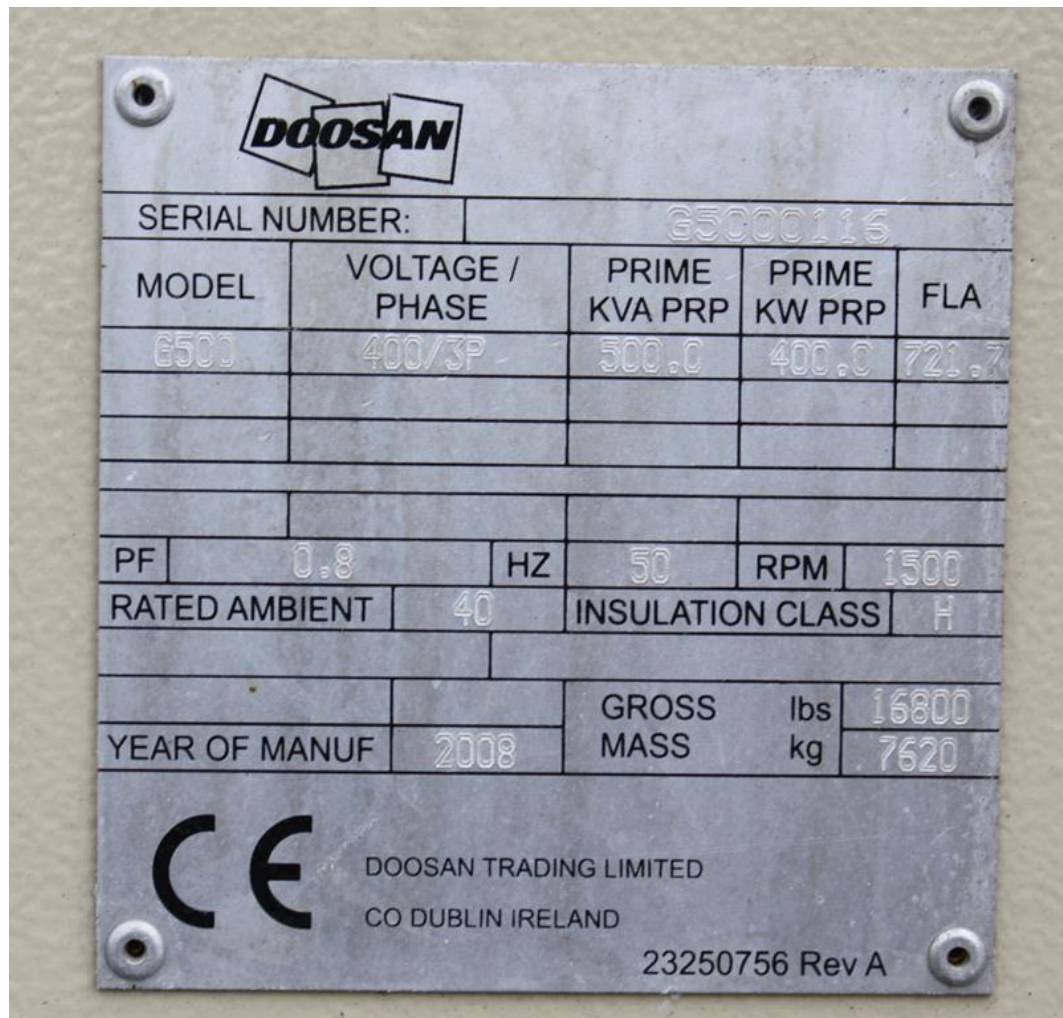
Low resolution picture

2. Machine/Attachment



Low resolution picture

3. Machine/Attachment ID plate



Low resolution picture

4. Machine Hour-meter



Low resolution picture

5. Affected Component



Low resolution picture



Low resolution picture

6. ID plate of affected Component (if applicable)



Low resolution picture

7. Failure Area



Low resolution picture

8. Close-up of the Failure Area



High resolution picture



High resolution picture

