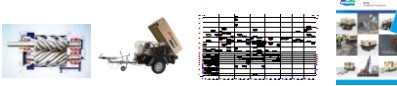




Doosan Infracore

Doosan Infracore - Portable Power

Portable Compressors EMEA



Date: December 2009
Department: Marketing
Alex Persyn



Product Range

Model	Capacity m ³ /min	Pressure bar
7/20	2.0	7.0



or

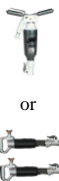


Kubota D1005
Engine



Product Range

Models	Capacity m ³ /min (cfm)	Pressure bar (psig)
7/26E	2.5 (90)	7.0 (100)
7/31E	3.0 (105)	7.0 (100)



or



or



Product Range

Models	Capacity m³/min (cfm)	Pressure bar (psig)
7/41	4.0 (140)	7.0 (100)



or



Product Range

Model	Capacity m³/min (cfm)	Pressure bar (psig)
7/51	5.0 (175)	7.0 (100)



or



Product Range



Models	Capacity m³/min (cfm)	Pressure bar (psig)
7/71	7.1 (250)	7.0 (100)
12/56	5.6 (200)	12.0 (175)



Product Range

7/120 Platform



Models	Capacity m³/min (cfm)	Pressure bar (psig)
7/120	12.0 (425)	7.0 (100)
9/110	10.6 (375)	8.6 (125)
10/105	10.3 (365)	10.3 (150)
14/85	8.5 (300)	13.8 (200)



Product Range

Models	Capacity m³/min (cfm)	Pressure bar (psig)
7/170	17.0 (600)	7.0 (100)
10/125	12.7 (450)	10.3 (150)
14/115	1.3 (400)	14.0 (200)



7/170 Platform



Product Range



Model	Capacity m³/min (cfm)	Pressure bar (psig)
9/235HA	23.4 (825)	8.6 (125)



Product Range: NEW 12/150

- Pressure: 12bar (175psi)
- Volume: 14.6 m³/min (515cfm)
- Engine: Cummins QSB 6.7 (157kW)
- Weight: Max 3000kg (incl.options)
- Running gear: Single axle
- Applications: Soil investigation
Abrasive shot blasting
Rock drilling
Fibre optic cabling,...



Bunded base & Central drains standard!



Product Range

Models	Capacity m³/min (cfm)	Pressure bar (psig)
9/270	27.0 (950)	8.6 (125)
9/300	29.2 (1060)	8.6 (125)
12/235	23.1 (825)	12.1 (175)
17/235	23.1 (825)	17.2 (250)
21/215	20.9 (760)	20.7 (300)



Product range

Models	Capacity m³/min (cfm)	Pressure bar (psig)
10/370	36.8 (1300)	10.3 (150)
10/455	45.3 (1600)	10.3 (150)
25/300	30.3 (1070)	25 (365)
25/330	33.1 (1170)	25 (365)



Factory Fitted Option



Variable height running gear, and lights

Feature
Comprehensive running gear configuration with EC lighting requirements on all road tow running gear 7/20 through to 7/170.

Benefit
Gives towing height flexibility.

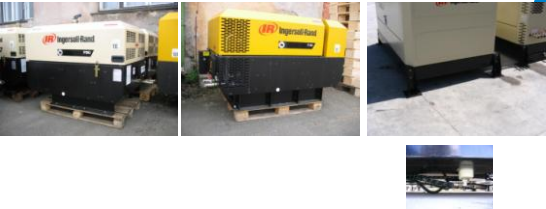


Dorman Infraco
Portable Power



Ingersoll Rand

Factory Fitted Option



Less Running Gear - Shipping support / Permanent mount

Feature
Metal support replacing the running gear.

Benefit
Typically ordered when the machine is to be truck or concrete base mounted.



Dorman Infraco
Portable Power



Ingersoll Rand

Factory Fitted Option



Less Running Gear - Shipping support / Permanent mount

Feature
Metal support or "feet" replacing the running gear.

Benefit
Typically ordered when the machine is to be truck or concrete base mounted.



Dorman Infraco
Portable Power



Ingersoll Rand

Factory Fitted Option



Single colour paint and Laser Etching option for canopy

- Feature**
- Upper enclosure to customer colour (RAL code required)
 - Laser etching of the rear panel (white or black background)

Benefit
Allows customer specific livery and reduces the risk of theft.



Factory Fitted Option



Jockey wheel

- Feature**
- All units have a jockey wheel as standard. (Except 7/20, not required on 9/270 through to 21/215).

Benefit
Helps on-site maneuverability.



Factory Fitted Option



Lubricator

- Feature**
- An in built lubricator option helps to oil downstream pneumatic tools.

Benefit
Increases tool reliability and life.



Factory Fitted Option



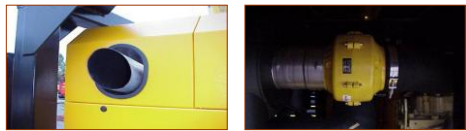
Wheel nut checkpoints

Feature
The Checkpoints are fixed to the wheel nuts by gripping the six corners of the hexagon of the wheel nut. When the wheel is being fitted out the Checkpoint pointers should be aligned and set in a recognisable pattern.

Benefit
Safety precaution. Should a wheel nut loosen off, the Checkpoint has no option but to move with the nut and so break the recognizable pattern that was set, thus indicating the wheel nut has begun to rotate and therefore to loosen.



Factory Fitted Option



Spark arrester and Overspeed valve ("Refinery Kit")

Feature
All spark arrestors meet BS6690 and are factory approved.
Overspeed valve throttles the air intake to the engine should it begin to over-speed due to volatile vapours being present in the atmosphere.

Benefit
Helps reduce the risk of exhaust sparks.
Increased engine reliability.



Factory Fitted Option



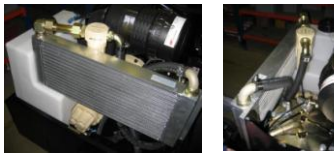
Light weight compressor mounted hose reel

Feature
Allows the safe and compact storage of 20/25m of 3/4" hose.
Available on certain models only.

Benefit
Longer hose life and reliability and increases operator convenience.



Factory Fitted Option



Aftercooler and water separator

Air Quality from compressor in standard condition

Pressurised air at approx. ambient temp plus 40 degrees C.
Intake filtered to 30 micron particle size.
Output has oil content to max of 10 parts per million by weight.

Air Quality from compressor with Aftercooler and water separator fitted.

Pressurised air at approx. ambient temp plus 15 degrees C.
Water extraction provided by the aftercooler reduces the relative humidity by approx. 50%

This reduces corrosion and the risk of freezing in downstream equipment. Improves tool life and reliability.



Factory Fitted Option

Aftercooler, water separator and filters (or IQ system)

Feature

Pressurised air at approx. ambient temp plus 15 degrees C.
Water extraction provided by the aftercooler reduces the relative humidity by approx. 50%

Filter grade AO provides air to ISO 8573 Class 2 Dirt, 3 Oil.
(Removes particulates greater than 1 micron and reduces oil content to 0.05 ppm @ 21°C)

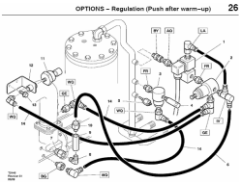
Filter grade AA provides air to ISO 8573 Class 1 Dirt, 2 Oil.
(Removes particulates greater than 0.01 micron and reduces oil content to 0.01 ppm @ 21°C)

Benefit

High quality on-board air from a portable package.



Factory Fitted Option



Feature

NA on 7/20. Standard on 7/26E. Optional on 7/31E, 7/41, and 7/51. Standard on the larger units. Can be added to help starting in very low ambient conditions as an alternative to open tap starting.

Benefit

Allows for quieter starting of the machine in cold weather and reduces engine starter motor wear.



Factory Fitted Option



Security lifting bail

Feature
This feature replaces the standard lifting bail with a hinged design, which allows the lifting bail to fold below the enclosure when not in use, helping security. NOW STANDARD

Benefit
Reduces the risk of theft.



Factory Fitted Option



6kVA Generator

Feature
50Hz 110V (UK) or 230V/400V 6kVA/4.8kW

Benefit
Compressed Air and Electricity available on site

UK specification - sockets
1 x 32 amp, 110V single phase
2 x 16 amp, 110V single phase

European specification- sockets
1 x 32 amp, 400V, 3 phase
2 x 16 amp, 230V single phase



Factory Fitted Option



Wheel chocks

Feature
2 Wheel chocks with attachments to lower enclosure.

Benefit
A legal requirement in Germany, these chocks can help prevent machine movement on a slope.



Factory Fitted Option



Enhanced control panel on 7/26E & 7/31E

- Additional Diagnostic lamps:
- 1. Engine coolant temperature
 - 2. Engine lubrication oil pressure
 - 3. Engine alternator charging
 - 4. AirEnd discharge temp
 - 5. Low fuel



Factory Fitted Option



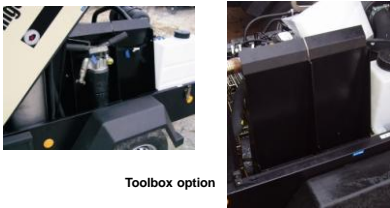
Bunded base

Feature
Containment base catching all fluids in case of leakage
Available on 7/20, 7/26E, 7/31E (and on 7/41 in UK only)

Benefit
Ecological measure.



Factory Fitted Option



Toolbox option

Feature
On board Tool storage space
7/20 not available 7/26E twin boxes 7/31E twin boxes
7/41 twin boxes 7/51 twin boxes 7/71 twin boxes

Benefit
Reduced risk of theft and damage during transport.



Factory Fitted Option



Road Lights for fixed height running gear

Feature
This option fits road lights to the fixed height running gear version
(Remark: Roadlights are standard with an adjustable height running gear).

Benefit
Convenience for the safe road tow of the air compressor.



Factory Fitted Option



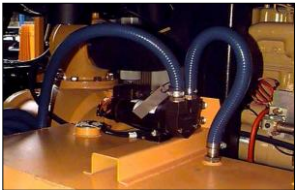
Dual pressure switch

Feature
This option is available on all machines whose operating pressure is >7bar. This feature allows the operator to move from the rated operating pressure to a lower pre-set pressure. Usually factory set at 7bar, except on all high pressure machines (17, 21 or 25bar) where the minimum pressure is set at 15bar.

Benefit
Higher flexibility. Ideal for drilling applications and cable laying applications where a lower pressure is needed at the beginning of a job.



Factory Fitted Option



Fuel transfer pump

Feature
Optional available on the Large units (9/270 through to 21/215)
A 24V DC fuel transfer pump capable of 50 litres / minute flow rate.

Benefit
Ease of on site filling and considerable operator time saving. Practical and simple.



Factory Fitted Option



Hose rack

Feature
These 4 brackets are mounted to the corner of the Large units (9/270 - 21/215). They are designed to help hold the bull hose off the ground in order to reduce the risk of damage from surrounding equipment.

Benefit
Longer hose life.



Factory Fitted Option



Low fuel warning beacon
Feature
Gives 10 minutes advanced warning of low fuel shut down.

Benefit
Better safety and smoother operation.



External spotlights
Feature
Two roof mounted spotlights boost visibility in low light conditions. Particularly useful at the beginning and end of shifts in the winter months.

Benefit
Increased operator productivity.

Internal service lights
Feature
Three 30W fluorescent tubes provide internal lighting. Ideal for maintenance in low light conditions or applications where machines work at night.

Benefit
Increased operator productivity.



Applications

- Use includes:
- Powering hand tools
 - Mineral and rock drilling
 - Oil and gas exploration
 - Water well drilling
 - Abrasive blasting
 - Shotcreting
 - Paint spraying
 - Maintenance work
 - Fibre optics and cable laying
 - Pipeline cleaning and testing
 - Industrial standby / temporary duties



Applications



Asphalt work,
7/51 powering
a medium duty
Paving Breaker

DOSSAN Doosan Infracore
Portable Power

IR Ingersoll Rand

Applications



Abrasive blasting, 12/56 (out of shot)

DOSSAN Doosan Infracore
Portable Power

IR Ingersoll Rand

Applications



Construction, two 7/71's used in foundation work

DOSSAN Doosan Infracore
Portable Power

IR Ingersoll Rand

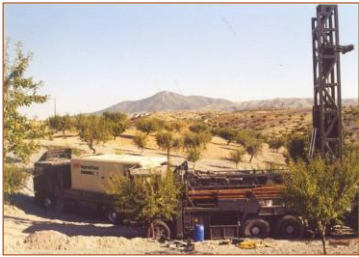
Applications



7/41 powering breaker in pavement renewal work



Applications



This unit is a 25/300 based in Murcia, Southern Spain.
("El Virtudes" – water well drilling company)



Applications

- Quarries and DHD drilling where they use pneumatic drills
- Geo technical drilling (soil investigation, anchoring, piling,...)
- Aggressive blasting (grit, dry ice,...)
- Blasthole drilling
- Horizontal drilling (water pipes, fibre optics,...)



Applications



10/425 unit 'oil free'

Used as standby
should system air
supply fail or fall
below set
parameters

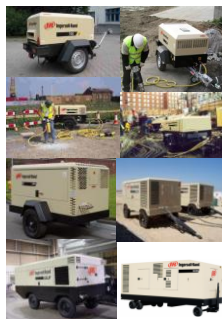
INGERSOLL RAND
Demand Inflexion
Portable Power

IR Ingersoll Rand

Ingersoll Rand - Portable Power Product Range

➤ Twelve different platforms, twenty six different models

- 7/20
- 7/26E – 7/31E
- 7/41
- 7/51
- 7/71 - 12/56
- 7/120 - 10/105 - 9/110 - 14/85
- 7/170 - 10/125 - 14/115
- 12/150
- 9/235 (only in High Ambient version – Not CE)
- 9/270 - 9/300 - 12/235 - 17/235 - 21/215
- 10/370 - 10/455 - 25/300 - 25/330
- 10/425 (Oil-free)



INGERSOLL RAND
Demand Inflexion
Portable Power

IR Ingersoll Rand
